

## 1. Introduction

Every ten years a census is carried out in England and Wales to produce an accurate estimate of the population. The 2011 Census took place on 27 March 2011.

The Office for National Statistics (ONS) is releasing data from the census in several phases. On 23 November 2012 the first release of small area statistics were published. Data is presented for Output Areas, Super Output Areas and wards in England and Wales as well as higher geographies. This note summarises the main findings of this data for the parishes in South Gloucestershire.

These parish level figures have been created by the council by aggregating the relevant Census Output Area data. A map illustrating parish boundaries in South Gloucestershire is set out at Appendix A.

## 2. Population and household estimates

The main findings of this release are summarised in Table 1. In addition population data is available for five year age band and sex. These new estimates replace all small area estimates previously published by ONS. This data is also available for Wards, Lower Super Output Areas and Output Areas.

## 3. Population

The total usual resident population<sup>1</sup> of South Gloucestershire is 262,767. The average population size for parishes in South Gloucestershire is 4,844 people, although the number of residents varies considerably between parishes; at 21,603 usual residents Yate has the largest population and at 113 Little Sodbury has the smallest.

## 4. Households

In South Gloucestershire, the total number of households with at least one usual resident (i.e. occupied households) was 107,538 on Census day. Yate (8,855), Bradley Stoke (8,434) and Oldland (6,390) were the parishes with the largest number of households. Hill (42), Little Sodbury (51) and Tortworth (53) were the parishes with the fewest.

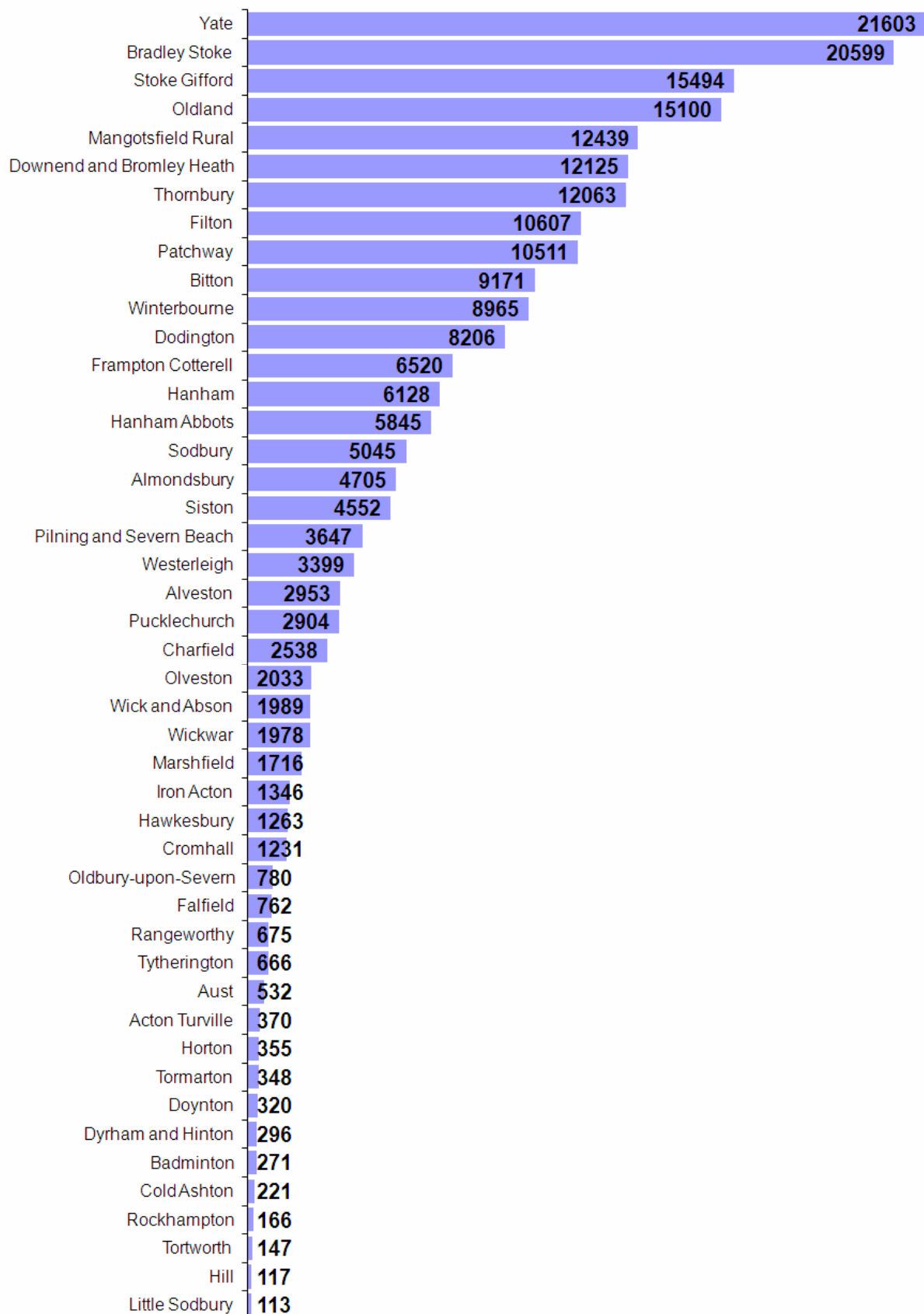
**Table 1. 2011 Census Summary Statistics for parishes in South Gloucestershire**

Parish Code	Parish Name	All usual residents (Persons)	Household residents (Persons)	Communal establishment residents (Persons)	Population density (persons per hectare)*	Households with at least one usual resident	Average household size (persons per household)
E04001038	Acton Turville	370	370	0	0.9	155	2.4
E04001039	Almondsbury	4705	4660	45	1.6	1812	2.6
E04001040	Alveston	2953	2931	22	2.7	1292	2.3
E04001041	Aust	532	532	0	0.2	195	2.7
E04001042	Badminton	271	271	0	0.4	120	2.3
E04001043	Bitton	9171	9106	65	6.2	3694	2.5
E04001044	Bradley Stoke	20599	20581	18	45.5	8434	2.4
E04001045	Charfield	2538	2537	1	3.8	974	2.6
E04001046	Cold Ashton	221	221	0	0.2	96	2.3
E04001047	Cromhall	1231	729	502	1.3	279	2.6
E04001048	Dodington	8206	8188	18	5.0	3072	2.7
E04001082	Downend and Bromley Heath	12125	12037	88	41.2	5044	2.4
E04001049	Doynton	320	314	6	0.4	133	2.4
E04001050	Dyrham and Hinton	296	296	0	0.2	121	2.4
E04001051	Falfield	762	540	222	0.8	207	2.6
E04001052	Filton	10607	10531	76	26.1	4514	2.3
E04001053	Frampton Cotterell	6520	6495	25	7.7	2577	2.5
E04001083	Hanham	6128	6087	41	39.1	2630	2.3
E04001054	Hanham Abbots	5845	5785	60	13.7	2350	2.5
E04001055	Hawkesbury	1263	1233	30	0.5	491	2.5
E04001056	Hill	117	117	0	0.1	42	2.8
E04001057	Horton	355	355	0	0.2	142	2.5
E04001058	Iron Acton	1346	1332	14	1.0	532	2.5
E04001059	Little Sodbury	113	113	0	0.3	51	2.2
E04001060	Mangotsfield Rural	12439	12430	9	29.0	4921	2.5
E04001061	Marshfield	1716	1715	1	0.7	719	2.4
E04001062	Oldbury-upon-Severn	780	780	0	0.2	310	2.5
E04001063	Oldland	15100	15028	72	42.0	6390	2.4
E04001064	Olveston	2033	1988	45	1.2	823	2.4
E04001065	Patchway	10511	10494	17	24.2	4514	2.3
E04001066	Pilning and Severn Beach	3647	3639	8	1.2	1507	2.4
E04001067	Pucklechurch	2904	2784	120	3.2	1153	2.4
E04001068	Rangeworthy	675	673	2	1.0	254	2.6
E04001069	Rockhampton	166	166	0	0.4	64	2.6
E04001070	Siston	4552	4470	82	5.6	1852	2.4
E04001071	Sodbury	5045	4969	76	3.2	2225	2.2
E04001072	Stoke Gifford	15494	13677	1817	22.1	5679	2.4
E04001073	Thornbury	12063	11915	148	7.1	5095	2.3
E04001074	Tormarton	348	346	2	0.2	152	2.3
E04001075	Tortworth	147	145	2	0.2	53	2.7
E04001076	Tytherington	666	666	0	0.7	256	2.6
	<i>Unparished area</i>	<b>39953</b>	<b>39548</b>	<b>405</b>	<b>54.2</b>	<b>17157</b>	<b>2.3</b>
E04001077	Westerleigh	3399	3367	32	2.2	1423	2.4
E04001078	Wick and Abson	1989	1989	0	2.4	803	2.5
E04001079	Wickwar	1978	1926	52	1.4	709	2.7
E04001080	Winterbourne	8965	8761	204	7.2	3667	2.4
E04001081	Yate	21603	21370	233	25.1	8855	2.4
<b>South Gloucestershire</b>		<b>262767</b>	<b>258207</b>	<b>4560</b>	<b>5.3</b>	<b>107538</b>	<b>2.4</b>

Source: 2011 Census Table PHP01. Office for National Statistics © Crown Copyright 2012 (calculated by aggregated COA level data).

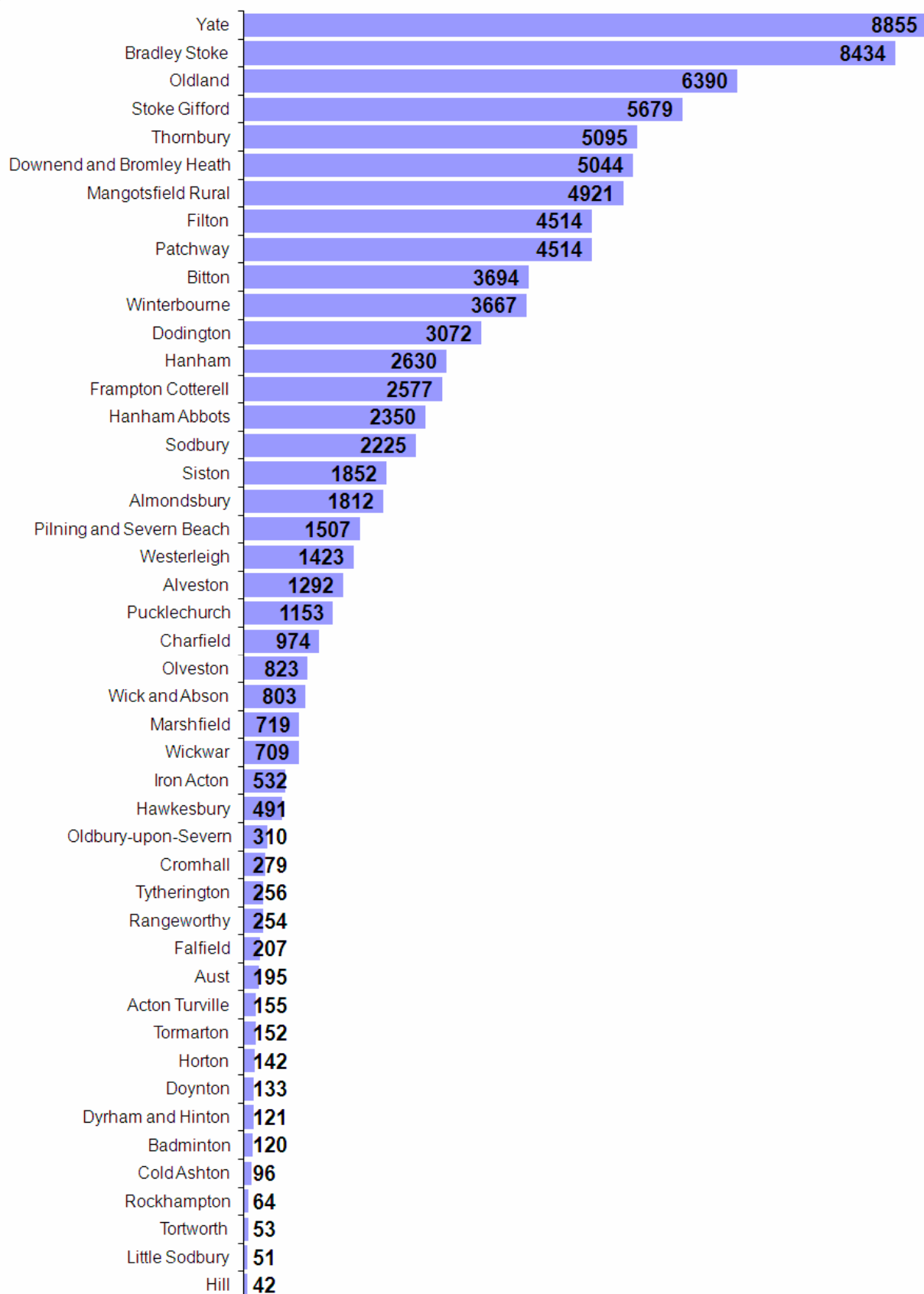
\* Parish areas calculated using GIS - Cartesian measure.

## Persons (all usual residents)



Source: Census 2011 Table PHP01. Office for National Statistics © Crown Copyright 2012 (calculated by aggregating COA level data).

### Households (at least one usual resident)



Source: Census 2011 Table PHP01. Office for National Statistics © Crown Copyright 2012 (calculated by aggregating COA level data).

## 5. People living in households and communal establishments

Around 98% of South Gloucestershire's population live in households<sup>ii</sup>, the remainder live in Communal Establishments<sup>iii</sup>.

In most parishes, over 98% of the population live in households. Parishes with particularly high communal establishment populations are: Cromhall (41%), Falfield (29%), Stoke Gifford (12%) and Pucklechurch (4%). These high proportions can be explained by HMP Layhill (Cromhall), HMP Eastwood Park (Falfield), student villages at UWE Frenchay Campus (Stoke Gifford Parish) and HMP& YOI Ashfield (Pucklechurch).

## 6. Population density

Population density (the number of people per hectare) is highest in the urban areas of the district and lowest in the rural areas. At 45.5 people per hectare (pph), Bradley Stoke is the most densely populated parish and Hill has the lowest population density (0.1 pph). At 54.2 pph the unparished area of the district has the highest population density.

## 7. Average household size

The average household size in South Gloucestershire is 2.4 persons per household. At 2.8 persons per household, Hill is the parish with the largest average household size and Little Sodbury has the smallest (2.2 persons per household).

## 8. Population age structure

The broad age structure of each parish is illustrated overleaf.

**Children (age 0-14)<sup>iv</sup>:** In South Gloucestershire 46,391 people (17.7% of the total population) are children. The following parishes have the highest proportion of children:

- Hill (23.9%) – although this only accounts for 28 individuals
- Mangotsfield Rural (22.8%)
- Bradley Stoke (22.1%)

And the following parishes have the lowest proportion of children:

- Cromhall (10.6%)
- Dyrham and Hinton (10.8%)
- Falfield (11.9%)

**Working age population (aged 15-64)<sup>v</sup>:** In South Gloucestershire 171,967 (65.4% of the total population) are of working age. The following parishes have the largest proportion of working age residents:

- Cromhall (77.7%)
- Falfield (77.4%)
- Stoke Gifford (73.7%)

And the following parishes have the lowest proportion of working age residents:

- Alveston (57.7%)
- Winterbourne (58.5%)
- Westerleigh (58.8%)

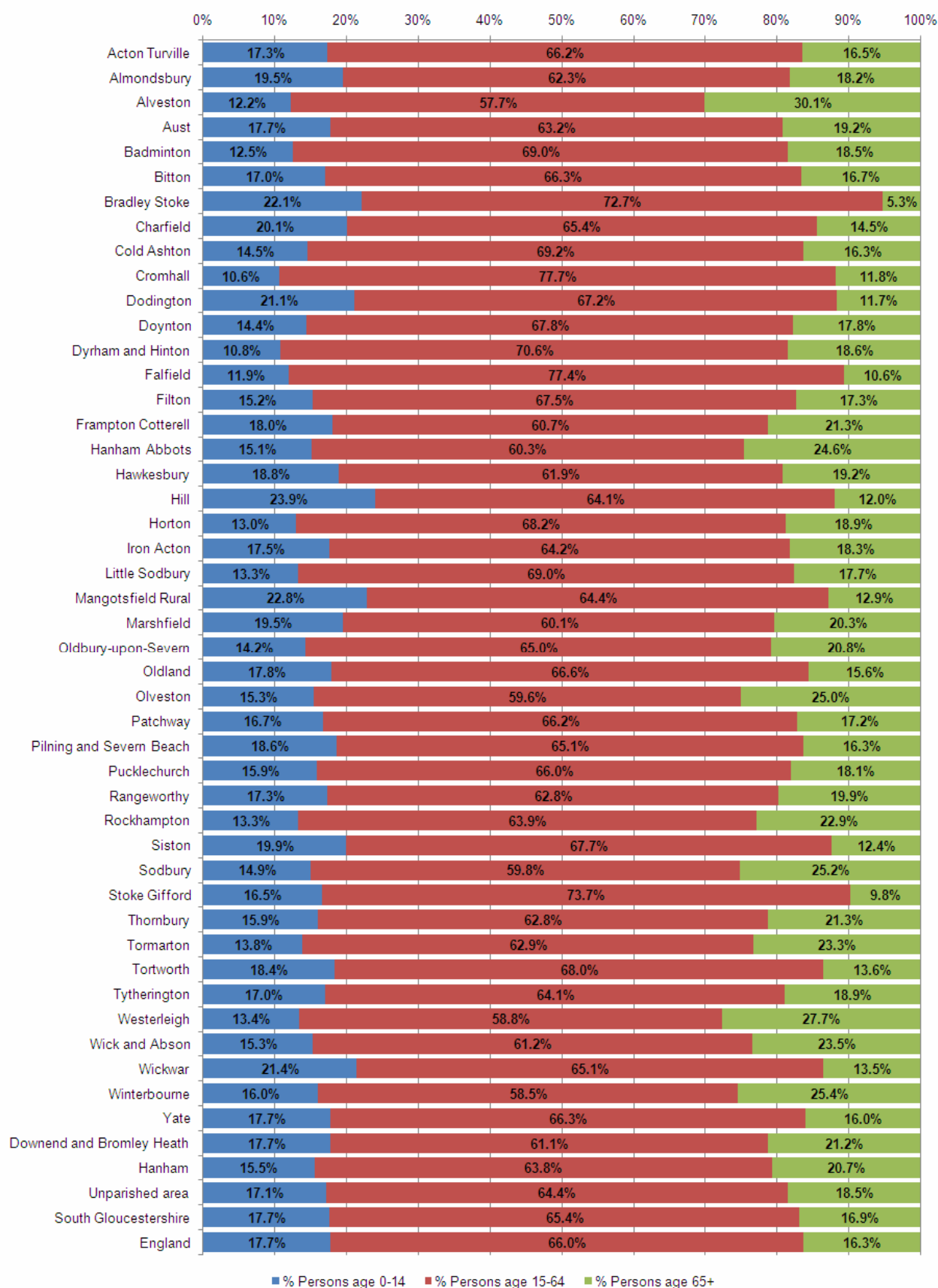
**Older people (aged 65+):** South Gloucestershire 44,409 (16.9% of the total population) are aged 65 or over. The following parishes have the highest proportion of older people:

- Alveston (30.1%)
- Westerleigh (27.7%)
- Winterbourne (25.4%)

In contrast, the following parishes have the lowest proportion of older people:

- Bradley Stoke (5.3%)
- Stoke Gifford (9.8%)
- Falfield (10.6%)

## Broad age structure – South Gloucestershire parishes



Source: 2011 Census - Table PP04. Office for National Statistics © Crown Copyright 2012 (calculated by aggregating COA level data).

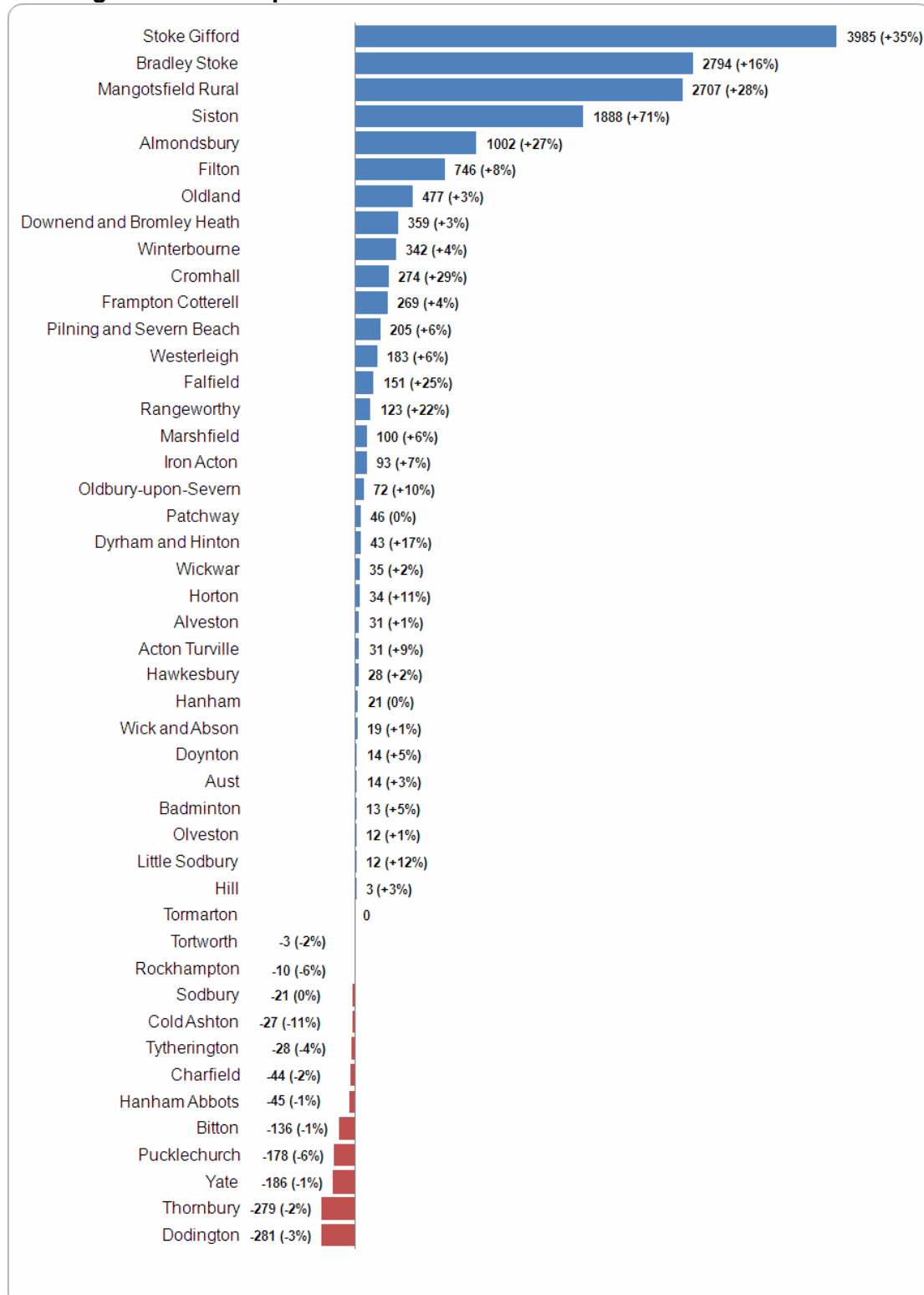
## 9. Population change 2001-2011

Between 2001 and 2011 the total population of the district increased by 17,126 people (a 7% rise).

Change has not been uniform across the district, the biggest increases have been experienced in Stoke Gifford (3,985 +35%), Bradley Stoke (2,794, +16%), Mangotsfield Rural (2,707, +28%) and Siston (1,888, +71%). These parishes have seen high levels of residential development over the past decade.

In contrast, Dodington (-281, -3%), Thornbury (-279, -2%) and Yate (-186, -1%) are the parishes which have, over the past decade, experienced largest population decreases.

### Population change 2001-2011 – parishes in South Gloucestershire



## **10. Further data releases**

More census data will be published in a series of releases throughout 2013. These releases will include more detail (such as ethnicity, car availability, health and qualifications) at various geographical levels. Further analysis and areas profiles for South Gloucestershire will be produced and made available via the council website.

## **11. Further information**

Further information about the 2011 Census can be found on the Office for National Statistics website.

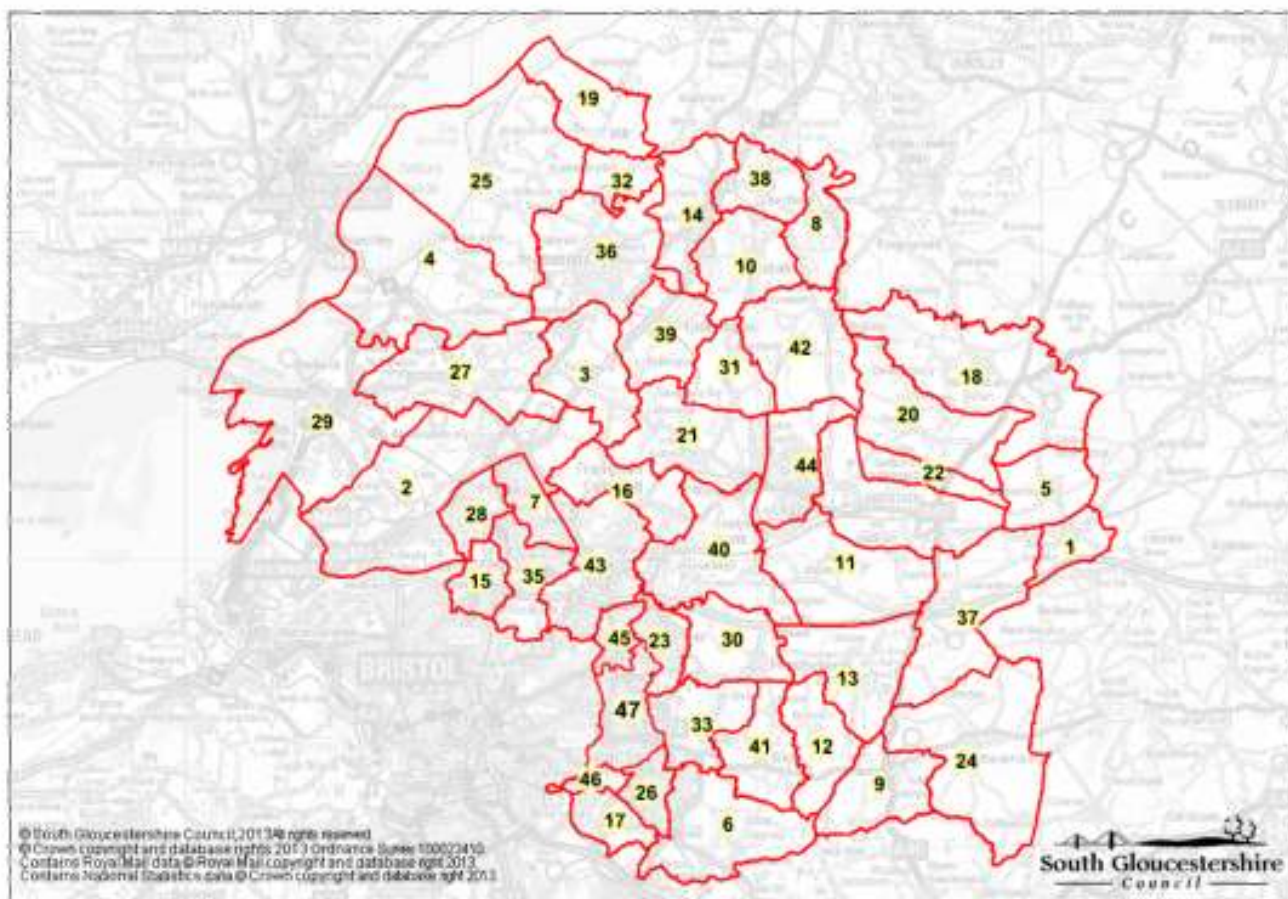
Alternatively contact the Corporate Research and Consultation Team: 01454 863990.

Email: [andy.cornelius@southglos.gov.uk](mailto:andy.cornelius@southglos.gov.uk)

Andy Cornelius  
Dec. 2012



## Appendix A - Map of Parish boundaries



ID	Parish Name
1	Acton Turville
2	Almondsbury
3	Alveston
4	Aust
5	Badminton
6	Bitton
7	Bradley Stoke
8	Charfield
9	Cold Ashton
10	Cromhall
11	Dodington
12	Doynton
13	Dyrham and Hinton
14	Falfield
15	Filton
16	Frampton Cotterell
17	Hanham Abbots
18	Hawkesbury
19	Hill
20	Horton
21	Iron Acton
22	Little Sodbury
23	Mangotsfield Rural
24	Marshfield

ID	Parish Name
25	Oldbury-upon-Severn
26	Oldland
27	Olveston
28	Patchway
29	Pilning and Severn Beach
30	Pucklechurch
31	Rangeworthy
32	Rockhampton
33	Siston
34	Sodbury
35	Stoke Gifford
36	Thornbury
37	Tormarton
38	Tortworth
39	Tytherington
40	Westerleigh
41	Wick and Abson
42	Wickwar
43	Winterbourne
44	Yate
45	Downend and Bromley Heath
46	Hanham
47	Unparished area

---

## FOOTNOTES

<sup>i</sup> **Usually resident population** refers to people who live in England and Wales for 12 months or more. For 2011 Census purposes, a usual resident of the UK is anyone who, on census day, was in the UK for 12 months or more, or had a permanent UK address and was outside the UK and intended to be outside the UK for less than 12 months. Students and school borders are counted at their term-time address.

<sup>ii</sup> **A household is:** One person living alone; or

- A group of people (not necessarily related) living at the same address who share cooking facilities and share a living room or sitting room or dining area

Includes:

- Sheltered accommodation units in an establishment where 50 per cent or more have their own kitchens should be defined as households (irrespective of whether there are other communal facilities)
- All people living in caravans on any type of site that is their usual residence should be treated as households. This will include anyone who has no other usual residence elsewhere in the UK.

A group of short-term migrants living together are not classified as a household, and neither are addresses where only visitors are staying.

<sup>iii</sup> **A communal establishment resident:** is a person living in managed residential accommodation who has lived, or intends to live there for six months or more. Communal establishments include sheltered accommodation units, hotels, guest houses, prisons and all accommodation provided solely for students during term time.

<sup>iv</sup> The usual **definition of children** is all people aged 0-15 years. The 2011 Census first release, however only includes population by five year age band, so we can only refer to 0-14 year olds

<sup>v</sup> The usual **definition of the working age population** is all people aged 16-64 years. The 2011 Census first release, however only includes population by five year age band, so we can only refer to 15-64 year olds