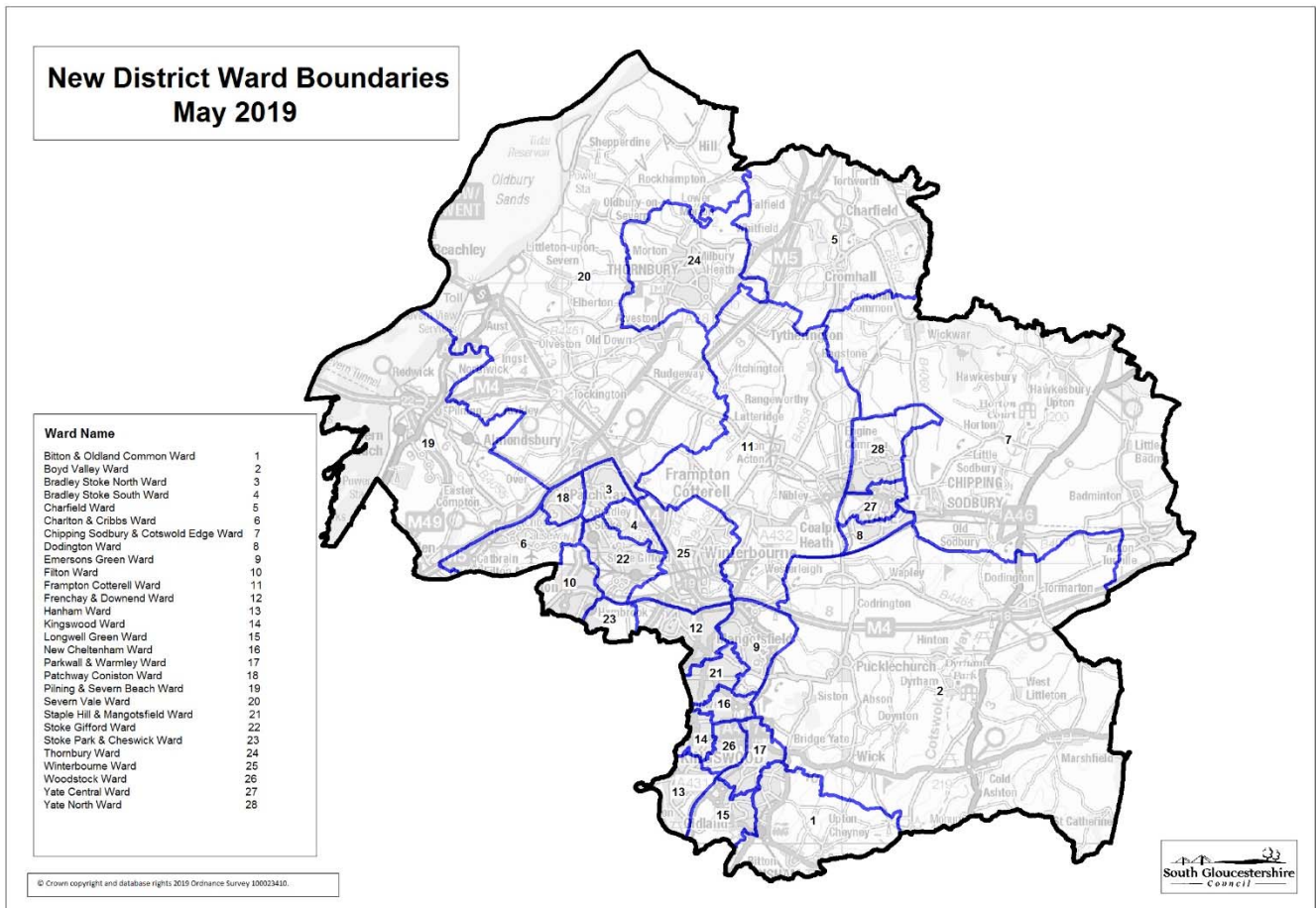


Technical Note: Method for assigning COA level data to 'New' 2019 Administrative Wards in South Gloucestershire.

Background

The May 2019 local elections (2nd May 2019) introduced considerable changes to the administrative ward boundaries in South Gloucestershire:

- The number of wards reduced to 28 from 35
- All 'old' wards were affected with (exception of Charfield and Filton)
- Many of the 'new wards' cover different geographical areas to the 'old wards' but have the same names



The 2011 Census provides the most comprehensive source of statistical data for small areas. Following publication of data from the 2011 Census data, the Corporate Research & Consultation Team produced a standard set of key Census Profiles for wards, Parishes and other areas in South Gloucestershire.

Although now dated, the 2011 Census remains the most comprehensive source of information at small area level.

ONS have confirmed that they will not re-calibrate 2011 Census data to the 'new' wards and it is likely that ONS will not produce any other official statistics (e.g. small area population estimates) for the 'new' wards until 2021 at the earliest.

The Council therefore requires a standard approach for aggregating Census data (and other datasets) available at COA level (small statistical areas) to new wards.

This note sets out the options considered for assigning data at COA level to 'new' (2019) wards and the preferred approach.

Other approaches will be used to assign data at postcode level and LSOA level to 'new wards' – contact the Corporate Research and Consultation Team for further information.

Options considered

There are a wide range of ways that COA level data could be aggregated to create statistics for new wards. Two main options were considered:

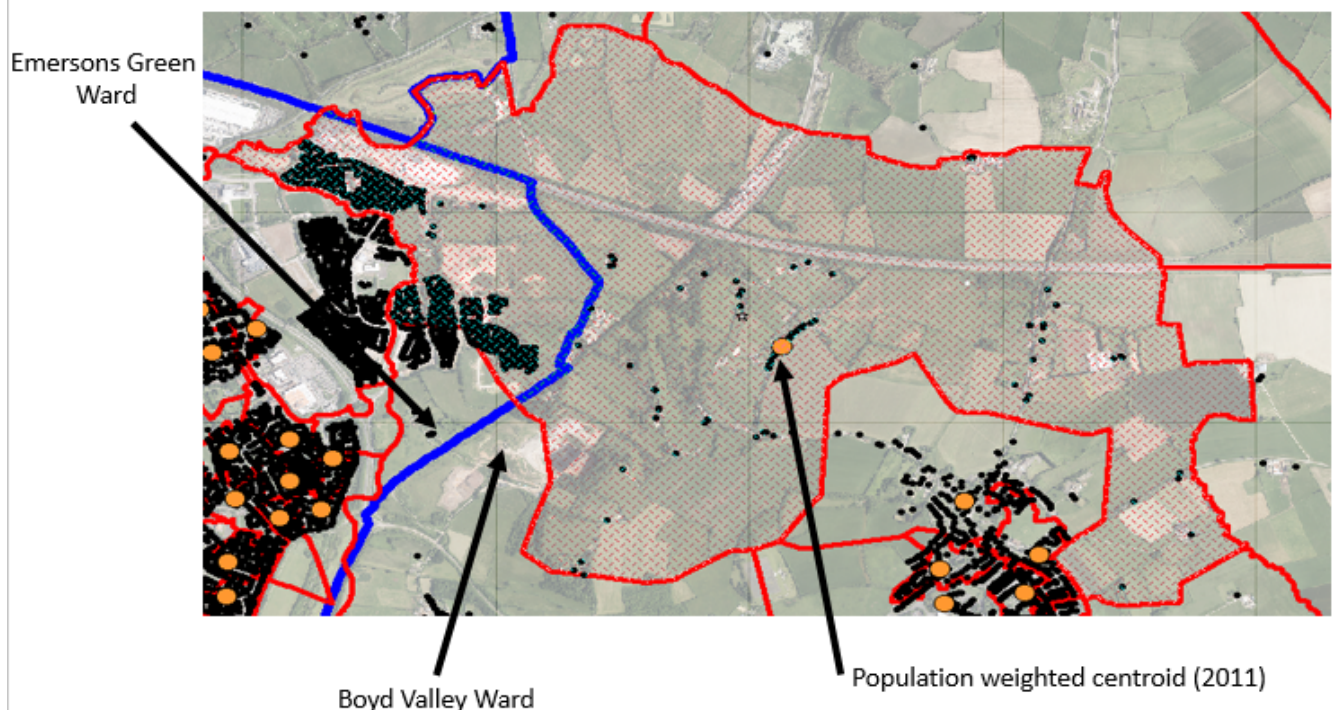
Option 1. Assign COA level data to 'new wards' wards based on the population weighted Centroid (at time of 2011 Census) – this is the standard approach adopted by ONS:

- Benefit: Enable consistency with any future ONS data releases for Ward level data – prior to publication of data for the 2021 Census (publication of 2021 Census data will effectively 'reset' the baseline).
- Risk: Will not account for residential development post 2011 Census – therefore is potentially less accurate.

Option 2. Assign COA level data to 'new wards' based on the distribution of 'current' residential premises (based on Local Land and Gazetteer Objects (LLPG Objects)).

- Benefit: Likely to produce more accurate estimates as COA level data will be apportioned based on current distribution of domestic premises. This is particularly important in wards that have experienced significant housing development post 2011 Census (e.g Emersons Green).
- Risk: The Council's estimates for 'new' wards may, in some cases, differ from 'official' data published by ONS at a later date - as ONS will use the population weighted Centroid method (as identified in option 1).

For example: The map shows that Census Output Area: E00075130 (highlighted area with red-edge) is 'split' between two wards – Emersons Green and Boyd Valley (the blue line). The orange dot is the population weighted centroid at the time of the 2011 Census. The black-dots are domestic premises (March 2019).



Option 1 - The standard ONS approach: 2011 population weighed centroid (the orange dot) would assign the COA to Boyd Valley Ward. This is because the majority of population within the COA was within Boyd Valley at the time of the 2011 Census - as no development had occurred at Lyde Green (within Emersons Green Ward) at this time.

Option 2 – Distribution based on current domestic premises: Would assign the COA to Emersons Green (ward), because the majority of the 956 domestic LLPG objects within in this COA (black spots) are located with Emersons Green Ward - 841 (88%) were within Emersons Green Ward and 115 (12%) were within Boyd Valley Ward.

Therefore in this case, Option 2 is likely to generate the most accurate estimates as recent development since 2011 has been focussed in Emersons Green (Lyde Green Development).

Testing the differences

Analysis was undertaken to compare the differences in outputs between the two options. The two options returned the same results in in 99% of cases – i.e. 825 of the 834 COAs were assigned to the same wards. Only 9 COAs returned different results. The main reason for the differences are residential development post 2011.

COA	Option 1 - 2011 population weighted centroid method (ONS approach) - assigns to:	Option 2 – Distribution of current residential premises (LLPG method) assigns to:
E00075130	Boyd Valley	Emersons Green
E00075131	Boyd Valley	Emersons Green
E00075232	Dodington	Chipping Sodbury & Cotswold Edge
E00075573	New Cheltenham	Staple Hill & Mangotsfield
E00075806	Hanham	Kingswood
E00075813	Woodstock	Hanham
E00075836	Yate Central	Dodington
E00075838	Yate Central	Dodington
E00075872	Yate Central	Yate North

Table 1. Instances where Option 1 and Option 2 assign COAs to different wards

Conclusion

Given the fact that it is likely to produce the more accurate estimates, and given the negligible differences between approaches, Option 2 is the preferred method for assigning COA level data to 'new wards'.

The lookup table showing which COAs are allocated to each ward is set out at Appendix A.

Users should be aware that, if / when ONS publish data for the 'new wards', it is likely that they will use Option 1. Therefore 'official' ward level estimates for some wards are likely to differ from those created by the Council. Differences are most likely to be focused on the Wards listed in Table 1.

For further information contact the Corporate Research & Consultation Team. 01454 863990 / 863862. Email: research@southglos.gov.uk

Appendix A – Lookup Table – COAs to South Gloucestershire 2019 Wards

COA	2019 Ward COA Assigned to (LLPG March 2019)
E00075090	Charlton & Cribbs
E00075091	Pilning & Severn Beach
E00075093	Severn Vale
E00075095	Severn Vale
E00075096	Severn Vale
E00075097	Severn Vale
E00075098	Pilning & Severn Beach
E00075099	Pilning & Severn Beach
E00075100	Pilning & Severn Beach
E00075101	Severn Vale
E00075102	Severn Vale
E00075103	Severn Vale
E00075104	Severn Vale
E00075105	Severn Vale
E00075106	Severn Vale
E00075107	Severn Vale
E00075108	Severn Vale
E00075109	Severn Vale
E00075110	Severn Vale
E00075111	Bitton & Oldland Common
E00075112	Bitton & Oldland Common
E00075113	Bitton & Oldland Common
E00075114	Bitton & Oldland Common
E00075115	Bitton & Oldland Common
E00075116	Bitton & Oldland Common
E00075117	Bitton & Oldland Common
E00075118	Bitton & Oldland Common
E00075119	Longwell Green
E00075120	Longwell Green
E00075121	Longwell Green
E00075122	Boyd Valley
E00075123	Boyd Valley
E00075124	Boyd Valley
E00075125	Boyd Valley
E00075126	Boyd Valley
E00075127	Boyd Valley
E00075128	Boyd Valley
E00075129	Boyd Valley
E00075130	Emersons Green
E00075131	Emersons Green
E00075132	Boyd Valley
E00075133	Boyd Valley
E00075134	Boyd Valley
E00075135	Boyd Valley
E00075136	Boyd Valley
E00075137	Boyd Valley
E00075138	Boyd Valley
E00075139	Boyd Valley
E00075140	Boyd Valley
E00075141	Boyd Valley
E00075142	Boyd Valley
E00075143	Boyd Valley
E00075144	Boyd Valley
E00075145	Bradley Stoke South
E00075146	Bradley Stoke South
E00075147	Stoke Gifford
E00075148	Stoke Gifford
E00075149	Bradley Stoke South
E00075150	Bradley Stoke South
E00075151	Bradley Stoke South
E00075152	Bradley Stoke South
E00075153	Bradley Stoke South
E00075154	Stoke Gifford
E00075155	Stoke Gifford
E00075156	Stoke Gifford
E00075157	Stoke Gifford
E00075158	Stoke Gifford
E00075159	Bradley Stoke South
E00075160	Bradley Stoke North
E00075161	Bradley Stoke North
E00075162	Bradley Stoke North
E00075163	Bradley Stoke North

E00075164	Bradley Stoke North
E00075165	Bradley Stoke North
E00075166	Bradley Stoke North
E00075167	Bradley Stoke North
E00075168	Bradley Stoke North
E00075169	Bradley Stoke North
E00075170	Bradley Stoke North
E00075171	Bradley Stoke North
E00075172	Bradley Stoke North
E00075173	Bradley Stoke North
E00075174	Bradley Stoke North
E00075175	Bradley Stoke North
E00075176	Bradley Stoke North
E00075177	Bradley Stoke North
E00075178	Bradley Stoke North
E00075179	Bradley Stoke North
E00075180	Bradley Stoke North
E00075181	Bradley Stoke North
E00075182	Bradley Stoke North
E00075183	Bradley Stoke North
E00075184	Bradley Stoke North
E00075185	Bradley Stoke North
E00075186	Bradley Stoke North
E00075187	Bradley Stoke North
E00075188	Bradley Stoke North
E00075189	Bradley Stoke South
E00075190	Bradley Stoke South
E00075191	Bradley Stoke South
E00075193	Bradley Stoke South
E00075194	Bradley Stoke South
E00075195	Bradley Stoke South
E00075196	Bradley Stoke South
E00075198	Bradley Stoke South
E00075199	Bradley Stoke South
E00075200	Bradley Stoke South
E00075201	Bradley Stoke South
E00075202	Bradley Stoke South
E00075203	Bradley Stoke South
E00075204	Bradley Stoke South
E00075205	Bradley Stoke South
E00075206	Charfield
E00075207	Charfield
E00075208	Charfield
E00075209	Charfield
E00075210	Charfield
E00075211	Charfield
E00075212	Charfield
E00075213	Charfield
E00075214	Charfield
E00075216	Charfield
E00075217	Charfield
E00075218	Dodington
E00075219	Dodington
E00075220	Dodington
E00075221	Dodington
E00075222	Dodington
E00075223	Dodington
E00075224	Chipping Sodbury & Cotswold Edge
E00075225	Chipping Sodbury & Cotswold Edge
E00075226	Chipping Sodbury & Cotswold Edge
E00075227	Chipping Sodbury & Cotswold Edge
E00075228	Chipping Sodbury & Cotswold Edge
E00075229	Chipping Sodbury & Cotswold Edge
E00075230	Chipping Sodbury & Cotswold Edge
E00075231	Chipping Sodbury & Cotswold Edge
E00075232	Chipping Sodbury & Cotswold Edge
E00075233	Chipping Sodbury & Cotswold Edge
E00075234	Chipping Sodbury & Cotswold Edge
E00075235	Chipping Sodbury & Cotswold Edge
E00075236	Chipping Sodbury & Cotswold Edge
E00075237	Chipping Sodbury & Cotswold Edge
E00075238	Chipping Sodbury & Cotswold Edge
E00075239	Chipping Sodbury & Cotswold Edge
E00075240	Chipping Sodbury & Cotswold Edge

E00075241	Chipping Sodbury & Cotswold Edge
E00075242	Boyd Valley
E00075243	Chipping Sodbury & Cotswold Edge
E00075244	Chipping Sodbury & Cotswold Edge
E00075245	Chipping Sodbury & Cotswold Edge
E00075246	Chipping Sodbury & Cotswold Edge
E00075247	Chipping Sodbury & Cotswold Edge
E00075248	Chipping Sodbury & Cotswold Edge
E00075249	Chipping Sodbury & Cotswold Edge
E00075250	Chipping Sodbury & Cotswold Edge
E00075251	Boyd Valley
E00075252	Dodington
E00075253	Dodington
E00075254	Dodington
E00075255	Dodington
E00075256	Dodington
E00075257	Dodington
E00075258	Dodington
E00075259	Dodington
E00075260	Dodington
E00075261	Dodington
E00075262	Dodington
E00075263	Dodington
E00075264	Dodington
E00075265	Dodington
E00075266	Dodington
E00075267	Dodington
E00075268	Dodington
E00075269	Dodington
E00075270	Dodington
E00075271	Dodington
E00075272	Dodington
E00075273	Dodington
E00075274	Frenchay & Downend
E00075275	Frenchay & Downend
E00075276	Frenchay & Downend
E00075277	Frenchay & Downend
E00075278	Staple Hill & Mangotsfield
E00075279	Staple Hill & Mangotsfield
E00075280	Staple Hill & Mangotsfield
E00075281	Frenchay & Downend
E00075282	Frenchay & Downend
E00075283	Staple Hill & Mangotsfield
E00075284	Frenchay & Downend
E00075285	Frenchay & Downend
E00075286	Frenchay & Downend
E00075287	Frenchay & Downend
E00075288	Frenchay & Downend
E00075289	Frenchay & Downend
E00075290	Frenchay & Downend
E00075291	Frenchay & Downend
E00075292	Frenchay & Downend
E00075293	Frenchay & Downend
E00075294	Frenchay & Downend
E00075295	Frenchay & Downend
E00075296	Frenchay & Downend
E00075297	Frenchay & Downend
E00075298	Frenchay & Downend
E00075299	Frenchay & Downend
E00075300	Frenchay & Downend
E00075301	Frenchay & Downend
E00075302	Frenchay & Downend
E00075303	Frenchay & Downend
E00075304	Frenchay & Downend
E00075305	Frenchay & Downend
E00075306	Frenchay & Downend
E00075307	Frenchay & Downend
E00075308	Filton
E00075309	Filton
E00075310	Filton
E00075311	Filton
E00075312	Filton
E00075313	Filton
E00075314	Filton

E00075315	Filton
E00075316	Filton
E00075317	Filton
E00075318	Filton
E00075319	Filton
E00075320	Filton
E00075321	Filton
E00075322	Filton
E00075323	Filton
E00075324	Filton
E00075325	Filton
E00075326	Filton
E00075327	Filton
E00075328	Filton
E00075329	Filton
E00075330	Filton
E00075331	Filton
E00075332	Filton
E00075333	Filton
E00075334	Filton
E00075335	Filton
E00075336	Filton
E00075337	Filton
E00075338	Filton
E00075339	Filton
E00075340	Filton
E00075341	Frampton Cotterell
E00075342	Frampton Cotterell
E00075343	Frampton Cotterell
E00075344	Frampton Cotterell
E00075345	Frampton Cotterell
E00075346	Frampton Cotterell
E00075347	Frampton Cotterell
E00075348	Frampton Cotterell
E00075349	Frampton Cotterell
E00075350	Frampton Cotterell
E00075351	Frampton Cotterell
E00075352	Frampton Cotterell
E00075353	Frampton Cotterell
E00075354	Frampton Cotterell
E00075355	Frampton Cotterell
E00075356	Frampton Cotterell
E00075357	Frampton Cotterell
E00075358	Frampton Cotterell
E00075359	Frampton Cotterell
E00075360	Hanham
E00075361	Hanham
E00075362	Hanham
E00075363	Hanham
E00075364	Hanham
E00075365	Hanham
E00075366	Hanham
E00075367	Hanham
E00075368	Hanham
E00075369	Hanham
E00075370	Hanham
E00075371	Hanham
E00075372	Hanham
E00075373	Hanham
E00075374	Hanham
E00075375	Hanham
E00075376	Hanham
E00075377	Hanham
E00075378	Hanham
E00075379	Hanham
E00075380	Hanham
E00075381	Hanham
E00075382	Hanham
E00075383	Hanham
E00075384	Hanham
E00075385	Hanham
E00075386	Hanham
E00075387	Hanham
E00075388	Hanham

E00075389	Hanham
E00075390	Hanham
E00075391	Hanham
E00075392	Woodstock
E00075393	Woodstock
E00075394	Woodstock
E00075395	New Cheltenham
E00075396	Kingswood
E00075397	New Cheltenham
E00075398	Woodstock
E00075399	Kingswood
E00075400	Kingswood
E00075401	Kingswood
E00075402	Woodstock
E00075403	Woodstock
E00075404	Kingswood
E00075405	Woodstock
E00075406	Woodstock
E00075407	Kingswood
E00075408	Woodstock
E00075409	Woodstock
E00075410	Kingswood
E00075411	Kingswood
E00075412	Woodstock
E00075413	Parkwall & Warmley
E00075414	Woodstock
E00075415	New Cheltenham
E00075416	New Cheltenham
E00075417	New Cheltenham
E00075418	Kingswood
E00075419	Kingswood
E00075420	Kingswood
E00075421	Kingswood
E00075422	New Cheltenham
E00075423	Woodstock
E00075424	Kingswood
E00075425	Kingswood
E00075426	New Cheltenham
E00075427	Frampton Cotterell
E00075428	Frampton Cotterell
E00075429	Frampton Cotterell
E00075430	Frampton Cotterell
E00075431	Frampton Cotterell
E00075432	Frampton Cotterell
E00075433	Frampton Cotterell
E00075434	Frampton Cotterell
E00075435	Chipping Sodbury & Cotswold Edge
E00075436	Chipping Sodbury & Cotswold Edge
E00075437	Chipping Sodbury & Cotswold Edge
E00075438	Chipping Sodbury & Cotswold Edge
E00075439	Chipping Sodbury & Cotswold Edge
E00075440	Chipping Sodbury & Cotswold Edge
E00075441	Longwell Green
E00075442	Longwell Green
E00075443	Longwell Green
E00075444	Longwell Green
E00075445	Longwell Green
E00075446	Longwell Green
E00075447	Longwell Green
E00075448	Longwell Green
E00075449	Longwell Green
E00075450	Longwell Green
E00075451	Longwell Green
E00075452	Longwell Green
E00075453	Longwell Green
E00075454	Longwell Green
E00075455	Longwell Green
E00075456	Longwell Green
E00075457	Longwell Green
E00075458	Longwell Green
E00075459	Longwell Green
E00075460	Longwell Green
E00075461	Longwell Green
E00075462	Longwell Green

E00075463	Longwell Green
E00075464	Longwell Green
E00075465	Bitton & Oldland Common
E00075466	Bitton & Oldland Common
E00075467	Bitton & Oldland Common
E00075468	Bitton & Oldland Common
E00075469	Bitton & Oldland Common
E00075470	Bitton & Oldland Common
E00075471	Bitton & Oldland Common
E00075472	Bitton & Oldland Common
E00075473	Bitton & Oldland Common
E00075474	Bitton & Oldland Common
E00075475	Bitton & Oldland Common
E00075476	Bitton & Oldland Common
E00075477	Bitton & Oldland Common
E00075478	Bitton & Oldland Common
E00075479	Bitton & Oldland Common
E00075480	Bitton & Oldland Common
E00075481	Bitton & Oldland Common
E00075482	Bitton & Oldland Common
E00075483	Bitton & Oldland Common
E00075484	Bitton & Oldland Common
E00075485	Bitton & Oldland Common
E00075486	Longwell Green
E00075487	Parkwall & Warmley
E00075488	Parkwall & Warmley
E00075489	Parkwall & Warmley
E00075490	Parkwall & Warmley
E00075491	Parkwall & Warmley
E00075492	Parkwall & Warmley
E00075493	Parkwall & Warmley
E00075494	Parkwall & Warmley
E00075495	Parkwall & Warmley
E00075496	Parkwall & Warmley
E00075497	Parkwall & Warmley
E00075498	Parkwall & Warmley
E00075499	Parkwall & Warmley
E00075500	Parkwall & Warmley
E00075501	Longwell Green
E00075502	Longwell Green
E00075503	Longwell Green
E00075504	Longwell Green
E00075505	Parkwall & Warmley
E00075506	Parkwall & Warmley
E00075507	Parkwall & Warmley
E00075508	Parkwall & Warmley
E00075509	Parkwall & Warmley
E00075510	Parkwall & Warmley
E00075511	Parkwall & Warmley
E00075512	Patchway Coniston
E00075513	Charlton & Cribbs
E00075514	Patchway Coniston
E00075515	Bradley Stoke North
E00075516	Patchway Coniston
E00075517	Patchway Coniston
E00075518	Patchway Coniston
E00075519	Patchway Coniston
E00075520	Patchway Coniston
E00075521	Bradley Stoke North
E00075522	Charlton & Cribbs
E00075523	Patchway Coniston
E00075524	Patchway Coniston
E00075525	Bradley Stoke North
E00075526	Patchway Coniston
E00075527	Bradley Stoke North
E00075528	Patchway Coniston
E00075529	Patchway Coniston
E00075530	Bradley Stoke North
E00075531	Patchway Coniston
E00075532	Patchway Coniston
E00075533	Patchway Coniston
E00075534	Patchway Coniston
E00075535	Bradley Stoke North
E00075536	Charlton & Cribbs

E00075537	Charlton & Cribbs
E00075538	Patchway Coniston
E00075539	Charlton & Cribbs
E00075540	Charlton & Cribbs
E00075541	Charlton & Cribbs
E00075542	Patchway Coniston
E00075543	Charlton & Cribbs
E00075544	Charlton & Cribbs
E00075545	Charlton & Cribbs
E00075546	Bradley Stoke North
E00075547	Pilning & Severn Beach
E00075548	Pilning & Severn Beach
E00075549	Pilning & Severn Beach
E00075550	Pilning & Severn Beach
E00075551	Pilning & Severn Beach
E00075552	Pilning & Severn Beach
E00075553	Pilning & Severn Beach
E00075554	Pilning & Severn Beach
E00075555	Pilning & Severn Beach
E00075556	Pilning & Severn Beach
E00075557	Pilning & Severn Beach
E00075558	Staple Hill & Mangotsfield
E00075559	Staple Hill & Mangotsfield
E00075560	Staple Hill & Mangotsfield
E00075561	Staple Hill & Mangotsfield
E00075562	Staple Hill & Mangotsfield
E00075563	Staple Hill & Mangotsfield
E00075564	Staple Hill & Mangotsfield
E00075565	Staple Hill & Mangotsfield
E00075566	Staple Hill & Mangotsfield
E00075567	Staple Hill & Mangotsfield
E00075568	Staple Hill & Mangotsfield
E00075569	Staple Hill & Mangotsfield
E00075570	Staple Hill & Mangotsfield
E00075571	Staple Hill & Mangotsfield
E00075572	New Cheltenham
E00075573	Staple Hill & Mangotsfield
E00075574	New Cheltenham
E00075575	New Cheltenham
E00075576	New Cheltenham
E00075577	New Cheltenham
E00075578	New Cheltenham
E00075579	New Cheltenham
E00075580	New Cheltenham
E00075581	New Cheltenham
E00075582	New Cheltenham
E00075583	New Cheltenham
E00075584	New Cheltenham
E00075585	New Cheltenham
E00075586	New Cheltenham
E00075587	New Cheltenham
E00075588	Staple Hill & Mangotsfield
E00075589	Severn Vale
E00075590	Severn Vale
E00075591	Severn Vale
E00075592	Severn Vale
E00075593	Severn Vale
E00075594	Severn Vale
E00075595	Severn Vale
E00075596	Severn Vale
E00075597	Severn Vale
E00075598	Severn Vale
E00075599	Severn Vale
E00075600	Severn Vale
E00075601	Severn Vale
E00075602	Emersons Green
E00075604	Emersons Green
E00075605	Emersons Green
E00075607	Emersons Green
E00075608	Emersons Green
E00075609	Emersons Green
E00075610	Emersons Green
E00075611	Emersons Green
E00075612	Emersons Green

E00075613	Emersons Green
E00075614	Emersons Green
E00075615	Emersons Green
E00075616	Emersons Green
E00075617	Emersons Green
E00075618	Emersons Green
E00075619	Emersons Green
E00075620	Emersons Green
E00075621	Emersons Green
E00075622	Emersons Green
E00075623	Emersons Green
E00075624	Emersons Green
E00075625	Emersons Green
E00075626	Emersons Green
E00075627	Emersons Green
E00075628	Emersons Green
E00075629	Emersons Green
E00075631	Emersons Green
E00075632	Emersons Green
E00075633	Emersons Green
E00075634	Emersons Green
E00075637	Parkwall & Warmley
E00075638	Parkwall & Warmley
E00075639	Parkwall & Warmley
E00075640	Parkwall & Warmley
E00075641	Parkwall & Warmley
E00075642	Parkwall & Warmley
E00075643	Parkwall & Warmley
E00075644	Frenchay & Downend
E00075645	Frenchay & Downend
E00075646	Frenchay & Downend
E00075647	Frenchay & Downend
E00075648	Staple Hill & Mangotsfield
E00075649	Staple Hill & Mangotsfield
E00075650	Staple Hill & Mangotsfield
E00075651	Staple Hill & Mangotsfield
E00075652	Staple Hill & Mangotsfield
E00075653	Staple Hill & Mangotsfield
E00075654	Staple Hill & Mangotsfield
E00075655	Staple Hill & Mangotsfield
E00075656	Staple Hill & Mangotsfield
E00075657	Staple Hill & Mangotsfield
E00075658	Staple Hill & Mangotsfield
E00075659	Staple Hill & Mangotsfield
E00075660	Staple Hill & Mangotsfield
E00075661	Staple Hill & Mangotsfield
E00075662	Staple Hill & Mangotsfield
E00075663	Staple Hill & Mangotsfield
E00075664	Staple Hill & Mangotsfield
E00075665	Staple Hill & Mangotsfield
E00075666	Staple Hill & Mangotsfield
E00075667	Staple Hill & Mangotsfield
E00075668	Staple Hill & Mangotsfield
E00075669	Staple Hill & Mangotsfield
E00075670	Staple Hill & Mangotsfield
E00075671	Staple Hill & Mangotsfield
E00075672	Staple Hill & Mangotsfield
E00075673	Stoke Gifford
E00075674	Stoke Gifford
E00075675	Stoke Gifford
E00075676	Stoke Gifford
E00075677	Stoke Gifford
E00075678	Stoke Gifford
E00075679	Stoke Gifford
E00075680	Stoke Gifford
E00075681	Stoke Gifford
E00075682	Stoke Gifford
E00075683	Stoke Gifford
E00075684	Stoke Gifford
E00075685	Stoke Gifford
E00075686	Stoke Gifford
E00075687	Stoke Gifford
E00075688	Stoke Gifford
E00075689	Stoke Gifford

E00075691	Stoke Gifford
E00075692	Stoke Gifford
E00075693	Stoke Gifford
E00075694	Stoke Gifford
E00075695	Stoke Gifford
E00075696	Stoke Gifford
E00075697	Stoke Gifford
E00075698	Stoke Gifford
E00075699	Stoke Gifford
E00075700	Stoke Gifford
E00075701	Stoke Gifford
E00075702	Stoke Gifford
E00075703	Stoke Gifford
E00075704	Stoke Gifford
E00075705	Stoke Gifford
E00075706	Stoke Gifford
E00075707	Stoke Gifford
E00075708	Stoke Gifford
E00075709	Charfield
E00075710	Charfield
E00075711	Thornbury
E00075712	Thornbury
E00075713	Thornbury
E00075714	Thornbury
E00075715	Thornbury
E00075716	Thornbury
E00075717	Thornbury
E00075718	Thornbury
E00075719	Thornbury
E00075720	Thornbury
E00075721	Thornbury
E00075722	Thornbury
E00075723	Thornbury
E00075724	Thornbury
E00075725	Thornbury
E00075726	Thornbury
E00075727	Thornbury
E00075728	Thornbury
E00075729	Thornbury
E00075730	Thornbury
E00075731	Thornbury
E00075732	Thornbury
E00075733	Thornbury
E00075734	Thornbury
E00075735	Thornbury
E00075736	Thornbury
E00075737	Thornbury
E00075738	Thornbury
E00075739	Thornbury
E00075740	Thornbury
E00075741	Thornbury
E00075742	Thornbury
E00075743	Thornbury
E00075744	Thornbury
E00075745	Thornbury
E00075746	Thornbury
E00075747	Thornbury
E00075748	Thornbury
E00075749	Thornbury
E00075750	Thornbury
E00075751	Frampton Cotterell
E00075752	Frampton Cotterell
E00075753	Frampton Cotterell
E00075754	Boyd Valley
E00075755	Frampton Cotterell
E00075756	Frampton Cotterell
E00075757	Boyd Valley
E00075758	Frampton Cotterell
E00075759	Frampton Cotterell
E00075760	Frampton Cotterell
E00075761	Frampton Cotterell
E00075762	Frampton Cotterell
E00075763	Frampton Cotterell
E00075764	Frampton Cotterell

E00075766	Winterbourne
E00075767	Winterbourne
E00075768	Frenchay & Downend
E00075769	Winterbourne
E00075770	Frenchay & Downend
E00075771	Frenchay & Downend
E00075772	Frenchay & Downend
E00075773	Frenchay & Downend
E00075774	Frenchay & Downend
E00075775	Winterbourne
E00075776	Winterbourne
E00075777	Winterbourne
E00075778	Winterbourne
E00075779	Winterbourne
E00075780	Winterbourne
E00075781	Winterbourne
E00075782	Winterbourne
E00075783	Winterbourne
E00075784	Winterbourne
E00075785	Winterbourne
E00075786	Winterbourne
E00075787	Winterbourne
E00075788	Winterbourne
E00075789	Winterbourne
E00075790	Winterbourne
E00075791	Winterbourne
E00075792	Winterbourne
E00075793	Winterbourne
E00075794	Woodstock
E00075795	Woodstock
E00075796	Woodstock
E00075797	Woodstock
E00075798	Woodstock
E00075799	Woodstock
E00075800	Hanham
E00075801	Woodstock
E00075802	Kingswood
E00075803	Kingswood
E00075804	Woodstock
E00075805	Woodstock
E00075806	Kingswood
E00075807	Woodstock
E00075808	Woodstock
E00075809	Hanham
E00075810	Hanham
E00075811	Woodstock
E00075812	Hanham
E00075813	Hanham
E00075814	Kingswood
E00075815	Kingswood
E00075816	Kingswood
E00075817	Kingswood
E00075818	Woodstock
E00075819	Woodstock
E00075820	Woodstock
E00075822	Kingswood
E00075823	Woodstock
E00075824	Kingswood
E00075825	Hanham
E00075826	Kingswood
E00075827	Woodstock
E00075828	Yate Central
E00075829	Yate Central
E00075830	Yate Central
E00075831	Yate Central
E00075832	Yate Central
E00075833	Yate Central
E00075834	Yate Central
E00075835	Yate Central
E00075836	Dodington
E00075837	Yate Central
E00075838	Dodington
E00075839	Yate Central
E00075840	Yate Central

E00075841	Yate Central
E00075842	Dodington
E00075843	Yate Central
E00075844	Yate Central
E00075845	Dodington
E00075846	Dodington
E00075847	Yate Central
E00075848	Yate Central
E00075849	Yate Central
E00075850	Yate North
E00075851	Yate North
E00075852	Yate Central
E00075853	Yate Central
E00075854	Yate Central
E00075855	Yate Central
E00075856	Yate Central
E00075857	Yate Central
E00075858	Yate North
E00075859	Yate North
E00075860	Yate North
E00075861	Yate North
E00075862	Yate North
E00075863	Yate North
E00075864	Yate North
E00075865	Yate North
E00075866	Yate North
E00075867	Yate North
E00075868	Yate North
E00075869	Yate North
E00075870	Yate North
E00075871	Yate Central
E00075872	Yate North
E00075873	Yate North
E00075874	Yate North
E00075875	Yate North
E00075876	Yate North
E00075877	Yate North
E00075878	Yate North
E00075879	Yate North
E00075880	Yate North
E00075881	Yate North
E00075882	Yate North
E00075883	Yate North
E00075884	Yate North
E00075885	Yate North
E00075886	Yate North
E00075887	Yate North
E00075888	Yate North
E00075889	Yate North
E00075890	Yate Central
E00075891	Yate North
E00075892	Yate North
E00075893	Yate North
E00173030	Bradley Stoke South
E00173032	Stoke Gifford
E00173033	Stoke Park & Cheswick
E00173035	Stoke Park & Cheswick
E00173036	Stoke Park & Cheswick
E00173038	Stoke Park & Cheswick
E00173040	Stoke Park & Cheswick
E00173041	Stoke Park & Cheswick
E00173043	Stoke Park & Cheswick
E00173044	Emersons Green
E00173046	Emersons Green
E00173047	Emersons Green
E00173049	Emersons Green
E00173050	Emersons Green
E00173052	Emersons Green
E00173054	Emersons Green
E00173055	Boyd Valley
E00173057	New Cheltenham
E00173058	New Cheltenham
E00173060	New Cheltenham
E00173061	Kingswood

E00173063	Kingswood
E00173064	Bradley Stoke South
E00173066	New Cheltenham
E00173068	Stoke Gifford
E00173069	Charfield
E00173071	Charfield
E00173072	Severn Vale
E00173074	Severn Vale
E00173075	Severn Vale
E00173077	Severn Vale
E00173078	Severn Vale
E00173080	Bradley Stoke South
E00173082	Bradley Stoke South
E00173083	Bradley Stoke South
E00173085	Bradley Stoke South
E00173086	Stoke Gifford
E00173088	Stoke Gifford
E00173089	Stoke Park & Cheswick
E00173091	Stoke Park & Cheswick
E00173092	New Cheltenham
E00173094	New Cheltenham
E00173096	New Cheltenham