

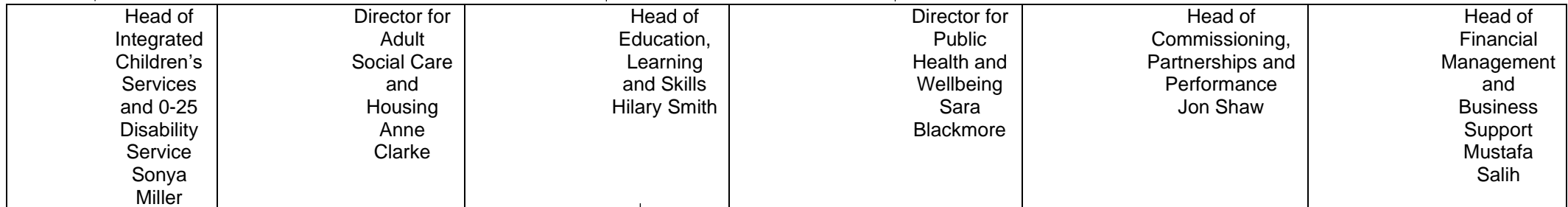
Children, Adults and Health MANAGEMENT TEAM

Director for Children Adults
and Health

Chris Sivers

PA to Director

Michelle Trigg



- Emergency Duty Team
- Vinney Green Secure Unit
- Children's Centres
- Parenting & Family Support (including school liaison)
- Youth Services
- Access & Response/CAF
- Families in Focus
- Referral, Assessment & Review
- Child Protection & Care Proceedings
- Children Looked After & Transition to Independence
- Corporate Parenting
- Private Fostering
- Fostering and Adoption
- 0-25 Disability Service
- Safeguarding

- Adult Social Care
- Customer Service team and Access
- Adult Safeguarding
- Hospital Promoting Independence Team
- Locality Teams (Social Work & Occupational Therapy Assessment & Review)
- Deprivation of Liberty Safeguarding
- **Direct Service Provision**
- Alexandra way Care home
- Cambrian Green Day Services
- Resilience Service
- Home Choice

- School Admissions & Transport Services
- Strategic Planning of School & Early Years Provision
- Childcare & Education Standards
- School Improvement
- Adult and Community Learning
- 14-19 Education, Learning, Employability and Skills
- Virtual School
- Educational Psychology
- Children Missing Education
- Education Welfare (Enforcement)
- Elective Home Education
- Governor Unit
- Early Years Quality Improvement

- Joint Strategic Needs Assessment
- Health, Lifestyles + Wellbeing
- Public Health Commissioning (Sexual health, PH nursing, drugs & alcohol)
- Public Health Intelligence and Research
- Healthcare Public Health (CCG + STP)
- CYP (e.g. ACE, Injury prevention)
- Mental Health
- Inequalities
- Built Environment
- Health Protection + Emergency Planning
- Stop Smoking Services
- Health in Schools

- Commissioning & Contracting Unit
- Strategic Safeguarding, Quality, Audit & Review
- Partnership Development
- Complaints & FOI
- Performance Management & Improvement (excluding schools)
- Information Management & Research
- ICT Support Systems
- Business Continuity & Emergency Planning
- Assurance and Improvement

- Budget Planning & Financial Management
- Schools Finance (DSG)
- Service Planning
- Capital Programme
- Asset Management
- Business Support
- Council Savings Programme Support
- Advice & Guidance on Business Cases
- Risk Management
- Departmental Account Manager for Corporate Functions
- Commissioning of Schools Services from S. Glos. Traded Services
- Communication, Consultation and Engagement
- Equalities