

Lunch time club for children with additional needs

■ CASE STUDY ■ Mud Pie Explorers ■

Mud Pie Explorers CIC was awarded Member Awarded Funding of £4,200 in 2019 to support children with additional needs to experience Forest School activities in lunchtime sessions at school.

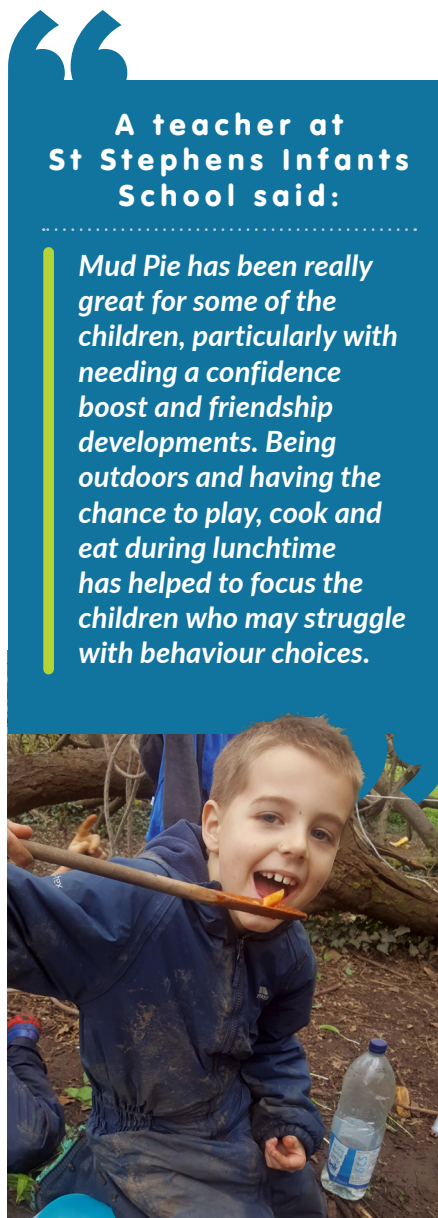
Children were taught risk assessment skills through using tools, cooking and tree climbing. They were also supported to learn conflict resolution and other social skills.

Each child that attended was chosen by a specialised teacher working in Special Educational Needs and Disability (SEND), or a senior teacher at the school.

The project enabled 48 children to access lunchtime provision to help meet individual sensory, social emotional and mental health needs through engaging with Forest School type activities. Some enjoyed the access to multi-sensory play such as mud kitchen, tree climbing, rope swing, cooking and clay-modelling. Some enjoyed time to be quiet in the hammock, looking at books and enjoying nature crafts.

Schools that participated in the project were:

St Stephens Infants School, (Kingswood),
 Abbotswood Primary School (Yate),
 Christ Church School (Hanham) and
 Stanbridge Primary School (Downend).



A teacher at St Stephens Infants School said:

Mud Pie has been really great for some of the children, particularly with needing a confidence boost and friendship developments. Being outdoors and having the chance to play, cook and eat during lunchtime has helped to focus the children who may struggle with behaviour choices.

To find out more about Forest School activities visit:

 www.mud-pies.co.uk

or

 www.facebook.com/groups/mudpieexplorers

Find out more about Member Awarded Funding

 www.southglos.gov.uk/MAF

© Photo credits Mud Pie Explorers CIC

