

# Berrows Mead, Rangeworthy

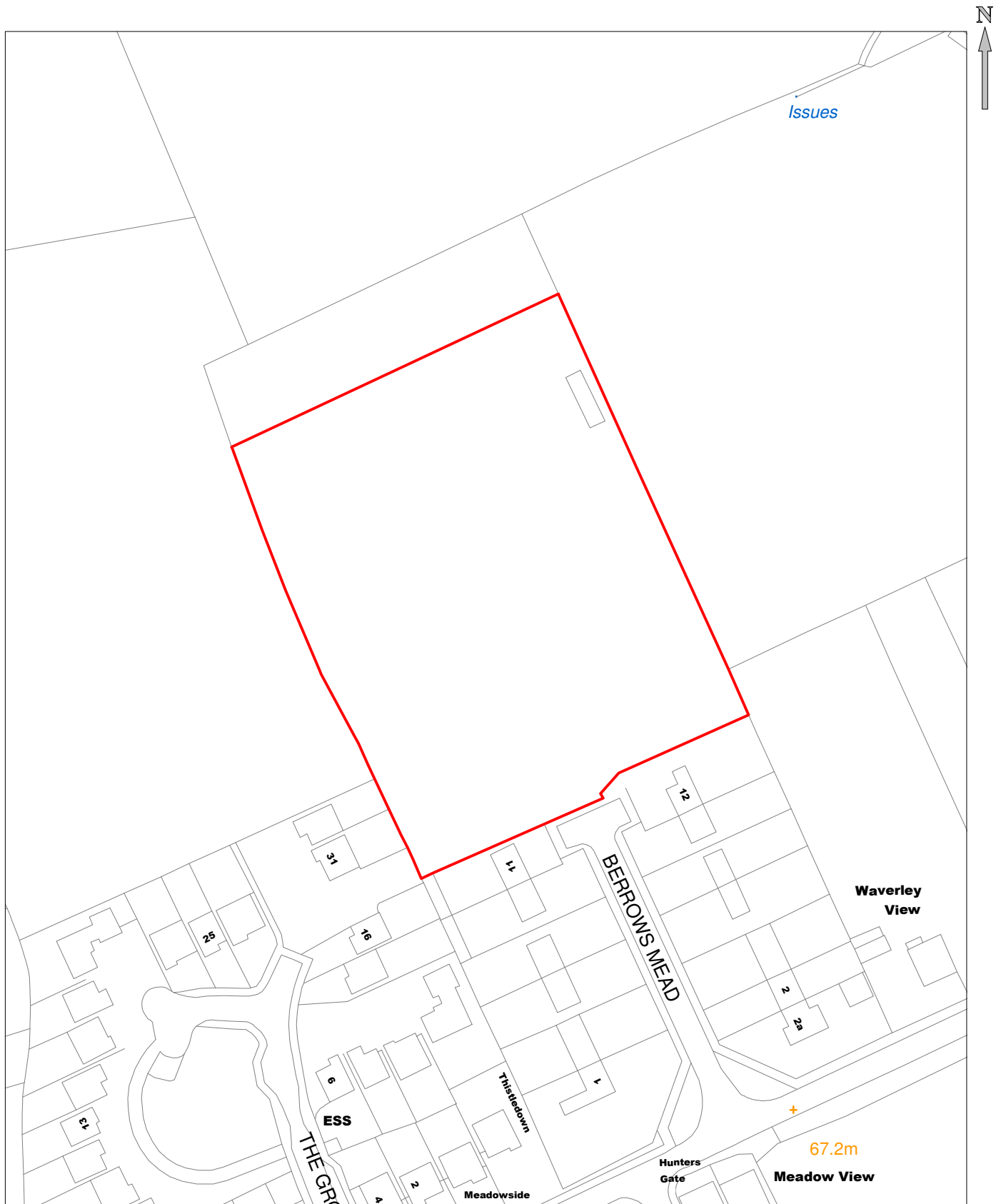
0.92 Hectares 2.28 Acres

CE&CR Department  
PO Box 300  
Property Services  
Civic Centre  
High Street  
BRISTOL  
BS15 0DS

Compiled By: Matthew Harris on 26 March 2014

Scale 1:1250

Telephone 01454 864918



Please note: this plan is an indication only of Council ownership.  
Definitive boundaries should be obtained from the relevant Deed Packet