

1. Introduction

Every ten years a census is carried out in England and Wales to produce an accurate estimate of the population. The 2011 Census took place on 27 March 2011.

The Office for National Statistics (ONS) is releasing data from the census in several phases. On 23 November 2012 the first release of small area statistics were published. Data is presented for Output Areas, Super Output Areas and wards in England and Wales as well as higher geographies. This note summarises the main findings of this data for the administrative wards in South Gloucestershire.

Users of this data should be aware that ONS has calculated statistics for wards by aggregating data for Output Areas on a 'best-fit' basis. In South Gloucestershire, some ward boundaries do not align with Output Areas (due to ward boundary re-organisation in May 2007), which means that data for some wards does not accurately represent the official administrative boundaries. The wards of Bradley Stoke North, Dodington and Yate Central are particularly affected by this issue. Further information is provided in a separate briefing note¹.

2. Population and household estimates

The main findings of this release are summarised in Table 1. In addition population data is available for five year age band and sex. These new estimates replace all small area estimates previously published by ONS. This data is also available for Lower Super Output Areas (LSOAs) and Output Areas.

3. Population

The total usual resident populationⁱ of South Gloucestershire is 262,767. The average population size for wards in South Gloucestershire is 7,508 people, although the number of residents varies considerably between wards; at 12,392 usual residents Emersons Green has the largest population and Cotswold Edge has the smallest (3,381).

4. Households

In South Gloucestershire, the total number of households with at least one usual resident (i.e. occupied households) was 107,538 on Census day. Stoke Gifford (4,914), Kings Chase (4,900) and Emersons Green (4,881) were the wards with the largest number of households. Cotswold Edge (1,377), Ladden Brook (1,428), Bitton (1,430) and Severn (1,434) had the fewest.

¹ A health warning about 2011 Census ward level data for South Gloucestershire. SGC Research and Consultation Team. January 2013.

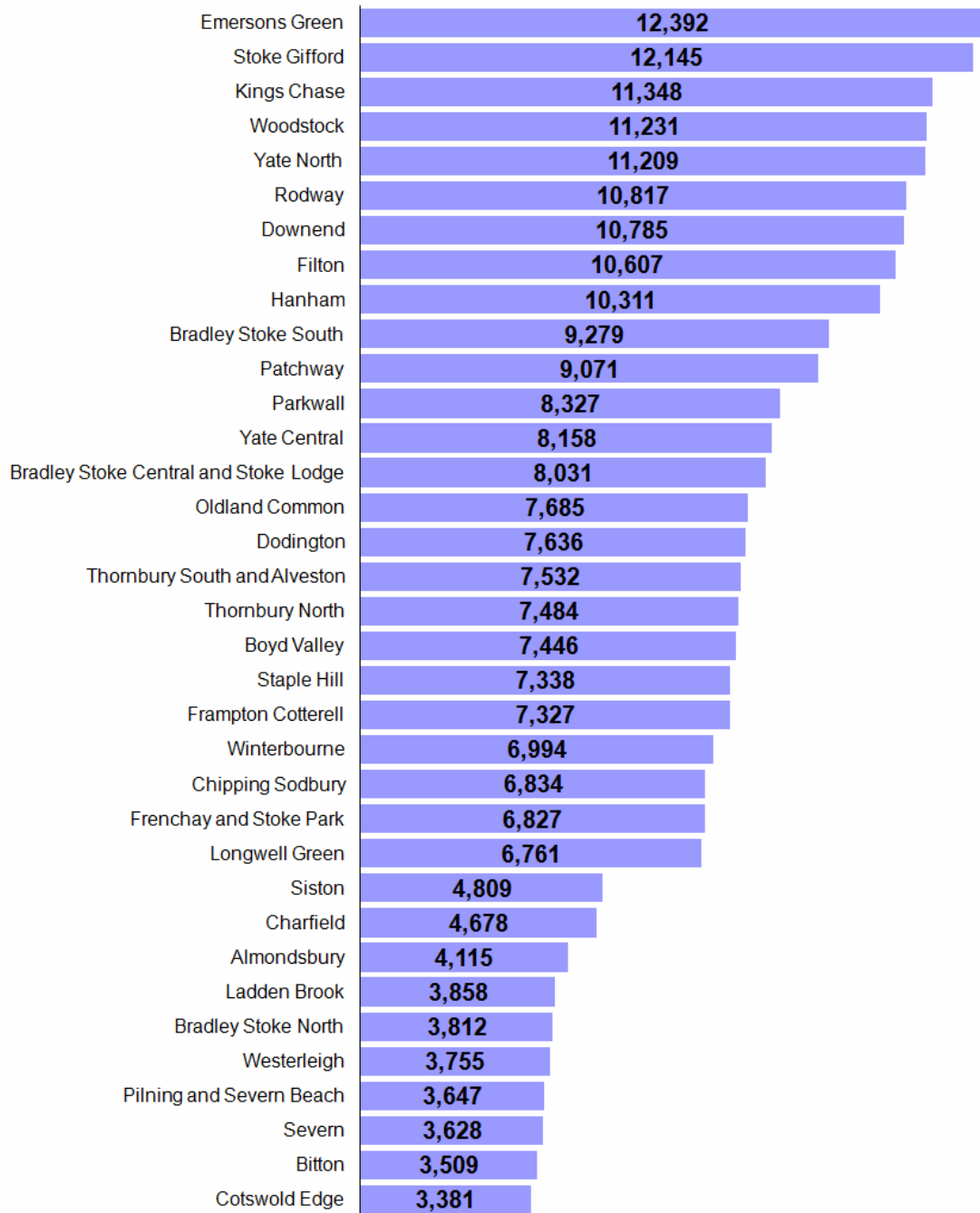
Table 1. 2011 Census Summary Statistics for wards in South Gloucestershire

Ward name	All usual residents (Persons)	Household residents (Persons)	Communal establishment residents (Persons)	Population density (persons per hectare)	Households with at least one usual resident	Average household size (persons per household)
Almondsbury	4,115	4,071	44	1.7	1,580	2.6
Bitton	3,509	3,462	47	3	1,430	2.4
Boyd Valley	7,446	7,319	127	1	3,025	2.4
Bradley Stoke Central and Stoke Lodge	8,031	8,027	4	48.5	3,381	2.4
Bradley Stoke North	3,812	3,812	0	32.8	1,668	2.3
Bradley Stoke South	9,279	9,262	17	45.3	3,721	2.5
Charfield	4,678	3,951	727	1.5	1,513	2.6
Chipping Sodbury	6,834	6,769	65	13.2	2,915	2.3
Cotswold Edge	3,381	3,338	43	0.4	1,377	2.4
Dodington	7,636	7,618	18	55.9	2,953	2.6
Downend	10,785	10,697	88	40.8	4,527	2.4
Emersons Green	12,392	12,383	9	28.6	4,881	2.5
Filton	10,607	10,531	76	26.1	4,514	2.3
Frampton Cotterell	7,327	7,300	27	3.8	2,900	2.5
Frenchay and Stoke Park	6,827	4,942	1,885	11.9	2,173	2.3
Hanham	10,311	10,238	73	29.1	4,308	2.4
Kings Chase	11,348	11,131	217	57.3	4,900	2.3
Ladden Brook	3,858	3,792	66	1.2	1,428	2.7
Longwell Green	6,761	6,733	28	18.4	2,867	2.3
Oldland Common	7,685	7,650	35	21.3	3,100	2.5
Parkwall	8,327	8,272	55	43.8	3,485	2.4
Patchway	9,071	9,056	15	11.5	3,852	2.4
Pilning and Severn Beach	3,647	3,639	8	2.4	1,507	2.4
Rodway	10,817	10,813	4	51.6	4,419	2.4
Severn	3,628	3,583	45	0.6	1,434	2.5
Siston	4,809	4,727	82	5.9	1,956	2.4
Staple Hill	7,338	7,293	45	57.6	3,413	2.1
Stoke Gifford	12,145	12,100	45	40.4	4,914	2.5
Thornbury North	7,484	7,336	148	5.4	3,255	2.3
Thornbury South and Alveston	7,532	7,510	22	5.3	3,132	2.4
Westerleigh	3,755	3,723	32	1.2	1,551	2.4
Winterbourne	6,994	6,903	91	6.4	2,817	2.5
Woodstock	11,231	11,092	139	52.5	4,752	2.3
Yate Central	8,158	8,008	150	31.2	3,361	2.4
Yate North	11,209	11,126	83	19.9	4,529	2.5
South Gloucestershire	262,767	258,207	4,560	5.3	107,538	2.4

Source: 2011 Census Table PHP01. Office for National Statistics © Crown Copyright 2012.

Users of this data should be aware that ONS has calculated statistics for wards by aggregating data for Output Areas on a 'best-fit' basis. In South Gloucestershire some ward boundaries do not align with Output Areas (due to ward boundary re-organisation in May 2007) so caution should be taken when using this data.

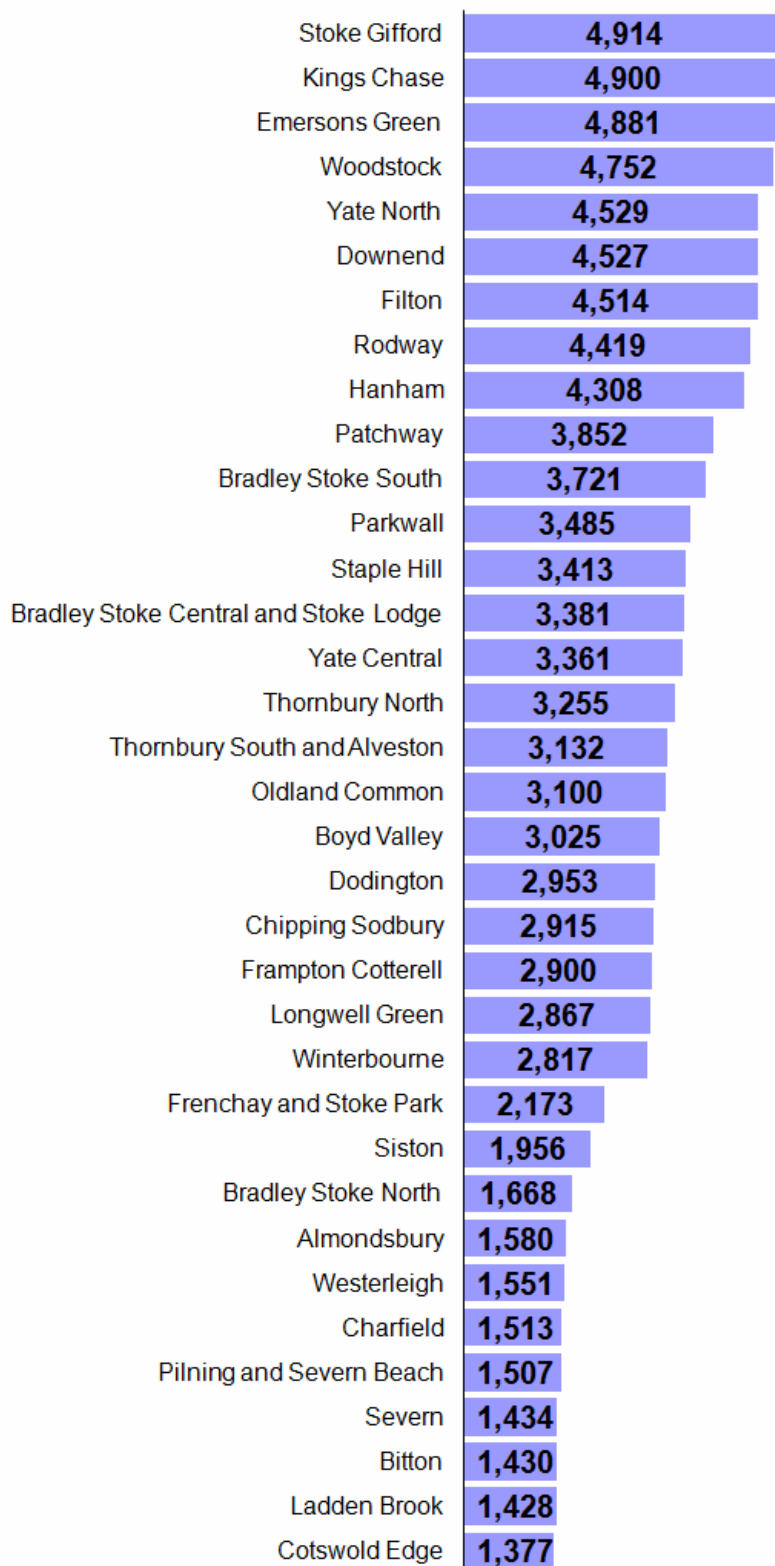
Persons (All usual residents)



Source: 2011 Census Table PHP01. Office for National Statistics © Crown Copyright 2012.

Users of this data should be aware that ONS has calculated statistics for wards by aggregating data for Output Areas on a 'best-fit' basis. In South Gloucestershire some ward boundaries do not align with Output Areas (due to ward boundary re-organisation in May 2007) so caution should be taken when using this data.

Households (at least one usual resident)



Source: 2011 Census Table PHP01. Office for National Statistics © Crown Copyright 2012.

Users of this data should be aware that ONS has calculated statistics for wards by aggregating data for Output Areas on a 'best-fit' basis. In South Gloucestershire some ward boundaries do not align with Output Areas (due to ward boundary re-organisation in May 2007) so caution should be taken when using this data.

5. People living in households and communal establishments

Around 98% of South Gloucestershire's population live in householdsⁱⁱ, the remainder live in Communal Establishmentsⁱⁱⁱ. In most wards, over 98% of the population live in households, notable exceptions are Frenchay and Stoke Park (where 28% of the population live in Communal Establishments), and Charfield (where 16% of the population live in CE's). These considerable differences can be explained by the student villages at UWE Frenchay campus (Frenchay and Stoke Park) and HMP Layhill in Charfield.

6. Population density

Population density (the number of people per hectare) is highest in the urban areas of the district and lowest in the rural areas. At 57.6 people per hectare (pph), Staple Hill has the highest population density and Cotswold Edge has the lowest (0.4 pph).

7. Average household size

The average household size in South Gloucestershire is 2.4 persons per household. At 2.7 persons per household, Ladden Brook has the largest average household size and Staple Hill has the smallest (2.1 persons per household).

8. Population age structure

The broad age structure of each ward is illustrated overleaf.

Children (age 0-14)^{iv}: In South Gloucestershire 46,391 people (17.7% of the total population) are children. The following wards have the highest proportion of children:

- Emersons Green (23.1%)
- Bradley Stoke South (23.0%)
- Dodington (22.1%)

And the following wards have the lowest proportion of children:

- Frenchay and Stoke Park (11.8%)
- Westerleigh (13.5%)
- Thornbury North (14.6%)

Working age population (aged 15-64)^v: In South Gloucestershire 171,967 (65.4% of the total population) are of working age. The following wards have the largest proportion of working age residents:

- Frenchay and Stoke Park (77.9%)
- Bradley Stoke South (72.6%)
- Bradley Stoke North (71.4%)

And the following wards have the lowest proportion of working age residents:

- Winterbourne (58.8%)
- Westerleigh (59.5%)
- Downend (60.5%)

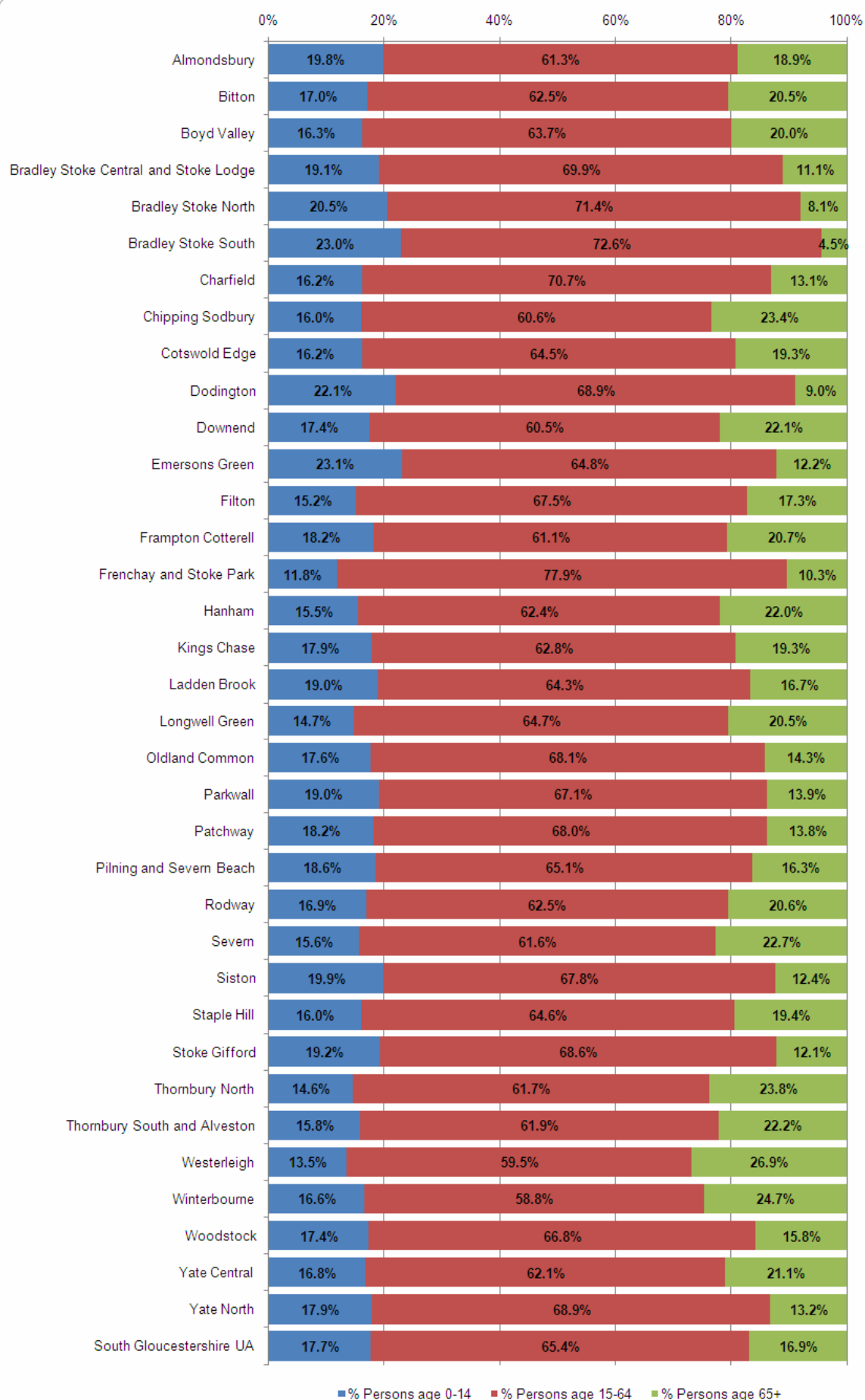
Older people (aged 65+): In South Gloucestershire 44,409 (16.9% of the total population) are aged 65 or over. The following wards have the highest proportion of older people:

- Westerleigh (26.9%)
- Winterbourne (24.7%)
- Thornbury North (23.8%)

In contrast, the following wards have the lowest proportion of older people:

- Bradley Stoke South (4.5%)
- Bradley Stoke North (8.1%)
- Dodington (9.0%)

Broad age structure – South Gloucestershire wards



Source: 2011 Census Table PHP01. Office for National Statistics © Crown Copyright 2012.

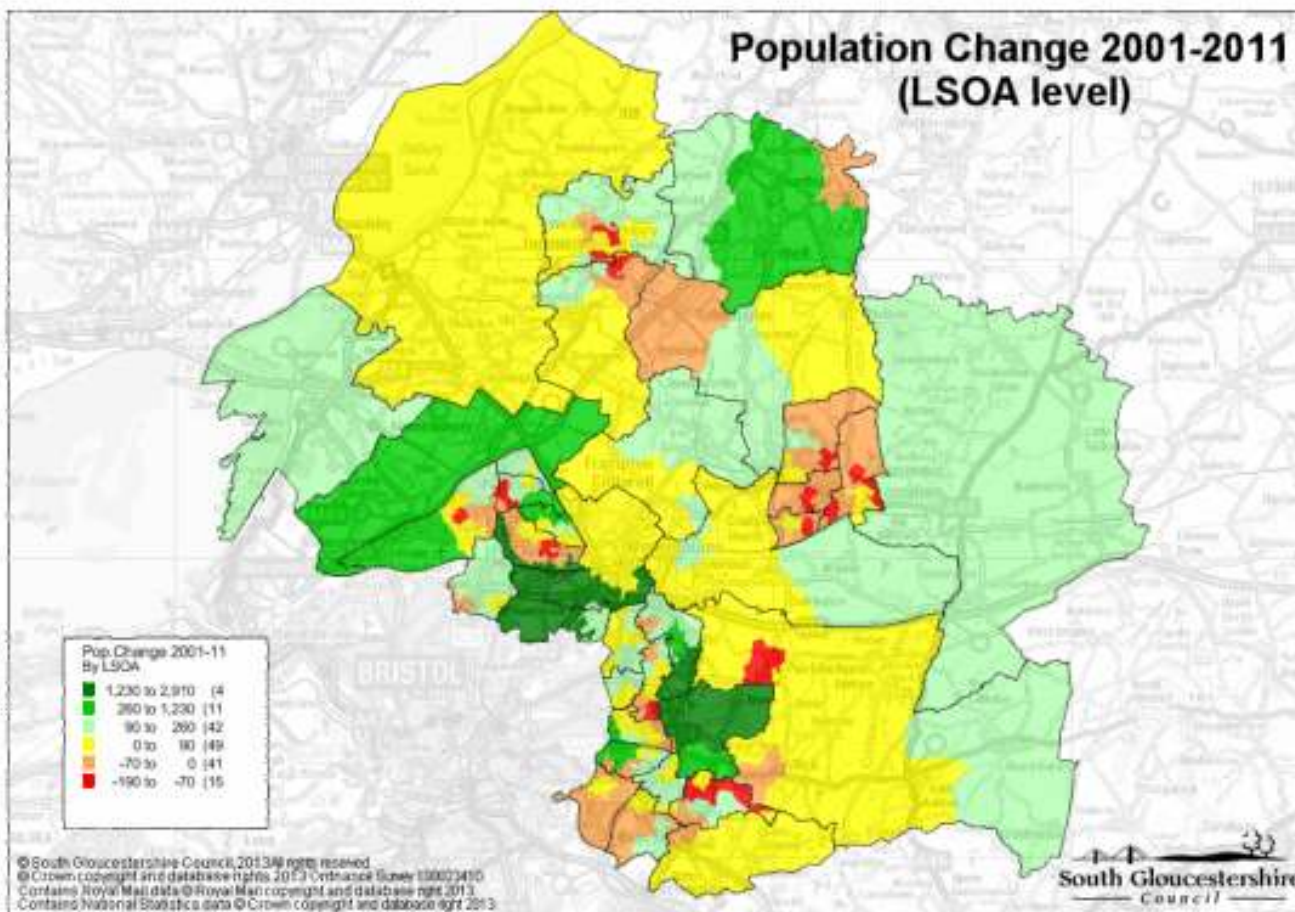
Users of this data should be aware that ONS has calculated statistics for wards by aggregating data for Output Areas on a 'best-fit' basis. In South Gloucestershire some ward boundaries do not align with Output Areas (due to ward boundary re-organisation in May 2007) so caution should be taken when using this data.

9. Population change 2001-2011

Between 2001 and 2011 the total population of the district increased by 17,126 people (+7.0%).

Change has not been uniform across the district, however due to ward boundary changes in May 2007 and the fact that the ward level census data for 2011 is only available on a 'best-fit' basis, it is not possible to make accurate comparisons between censuses. However, analysis at a more detailed geographical level (LSOA level) shows that, over the past decade, areas within Frenchay and Stoke Park, Emersons Green and Siston have undergone significant population increases (reflective of high levels of residential development). In contrast, areas within Boyd Valley, Thornbury and Dodington have experienced some of the biggest population decreases (Map 1).

Map 1. Population change between 2001 and 2011 at LSOA level



Source: 2001 Census (KS01), 2011 Census (PHP01). Office for National Statistics © Crown Copyright 2012

10. Further data releases

More census data will be published in a series of releases throughout 2013. These releases will include more detail (such as ethnicity, car availability, health and qualifications) at various geographical levels. Further analysis and areas profiles for South Gloucestershire will be produced and made available via the council website.

11. Further information

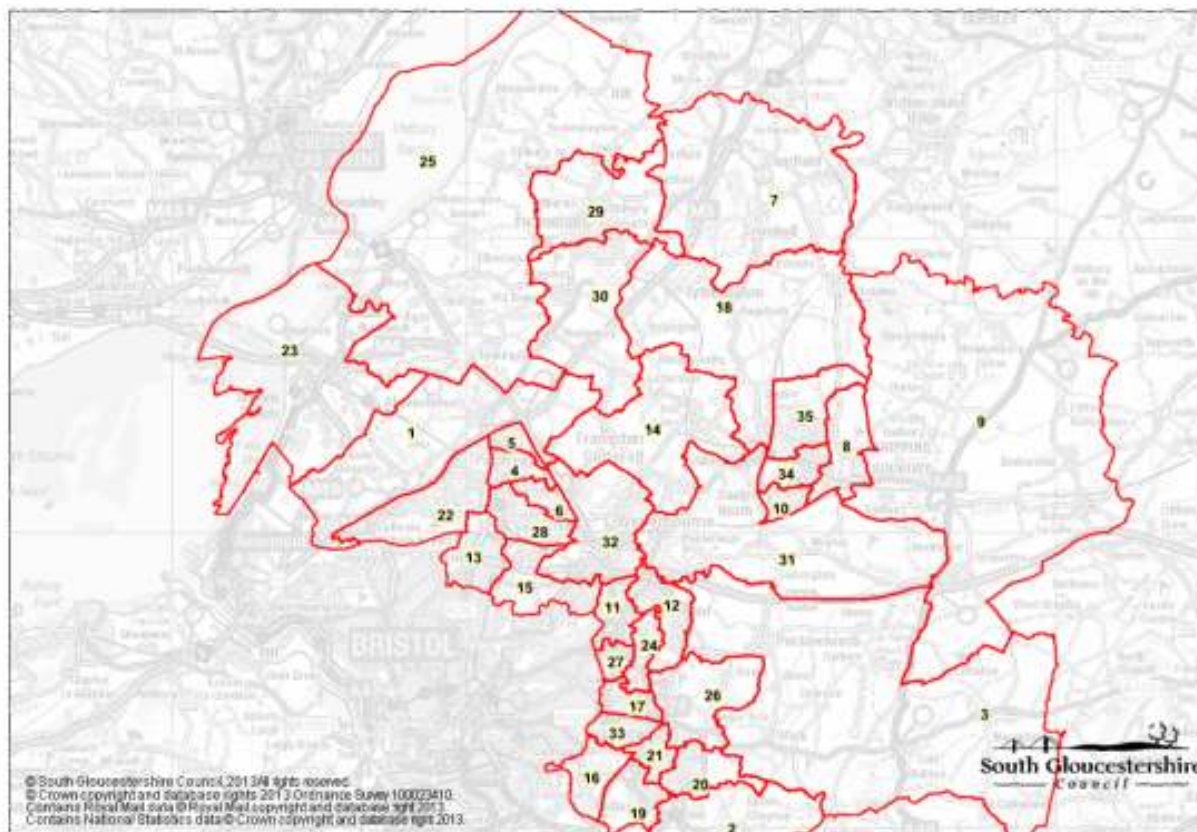
Further information about the 2011 Census can be found on the Office for National Statistics website.

Alternatively contact the Corporate Research and Consultation Team: 01454 863990.

Email: andy.cornelius@southglos.gov.uk

Andy Cornelius
Dec. 2012

Appendix A – Map of ward boundaries



ID	Name	ID	Name
1	Almondsbury	19	Longwell Green
2	Bitton	20	Oldland Common
3	Boyd Valley	21	Parkwall
4	Bradley Stoke Central and Stoke Lodge	22	Patchway
5	Bradley Stoke North	23	Pilning and Severn Beach
6	Bradley Stoke South	24	Rodway
7	Charfield	25	Severn
8	Chipping Sodbury	26	Siston
9	Cotswold Edge	27	Staple Hill
10	Dodington	28	Stoke Gifford
11	Downend	29	Thornbury North
12	Emersons Green	30	Thornbury South and Alveston
13	Filton	31	Westerleigh
14	Frampton Cotterell	32	Winterbourne
15	Frenchay and Stoke Park	33	Woodstock
16	Hanham	34	Yate Central
17	Kings Chase	35	Yate North
18	Ladden Brook		

FOOTNOTES

ⁱ **Usually resident population** refers to people who live in England and Wales for 12 months or more. For 2011 Census purposes, a usual resident of the UK is anyone who, on census day, was in the UK for 12 months or more, or had a permanent UK address and was outside the UK and intended to be outside the UK for less than 12 months. Students and school borders are counted at their term-time address.

ⁱⁱ **A household is:** One person living alone; or

- A group of people (not necessarily related) living at the same address who share cooking facilities and share a living room or sitting room or dining area

Includes:

- Sheltered accommodation units in an establishment where 50 per cent or more have their own kitchens should be defined as households (irrespective of whether there are other communal facilities)
- All people living in caravans on any type of site that is their usual residence should be treated as households. This will include anyone who has no other usual residence elsewhere in the UK.

A group of short-term migrants living together are not classified as a household, and neither are addresses where only visitors are staying.

ⁱⁱⁱ **A communal establishment resident:** is a person living in managed residential accommodation who has lived, or intends to live there for six months or more. Communal establishments include sheltered accommodation units, hotels, guest houses, prisons and all accommodation provided solely for students during term time.

^{iv} The usual **definition of children** is all people aged 0-15 years. This 2011 Census data release, however only includes population by five year age band, so we can only refer to 0-14 year olds

^v The usual **definition of the working age population** is all people aged 16-64 years. This 2011 Census data release, however only includes population by five year age band, so we can only refer to 15-64 year olds