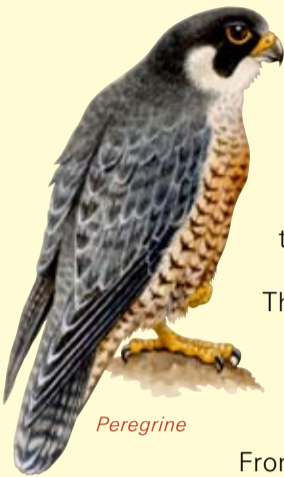


A PARADISE RIGHT ON OUR DOORSTEPS

The Wick Golden Valley Local Nature Reserve is an important and unique place. There are few reserves in South Gloucestershire with such a diverse habitat so readily accessible to the local community. The range of habitats includes the river corridor of the River Boyd, mature woodland, scrub, steep valley slopes and unimproved limestone grassland.



Peregrine

Structures of the industrial past are largely unrecognisable to visitors but many local residents can describe the location and function of buildings used in the processing of ochre in the valley bottom.

The majority of the reserve is contained within the river valley. The exception is Ravens Rock, which rises as a plateau above the valley.

From this promontory there is a spectacular view of Wick Quarry. To the east of the rock is a steep cliff dropping to a wetland area created by the weir.

River Corridor

The River Boyd runs through the site and acts as a corridor for birds and bats, as well as supporting otters and a wide variety of fish and other forms of aquatic life.



Beautiful Demoiselle

The Woodlands



Great Spotted Woodpecker

Throughout the woodland you will find sessile oak, ash, and small numbers of wych elm. Silver birch is found in the mosaic of scrub. Sycamore forms a canopy near the site of the former Rock House. Wild service tree, an indicator of older and well-established woodlands, occurs as well as beech, apple, wild cherry, hazel, whitebeam and hawthorn. A single small leaved lime, possibly planted, is found in the valley woodland. Flowers associated with long established woodland found here, include bluebell, wood spurge, lords-and-ladies, pignut, hairy violet, wood anemone and ramsons.



Whitebeam



Wild Service Tree

Since the closure of the ochre works, nature has been allowed to reclaim the land. Goat willow, silver birch, bramble, buddleia, bracken and snowberry grow on the scrub areas. Flowers include evening primrose, purple loosestrife, foxgloves, valerian, bellflower and agrimony.

Scrub



Nettle-leaved Bellflower

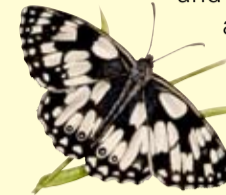
Look out for dippers and kingfishers along the river. Listen for blackbirds, wrens, wood pigeons, chiffchaffs, woodpeckers and many other birds in the woods, whilst ravens, and peregrines may be seen from Ravens Rock.

Grassland



Common Blue

A large area of unimproved grassland is found at Ravens Rock. In summer the grassland is transformed into a meadow full of flowers like scabious, wild marjoram, harebell, vetch, woolly thistle, viper's bugloss and pyramidal, spotted and bee orchids.



Marbled White

These attract a myriad of butterflies such as common blue, small tortoiseshell, orange tip, marbled white, peacock and painted lady and moths like six-spot burnet.



Bee Orchid

Birds and mammals



Dipper

Otters frequent the River Boyd, whilst small mammals such as hedgehogs, stoats, weasels and squirrels inhabit the reserve, together with at least eight species of bat.



Greater Horseshoe Bat

Wick Golden Valley · Wick Golden Valley · Wick Golden Valley · Wick Golden Valley · Wick Golden Valley · Wick Golden Valley · Wick Golden Valley · Wick Golden Valley · Wick Golden Valley · Wick Golden Valley

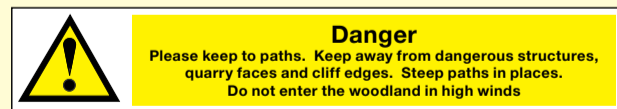


A place for everyone

We hope you enjoy your visit to the Golden Valley and share our vision for the conservation of this wildlife haven.

Please always follow the Countryside Code:

- Enjoy the countryside and respect its life & work
- Guard against all risk of fire
- Keep dogs under close control and out of the river. Stay on the paths and pick up after them
- Use gates and stiles to cross fences, hedges and walls
- Keep to public paths across farmland
- Leave livestock, crops and machinery alone
- Help keep all water clean
- Protect wildlife, plants and trees
- Make no unnecessary noise
- Take your litter home



You can help



The Friends of Wick Golden Valley Local Nature Reserve help to look after the reserve and organise a range of talks, walks and activities.

The group is open to anybody who has an interest in the reserve. Membership forms may be collected from Wick Post Office or downloaded from the website www.golden-valley.info

Wick Golden Valley Local Nature Reserve

Wick Golden Valley is designated as a Local Nature Reserve in recognition of its value to the local community as a site of nature conservation importance and industrial heritage. The site is owned by Cemex and managed in partnership with South Gloucestershire Council.

For further information visit www.golden-valley.info or www.southglos.gov.uk (access is free from local libraries)



© Crown Copyright LA100023410, 2009

Where it is and how to get there

The reserve is in Wick, South Gloucestershire and forms part of the Forest of Avon www.forestofavon.org



On foot

There are several access points. The most accessible is the main entrance via Golden Valley Road off the A420 (OS ref: ST704729). Please refer to public and permissive footpaths on the map inside this leaflet.

By cycle

There are two cycle stands at the main entrance.

By bus



There are nearby bus stops for services into Bristol and Bath and the surrounding area.

By car

Please park at Wick Village Hall (OS ref: ST704727, Postcode: BS30 5RG). There are two spaces at the Carpenters Arms for blue badge holders.

Acknowledgements: This leaflet was written by the Friends of Wick Golden Valley Local Nature Reserve. Illustrations drawn by Don Hamblett. RSPB images: Raven - Mike Read Dipper - Mike Lane Friends Group Photograph - Sheila Keene



Wick Golden Valley · Wick Golden Valley · Wick Golden Valley



Layout by Design + Print Services South Gloucestershire Council • CEBCR 51/12 • © Printed on recycled paper



