

Summary - Jan 2018

DRAFT

# Strategy for Children & Young People 0-25 years with Special Educational Needs and Disabilities in South Gloucestershire

2018 - 2023 **SUMMARY**



South Gloucestershire  
Clinical Commissioning Group







# Our Vision

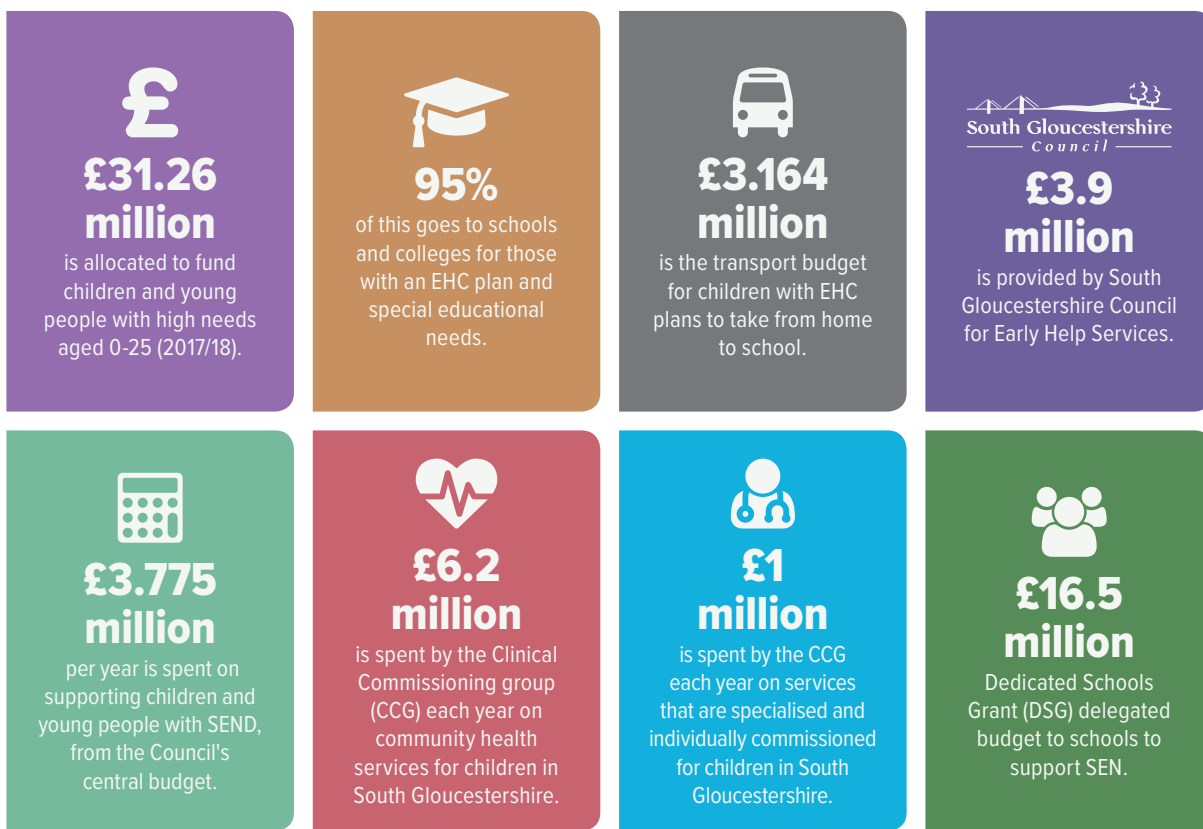
*Enabling children with SEND to achieve their potential in a safe, caring and supportive community.*

**PLEASE NOTE** that, although this document has been formatted and designed to make it easier to view and comment upon, it is still very much a draft document. The final strategy will be produced following public consultation from January 2018.

# Introduction

This is a draft five year Strategy that sets out our vision to renew and re-configure services and partnerships to deliver improved and effective SEND provision and services in South Gloucestershire from 2018-2023.

## FUNDING IN SOUTH GLOUCESTERSHIRE IS SUMMARISED AS FOLLOWS



We already know that we can do a better job of co-ordinating what we do. This Strategy demonstrates a new approach to the development and implementation of services and provision in the South Gloucestershire local area through co-production.

Through this strategy we will make sure there are better opportunities and better information. We will also make it simpler for parents to be involved in big decisions about SEND.

There will be a focus on key transition points in a child's life and on life outside of settings, schools and colleges recognising that children want to enjoy play and leisure and to travel independently wherever possible.

### FOR THE PURPOSE OF THIS DOCUMENT

SEE BACK COVER FOR MORE DETAILS

The term 'child or children' refers to children, young people and young adults

The term 'parents' refers to parents and carers

# Our Vision

Enabling children with SEND to achieve their potential in a safe, caring and supportive community.

## Our Principles

Our principles are derived through listening to families and practitioners. We have developed our priorities, principles and key actions from the engagement we have undertaken. Support, services and provision will be developed for children with SEND in order to improve outcomes for children.

We will adopt the following principles which will be embedded in everything we do throughout the South Gloucestershire local area.

### 1 Communication

Communication will be a golden thread running through all the SEND priorities and activities. We will be clear, open and honest with all our audiences. We will set out who does what, how it works, what to expect and when, how we will keep each other informed and how we will know if it is working

### 2 Collective responsibility

SEND is everyone's responsibility, where everyone plays their part to support and enable children and their families to achieve their aspirations

### 3 Being involved

The views and voice of the child and their family will be at the centre of everything we do. Children and families will feel listened to and involved in planning for their future, and in the co-design of local services

### 4 Working in partnership

The focus will be on working jointly across the local area with children and their families and agencies including Education, Health and Social Care and the voluntary sector to deliver better outcomes for children with SEND

*Communication is so important. People should always get a response when contacting services – even auto response is better than feeling ignored.*

Parent /Carer

*I need my teachers to understand I need help.*

Child

*The Team we have that supports my child is so important. It's great having health professionals and school working together along with myself to help my son.*

Parent /Carer



*I would prefer not to get help from agencies but because of my daughter's needs I have no choice, I need help to know how to better support my daughter*  
**Parent /Carer**

**⑥ Feeling safe and valued**

An inclusive culture will be fostered so that children feel that they belong, that they are supported and are included within their community. Parents will feel empowered to support their child through being aware of the support available and better informed to make choices and decisions

*I want to go to a school where people are nice to me*  
**5 year old child**

**⑥ Ensuring financial sustainability**

SEND budgets will be spent creatively, carefully and efficiently, and have a real understanding of what types of investment best benefit our children. Provision and services will be jointly commissioned to ensure clear pathways between services whilst improving financial sustainability.

# SEND in South Gloucestershire

Out of 39,701 children in South Gloucestershire, approximately 6,100 have additional support with their special educational needs (SEND).

South Gloucestershire has approximately 1720 children who have EHC plans (including 220 children with statements of SEND – these will be converted to EHC plans by March 2018) and 4,391 children who are supported at SEN support. In the age range 2-18 school population, South Gloucestershire has a higher number of children placed at local mainstream schools and academies (including resource bases and units) than other local authorities in the South West and nationally. In contrast, the number of placements at special schools is lower in comparison with national data. There is a higher number of placements at independent non-maintained schools and colleges.

South Gloucestershire has a greater proportion of school age children identified with SEND with an EHC plan than the England national average (3.2% of school aged children in South Gloucestershire compared to 2.8% across England); In contrast there is a lower proportion of children identified at SEND Support in South Gloucestershire than the national average.

This Strategy will support local schools and settings to identify need at SEND Support and implement interventions through an “assess plan do review” cycle called the graduated approach.

---

## POPULATION GROWTH

---

The preschool and school age population is expected to grow by 8% by 2020 and significantly during the period of this strategy. The number of children with SEND is expected to keep pace with this growth.

# Our Priorities

We will deliver the SEND Strategy through the key actions for each of the six priorities. There are detailed activities linked to each of the key actions which have been started and need to be developed once consultation and agreement on the strategy is complete and these will form an action plan.

1

## Access to information, advice and signposting

Children, parents and practitioners have access to information on education health and social care in one accessible place and families have access to advice and signposting at the right time.

2

## Timely identification and assessment leading to improved outcomes

Children's needs are identified, interventions are put in place which are reviewed regularly through the Assess, Plan, Do, Review cycle. This cycle will place the child at the centre using the person centred planning approach.

3

## Lead, co-ordinate and ensure accountability

Lead and co-ordinate multi-agency pathways, ensuring accountability across the local area to achieve positive outcomes for individual children and their families.

4

## Plan sufficient services and provision to be available within the community

Plan sufficient services and provision to enable children and their families to feel supported and included within the community.

5

## Plan ahead for smooth transitions

Plan transitions from pre-school into primary, primary to secondary and post 16 so that there is a smooth and fulfilling pathway through a child's life using a nurturing approach.

6

## Support, training and development

Plan the ongoing delivery of support, training and skills development for the people involved in supporting children with SEND and their families.

# Making it all happen

## Governance and accountability

The South Gloucestershire Clinical Commissioning Group and South Gloucestershire Council are committed to the vision for children with SEND and to providing joint leadership to deliver this Strategy. They will jointly be responsible for the support of all children with SEND in South Gloucestershire and will include greater involvement from parents and carers and young people.

The SEND Partnership Board will ensure the Strategy is implemented. Priorities and progress against the key actions and impact will be reported to the SEND Partnership Board on a quarterly basis.

---

### MEMBERSHIP OF THE BOARD

---

Membership of the Board will be representative of SEND stakeholders including: Parent Carer Forum, Headteachers, leaders and service managers in education and social care, public health and commissioning, healthcare and voluntary sector service leads. The SEND Partnership Board will report to the Children, Young People and Families Partnership Board as the 'parent body' which in turn reports to the Health and Wellbeing Board. A clear link with the CYP Whole System Group will be maintained. Links with other relevant Boards and Groups need to be established including a Young People's SEND Board.

The SEND Partnership Board:

- Evaluates outcomes and provision for children with SEND
- Ensures that SEND priorities are identified and represented in South Gloucestershire's SEND Strategy
- Confirms that the SEND Strategy action plan addresses the priorities of the SEND strategy
- Monitors progress on actions within the SEND strategy action plan
- Challenges and supports the achievement of actions within the SEND strategy action plan
- Reports on progress of implementation and future priorities within the first 18 months and then annually to the Directorate Leadership Team and CCG
- Maintains clear communication with Cabinet members who have an overview of SEND.



---

## FOR THE PURPOSE OF THIS DOCUMENT

---

- The term 'we' refers to those who have a key role in the lives of children and young people, and young adults with Special Educational Needs and Disabilities (SEND)
- The term 'child or children' refers to children, young people and young adults
- The term 'parents' refers to parents and carers
- Statements and Education Health and Care Plans (EHC plans) are referenced in this Strategy. Please note from March 2018 all statements will have been converted to EHC plans
- Partners refers to everyone working with the child
- When we refer to schools, in most cases, this also includes educational settings both pre-school and post 16 who are meeting the educational needs of children.