

Green Deal Research Project

July 2013

Research report prepared by:
Corporate Research & Consultation Team, South Gloucestershire Council
Tel: 01454 863990 email: research@southglos.gov.uk

1. Introduction

The Corporate Research Team has been commissioned to undertake research to identify the areas of South Gloucestershire that will be most suitable for targeting the Green Deal and future Energy Companies Obligation schemes.

A wide range of data sources relevant to household energy efficiency measures were identified, collated and analysed. This report summarises the main findings, supported by a series of detailed maps and data tables.

2. Methodology

The analysis in this report draws on data from the 2011 Census, commercial data on household income (CACI Paycheck) and the 'Warm and Well' scheme administered by the Severn Wye Energy Agency.

The datasets which inform this report are set out in Table 1:

<p>2011 Census (Office for National Statistics)</p> <p>Relevant population characteristics</p> <ul style="list-style-type: none"> • Age structure • Median age • Broad age band (65 years or over) • Unemployment <p>Household and housing characteristics</p> <p>Household tenure</p> <ul style="list-style-type: none"> • Households which are owner occupied • Households which are social rented • Households which are private rented <p>Central Heating</p> <p>Households with no central heating</p> <ul style="list-style-type: none"> • Households with gas central heating • Households with electric central heating • Households with oil central heating • Households with solid fuel central heating • Households with other types of central heating • Households with 2 or more types of central heating • 'Off Gas' households 	<p>Estimates of household income (CACI Paycheck 2013)</p> <ul style="list-style-type: none"> • Median Household Income <p>Warm and Well Scheme (Severn Wye Energy)</p> <ul style="list-style-type: none"> • Energy efficiency scheme installed • Property age
--	--

Table 1: Data Sources

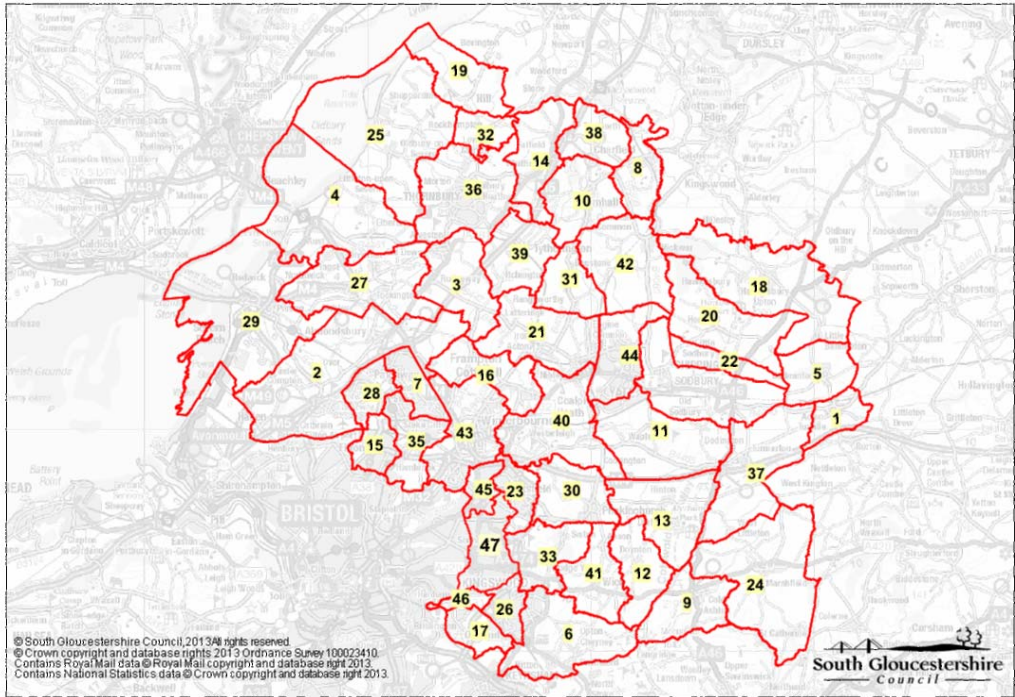
Geographical distribution

To enable detailed geographical analysis the data in this report is presented at both parish and census output area (COA) level.

Parishes: There are 46 parishes in South Gloucestershire. In addition, part of the urban area on the east fringe of Bristol is un-parished. The parish boundaries in South Gloucestershire are illustrated in Map 1.

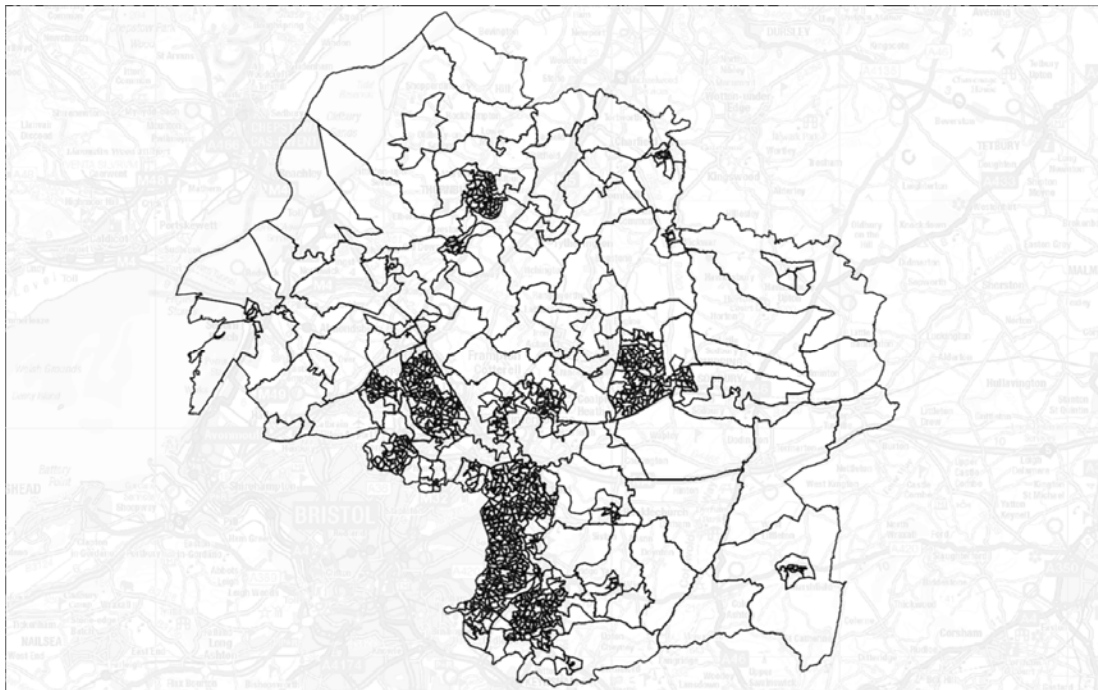
Census Output Areas (COAs): Census output areas are statistical geographies created by the ONS and are the smallest unit for which census data are published. They contain at least 40 households and 100 persons, the target size being 125 households. South Gloucestershire is divided into 834 COAs. Map2 illustrates the COA boundaries in South Gloucestershire.

Map 1- Parish boundaries in South Gloucestershire



1 Acton Turville	17 Hanham Abbots	33 Siston
2 Almondsbury	18 Hawkesbury	34 Sodbury
3 Alveston	19 Hill	35 Stoke Gifford
4 Aust	20 Horton	36 Thornbury
5 Badminton	21 Iron Acton	37 Tormarton
6 Bitton	22 Little Sodbury	38 Tortworth
7 Bradley Stoke	23 Mangotsfield Rural	39 Tytherington
8 Charfield	24 Marshfield	40 Westerleigh
9 Cold Ashton	ID Parish Name	41 Wick and Abson
10 Cromhall	25 Oldbury-upon-Severn	42 Wickwar
11 Dodington	26 Oldland	43 Winterbourne
12 Doynton	27 Olveston	44 Yate
13 Dyrham and Hinton	28 Patchway	45 Downend and Bromley Heath
14 Falfield	29 Pilning and Severn Beach	46 Hanham
15 Filton	30 Pucklechurch	47 Unparished area
16 Frampton Cotterell	31 Rangeworthy	

Map 2- Census Output Areas in South Gloucestershire



How the analysis is presented

Data has been analysed at both parish and COA level. To enable comparison between areas proportions (%) have been calculated. It should be noted that as parishes vary considerably in size (in terms of population and households) the high proportions which are displayed for some of the smaller parishes may not be large in numeric terms. COAs contain broadly contain a similar number of population / households, so proportions are less affected by large variance in the underlying count data.

Section 3 of this report summarises some of the main findings for each dataset at parish and COA level, analysis is supported by relevant maps and appendix A (which lists each COA in the district).

The maps and appendix A of in this report present the data at COA level. A colour coded scheme has been used to identify COAs with the highest and lowest concentrations of each indicator. In general, the following colour coding scheme is used - it should be noted that in certain variables with very low proportions a fewer number of classifications are used.

Colour code	Criteria
Red	Generally highest 20% of COAs (rank of proportions)
Orange	Generally highest 20-40% of COAs (rank of proportions)
Yellow	40-60% of COAs (rank of proportions)
Light Green	Generally lowest 20-40% of COAs (rank of proportions)
Dark Green	Generally lowest 20% of COAs (rank of proportions)

Table 2

A more detailed classification is set out below:

Indicator	Detail	Source	GREEN (Map & Table Code)	RED (Map & Table Code)
% Age 65 +	% of resident population age 65yrs or over	2011 Census	1. Lowest % of older people	5. Highest % of older people
Median Age	Median age of resident population	2011 Census	1. Lowest median age	5. Highest median age
% Unemployed	% of resident population age 16-74 unemployed	2011 Census	1. Lowest % of unemployed residents	5. Highest % of unemployed residents
% Owner Occupied	% households which are owner occupied	2011 Census	1. Lowest % of owner occupied households	5. Highest % of owner occupied households
% Socially rented	% households which are socially rented	2011 Census	1. Lowest % of socially rented households	5. Highest % of socially rented households
% Private rented	% households which are privately rented	2011 Census	1. Lowest % of privately rented households	5. Highest % of privately rented households
% No central heating	% households with no central heating	2011 Census	1. Lowest % of households with no central heating	5. Highest % of households with no central heating
% Gas central heating	% households with gas central heating	2011 Census	1. Highest % of households with gas central heating	5. Lowest % of households with gas central heating
% Electric central heating	% households with electric central heating	2011 Census	1. Lowest % of households with electric central heating	5. Highest % of households with electric central heating
% Oil central heating	% households with oil central heating	2011 Census	1. Lowest % of households with oil central heating	5. Highest % of households with oil central heating
% Solid fuel central heating	% households with solid fuel central heating	2011 Census	1. Lowest % of households with solid fuel central heating	5. Highest % of households with solid fuel central heating
% Other central heating	% households with other types of central heating	2011 Census	1. Lowest % of households with other central heating	5. Highest % of households with other central heating
% 2 or more types of central heating	% households with 2 or more types of central heating	2011 Census	1. Lowest % of households with 2 or more types of central heating	5. Highest % of households with 2 or more types of central heating
% 'off gas' households	Households with: No Central Heating + Electric Central Heating + Oil Central Heating + Solid Fuel Central Heating + Other Central Heating	2011 Census	1. Lowest % of 'off gas' households	5. Highest % of 'off gas' households
Median Household Income (£)	Median household income	CACI Paycheck 2013	1. Highest median income	5 Lowest median income

Table 3

3. Analysis

Characteristics of the local population – 2011 Census

This section outlines some of the key characteristics of South Gloucestershire’s population related to the age structure and unemployment. All data is derived from the 2011 Census.

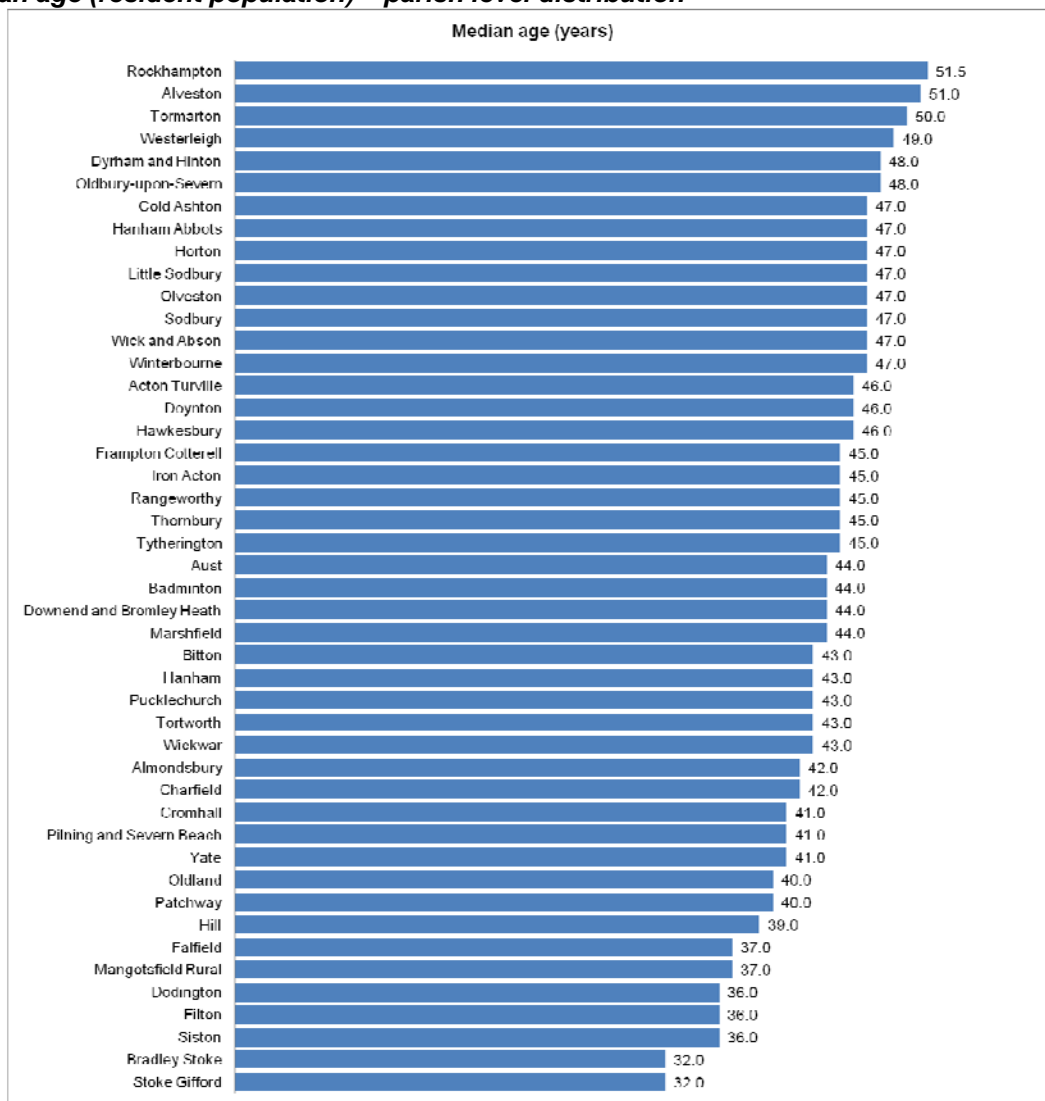
Age structure - Median age

The median (middle) age of the population is a useful statistic because it provides a single number to describe the age of the resident population.

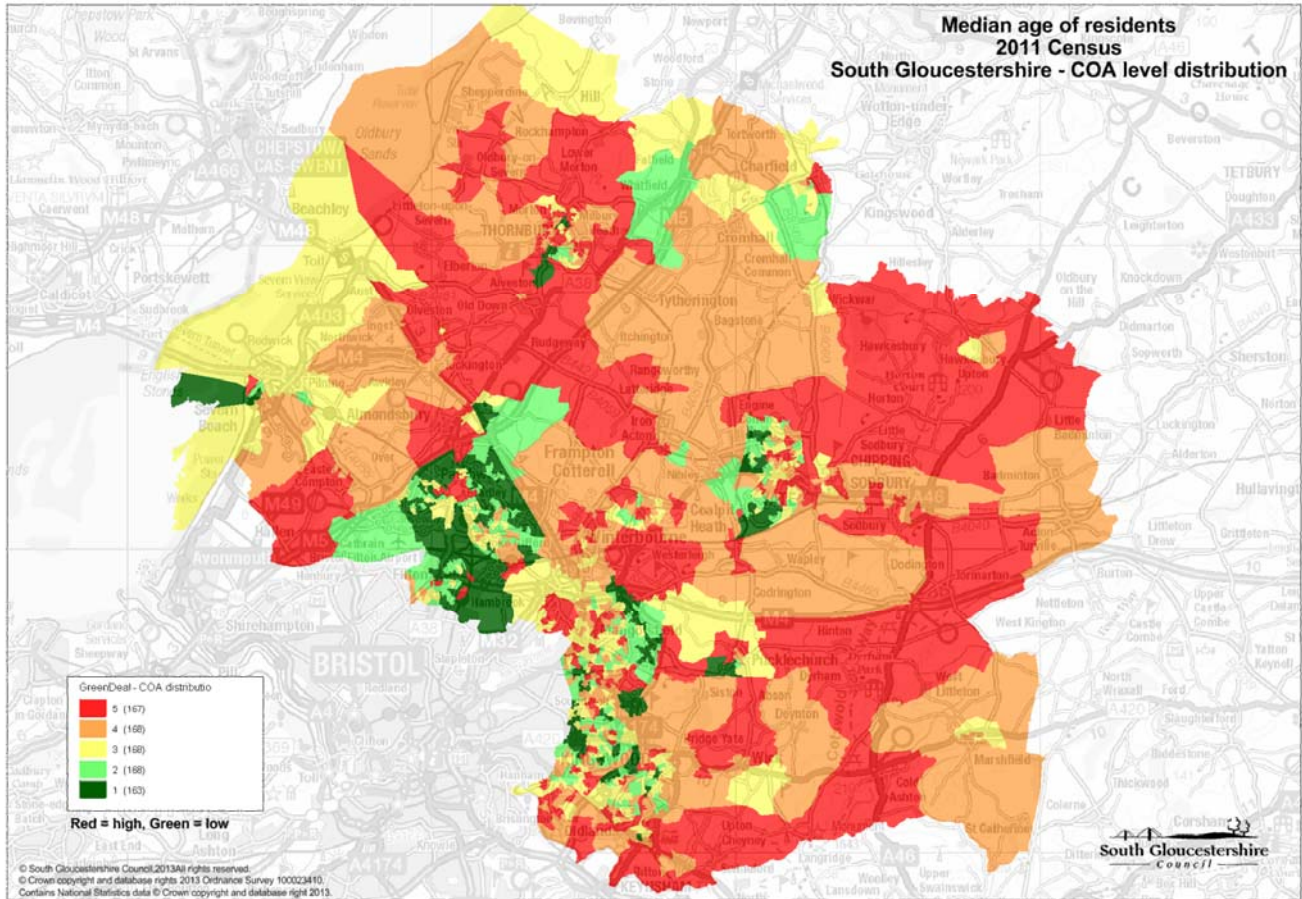
The median age of South Gloucestershire’s population is 40.0 yrs - higher than the England & Wales average of 39.0 yrs. At parish level, Rockhampton has the highest median aged population (51.5yrs), whilst Stoke Gifford and Bradley Stoke have the lowest (both 32yrs).

At COA level, parts of Westerleigh, Bradley Stoke and Filton have the highest median aged population (over 68 years); particularly high concentrations of older people occur in these COAs because of the location of ‘park home’ sites or residential care homes within these areas. In contrast, the COAs with the youngest median age (19 years) are located adjacent to the University of the West of England Frenchay campus (student accommodation). Areas of Siston Hill and the New Cheltenham area of Kingswood also have young median aged populations (below 26yrs).

Fig 1: Median age (resident population) – parish level distribution



Map 3. Median age – COA level distribution

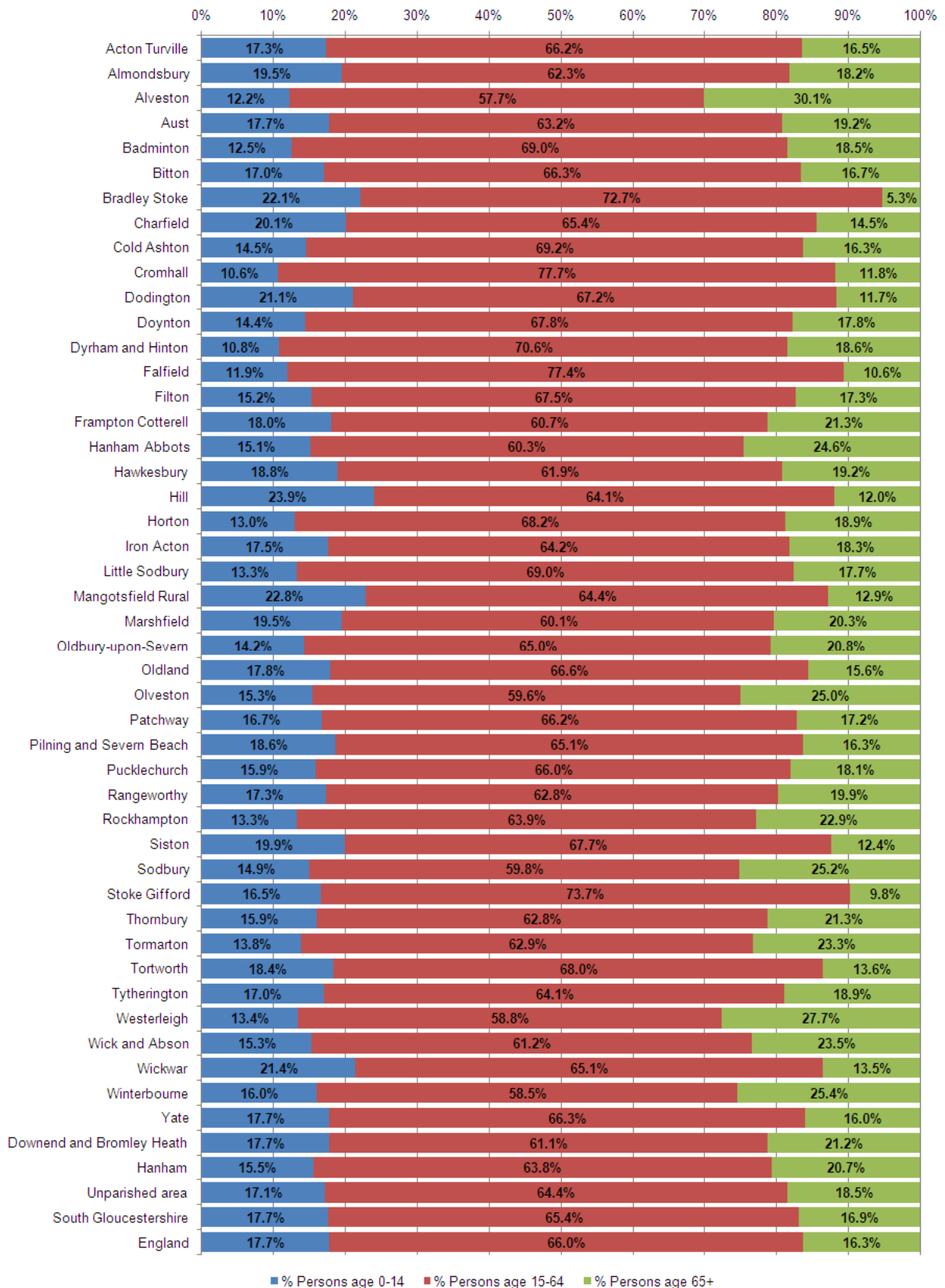


Population age structure (proportion of older people 65+)

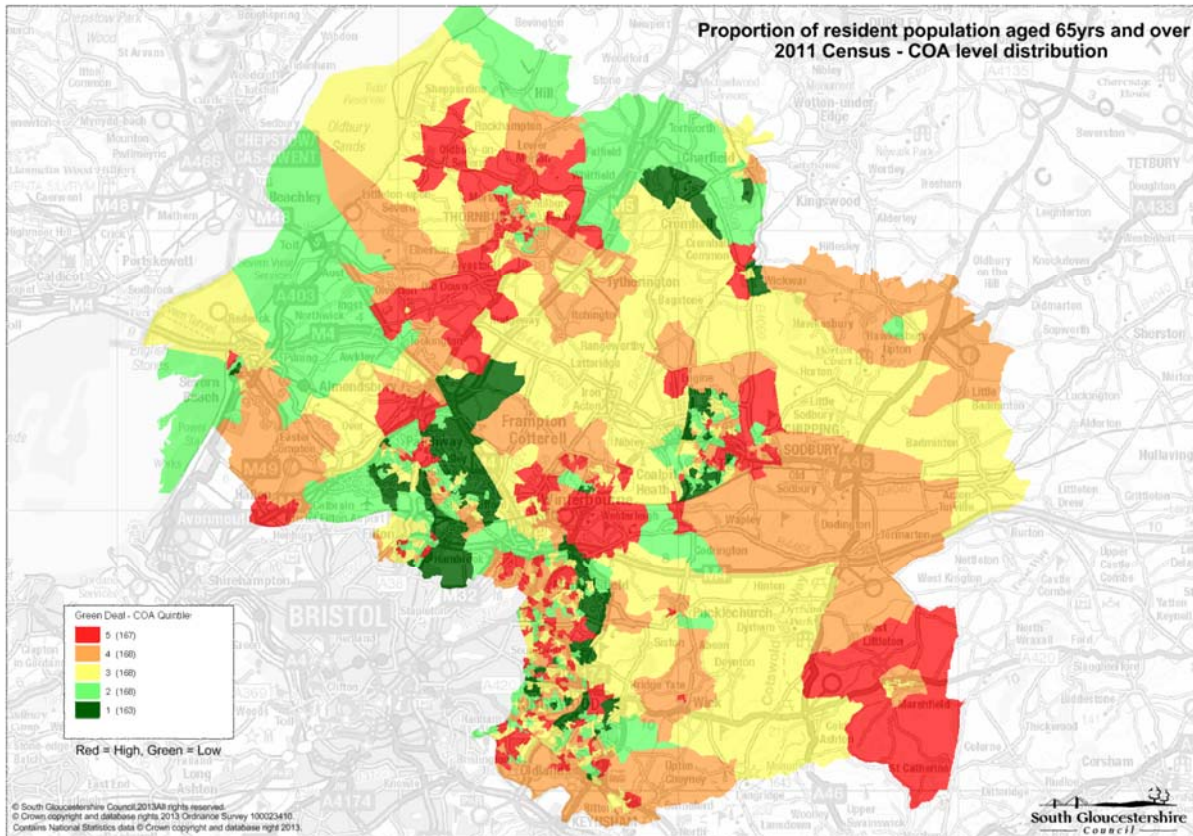
According to the 2011 Census, 44,409 (16.9%) of South Gloucestershire’s resident population are aged 65 or over. Analysis at parish level shows that: Alveston (30.1%), Westerleigh (27.7%), and Winterbourne (25.4%) have the highest proportion of older people; whilst Bradley Stoke (5.3%), Stoke Gifford (9.8%) and Falfield (10.6%) have the lowest proportion of residents in this age band (Fig 2).

Analysis of the data at COA level shows that in areas within Filton, Westerleigh, Emersons Green and Bradley Stoke more than half the resident population are aged 65 yrs or over. The location of ‘park homes’ or residential care homes in these COAs explains this distribution.

Fig 2. Broad age structure – South Gloucestershire parishes



Map 4: Proportion of resident population aged 65yrs and over – COA level distribution



Unemployment (age 16-74)

In March 2011, 5,354 of South Gloucestershire’s residents (2.8% of the population aged 16-74) were unemployed, a figure which is considerably lower than the National (England & Wales) average of 4.4%. It should be noted that the unemployment rate generated by the census differs from other measures of unemployment; notably the Job Seekers Allowance (JSA) Claimant Rate (2.1% at the time of the census) and the ONS modelled estimates of unemployment (5.2% at the time of the census) (Fig 3). However the census provides the only estimate of unemployment at COA level - so is the only measure which is geographically comparable to the other variables in this study.

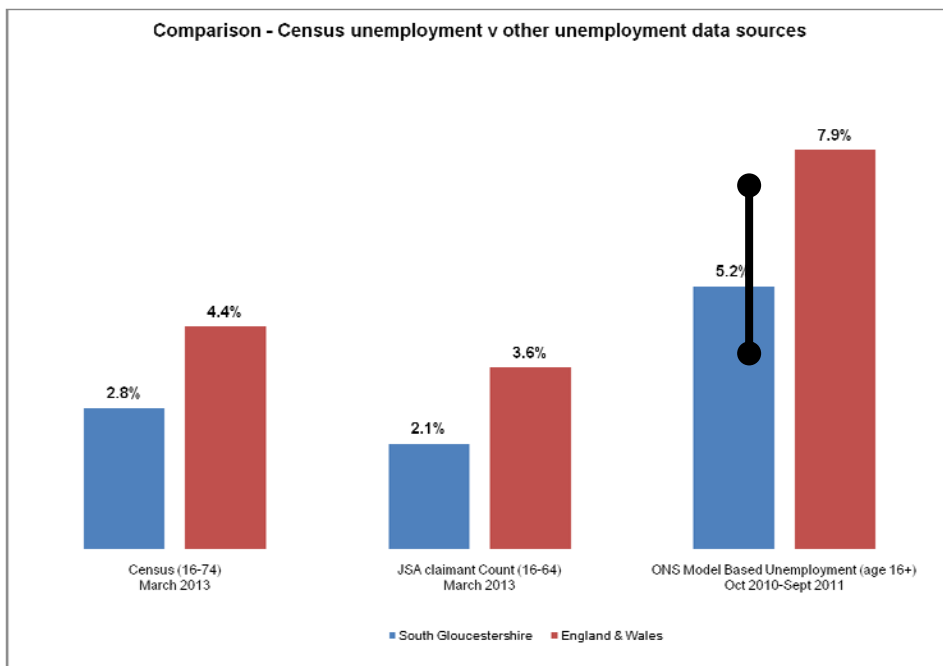
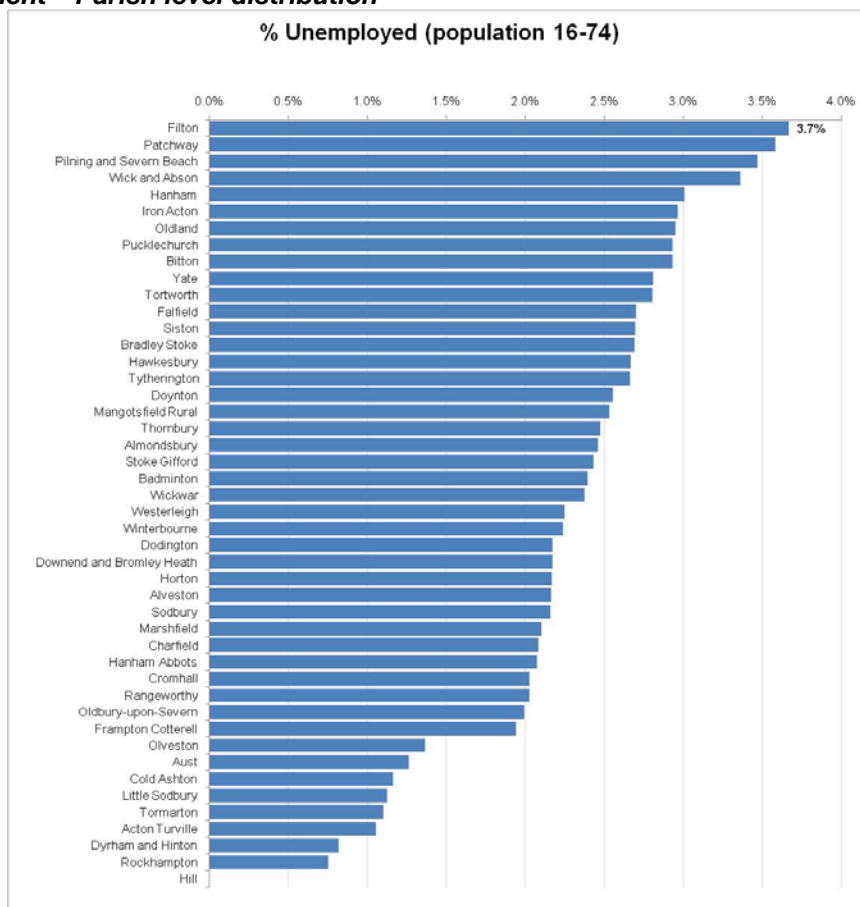


Fig 3. 2011 Census v other sources of unemployment data

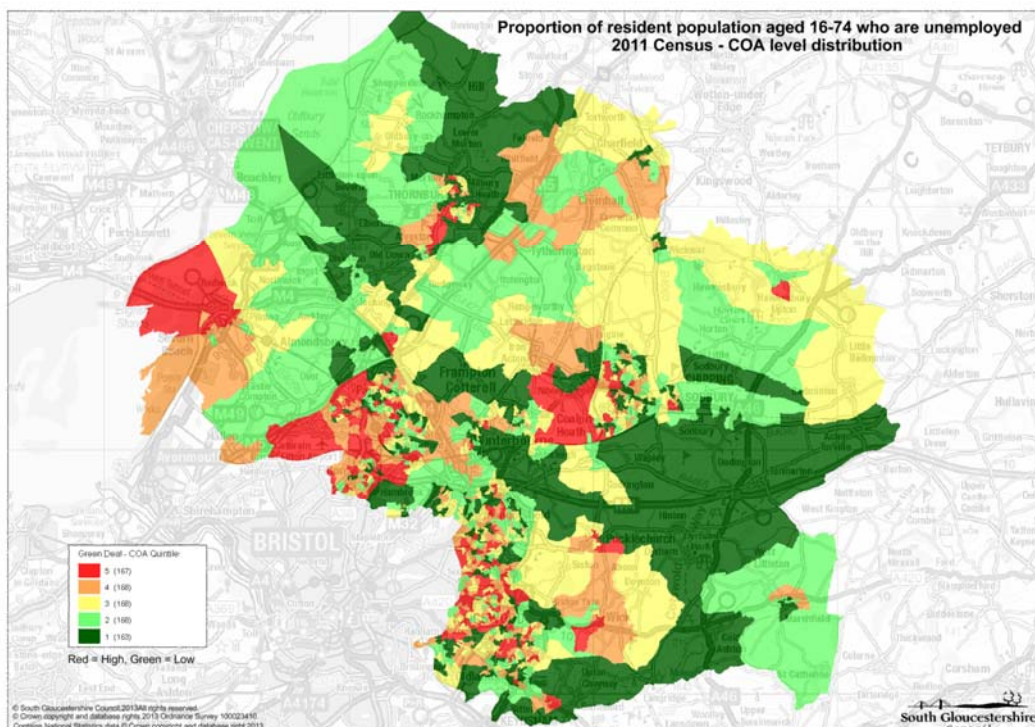
Analysis of the census unemployment data by parish shows that: Filton (3.7%), Patchway (3.6%) and Piling and Severn Beach (3.5%) were the parishes with the highest level of unemployment. In contrast, no residents in Hill parish were unemployed.

Analysis at COA level shows that there are areas within Filton, Stoke Gifford, Staple Hill and Yate North with unemployment levels in excess of 10%.

Fig 4. Unemployment – Parish level distribution



Map 5: Unemployment – COA level distribution



Household Characteristics – 2011 Census

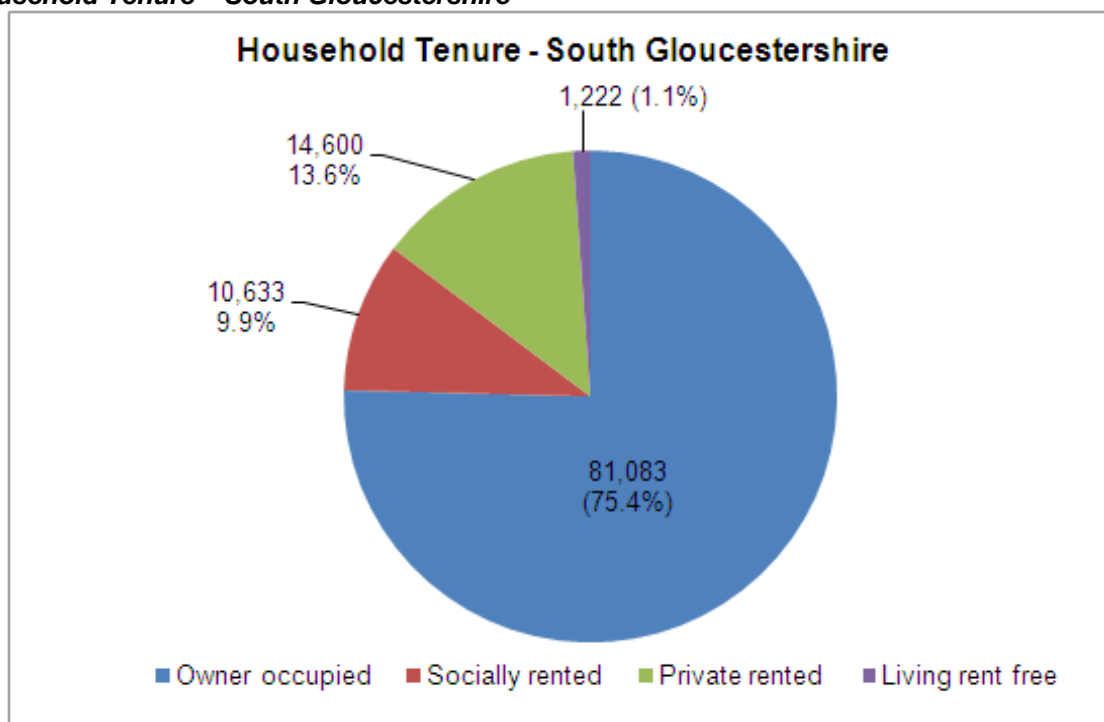
Total households

On Census day, the total number of households with at least one usual resident (i.e. occupied households) in South Gloucestershire was 107,538. Yate (8,855), Bradley Stoke (8,434) and Oldland (6,390) were the parishes with the largest number of households, whereas Hill (42), Little Sodbury (51) and Tortworth (53) had the fewest.

Household tenure

Three quarters of households in South Gloucestershire were owner occupied, ten percent were rented from social landlords, and around fourteen percent (14,600) were privately rented. Interestingly, over the past decade, the number of privately rented households in the district has increased from 5,500 to 14,600 (an increase of 164%).

Fig 5. Household Tenure – South Gloucestershire



As explained earlier, analysis at parish level is skewed by the large variation in the number of households between parishes. Overleaf, Fig 6 illustrates the total number of households by parish, whilst Fig 7 illustrates the proportional split by tenure.

Fig 6. Households – parish level distribution – numbers

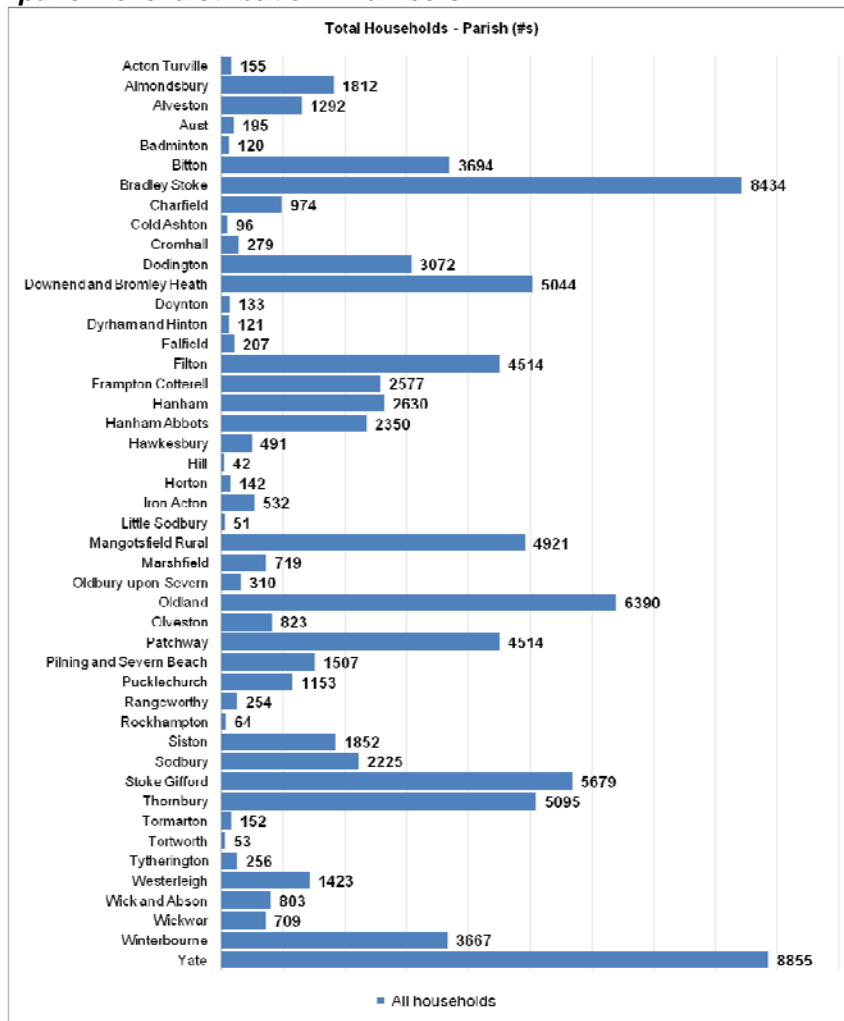
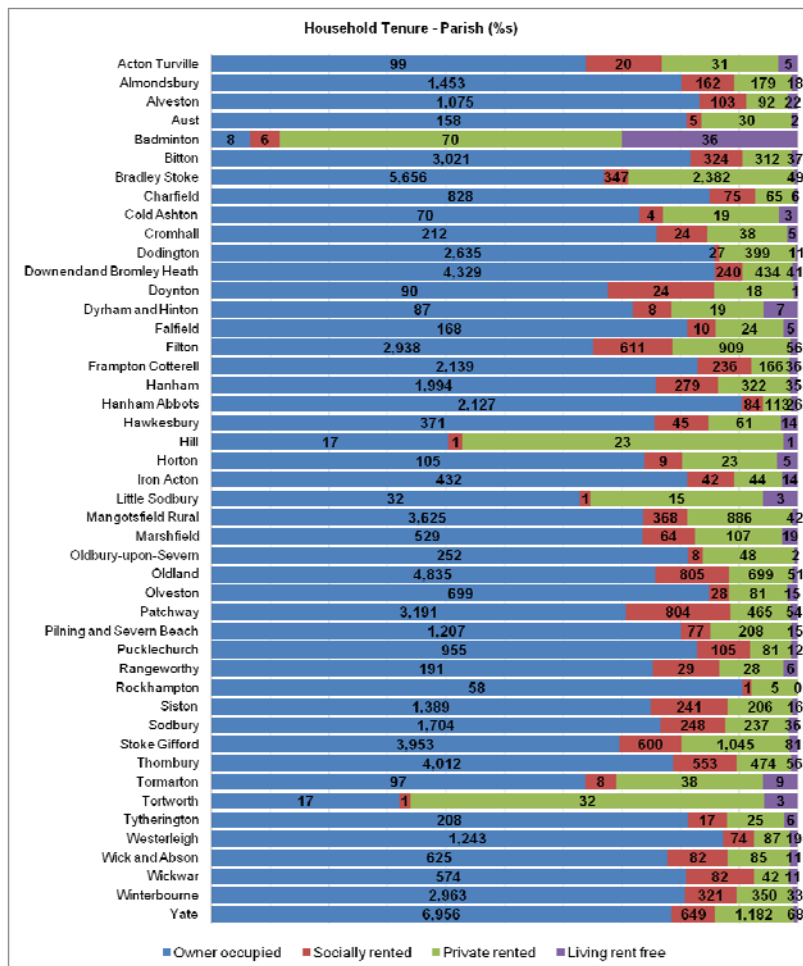


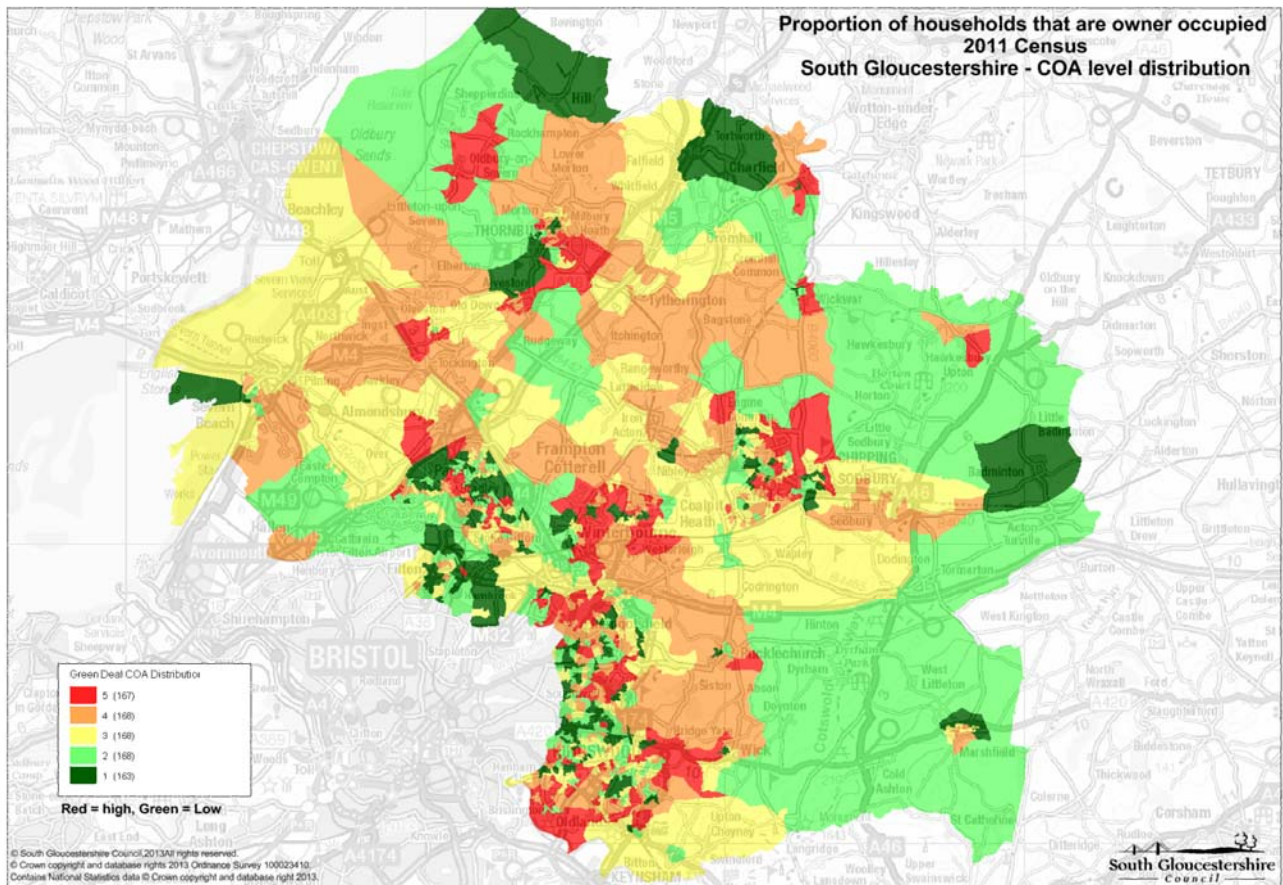
Fig 7. Household tenure – parish level distribution - proportional split



Owner occupiers: At parish level; Rockhampton (90.6%) and Hanham Abbots (90.5%) have the highest proportions of owner occupiers, whereas Badminton (6.7%) and Tortworth (32.1%) have the lowest. In numeric terms, Yate has the highest number of owner occupied household (6,956), followed by Bradley Stoke (5,656). Badminton has the lowest number (8).

Analysis at more detailed COA level shows that there are numerous areas in the district where almost all households are owner occupiers; in contrast there is one COA around Badminton where fewer than 7% of households are owner occupiers.

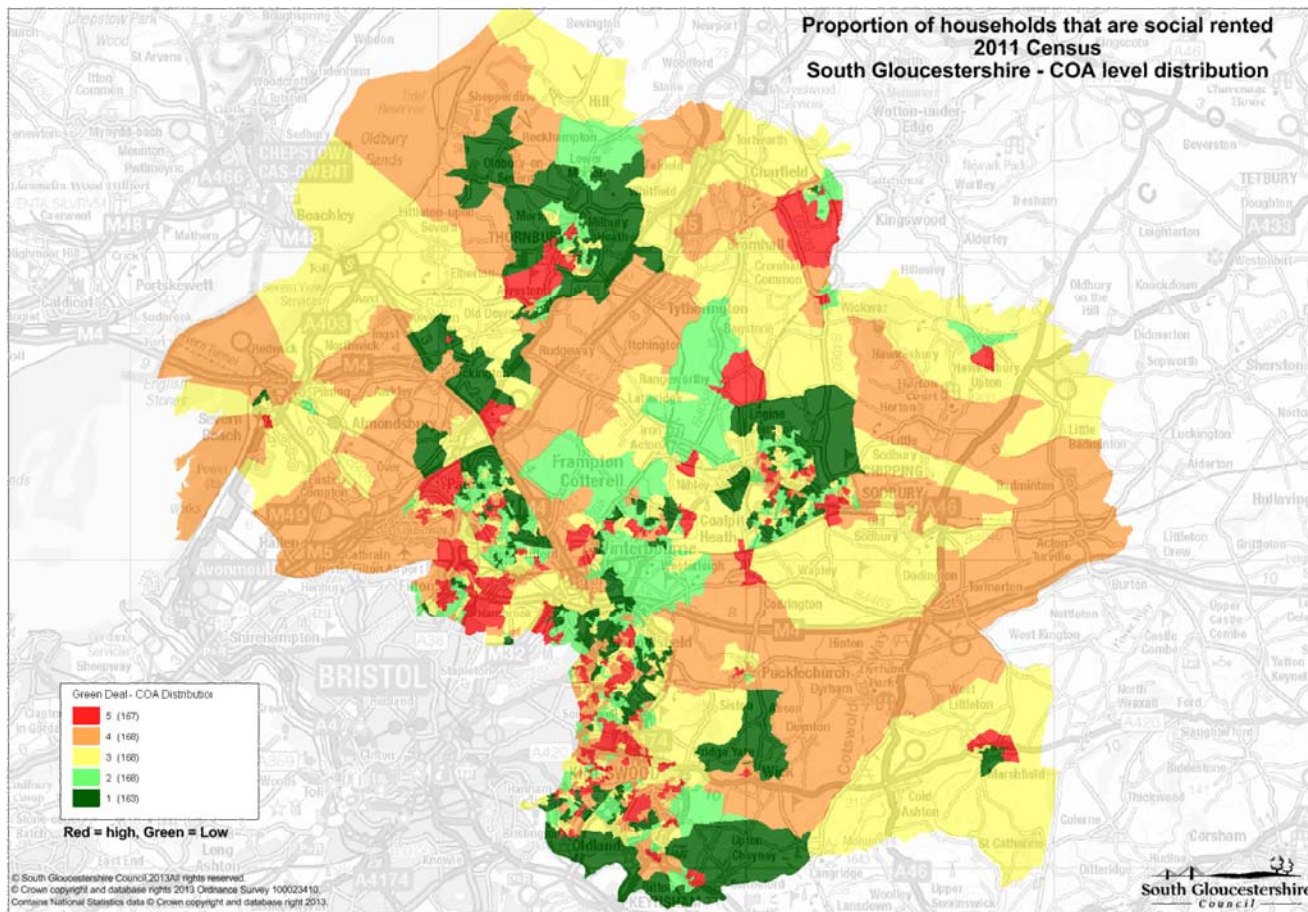
Map 6. Proportion of households that are owner occupied – COA level distribution



Rented from a Social landlord: At parish level; Doynton (18.0%) and Patchway (17.8%) have the largest proportion of households who live in socially rented accommodation, whilst Dodington (0.9%) and Rockhampton (1.6%) have the lowest. In numeric terms Oldland is the parish with the highest number of households who rent from a social landlord (805).

Analysis at more detailed COA level (Map 7) illustrates that there are areas of Bradley Stoke, Stoke Gifford, Staple Hill, Filton and Emersons Green where over 80% of households live in socially rented accommodation; in contrast there are 122 COAs in South Gloucestershire which contain no socially rented accommodation.

Map 7. Proportion of households that are social rented – COA level distribution

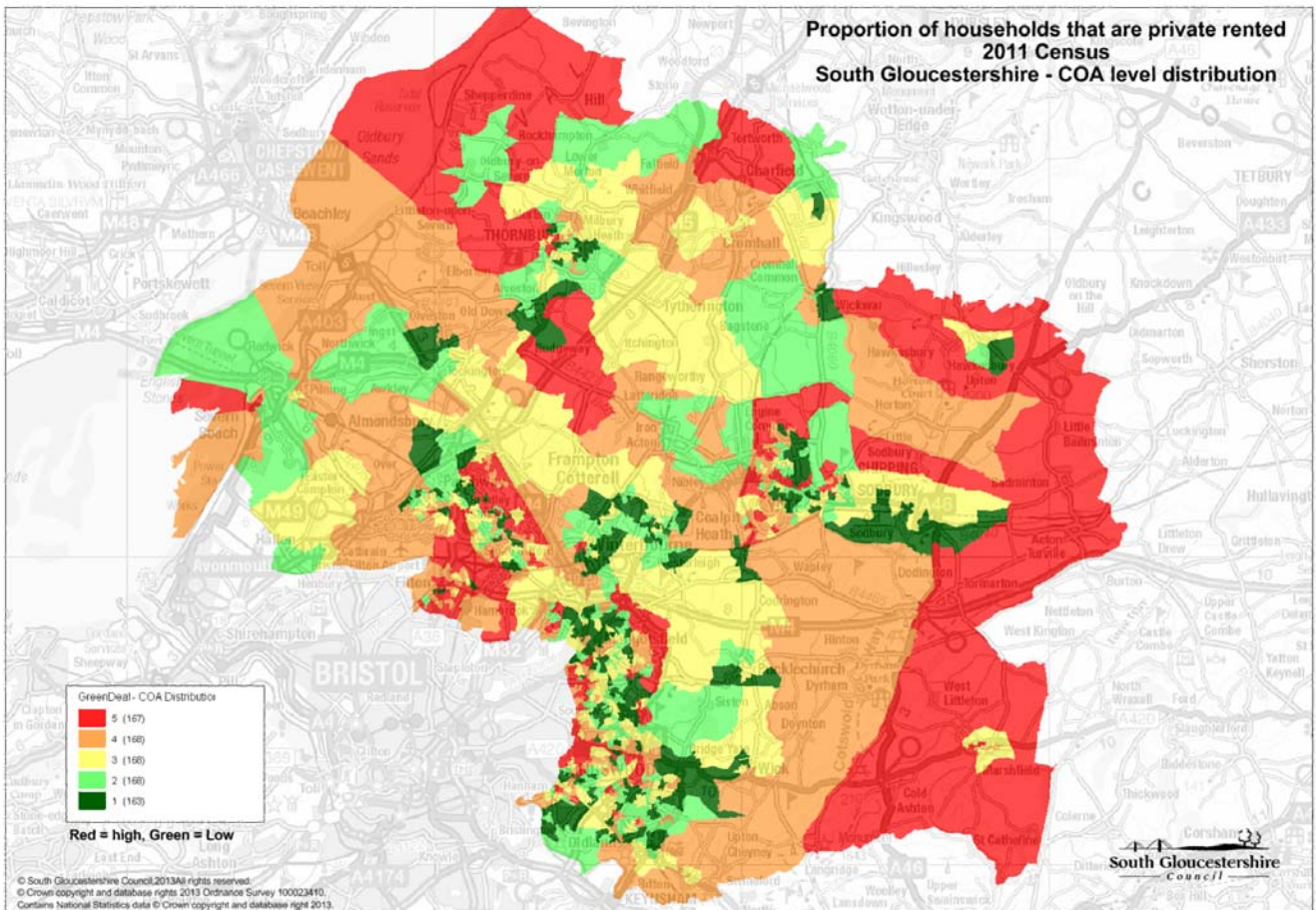


Privately rented

At parish level; Tortworth (60.4%), Badminton (58.3%) and Hill (54.8%) have the largest proportion of households who live in privately rented accommodation, whilst Hanham Abbots (4.8%), Wickwar (5.9%) and Westerleigh (6.1%) have the lowest.

Analysis at more detailed COA level shows that there are COA's in areas of Emersons Green, Frenchay and Stoke Park and Bradley Stoke where over two thirds of households live in privately rented accommodation. Interestingly, there are other areas of Emersons Green where there is no privately rented accommodation.

Map 8. Proportion of households that are privately rented – COA level distribution



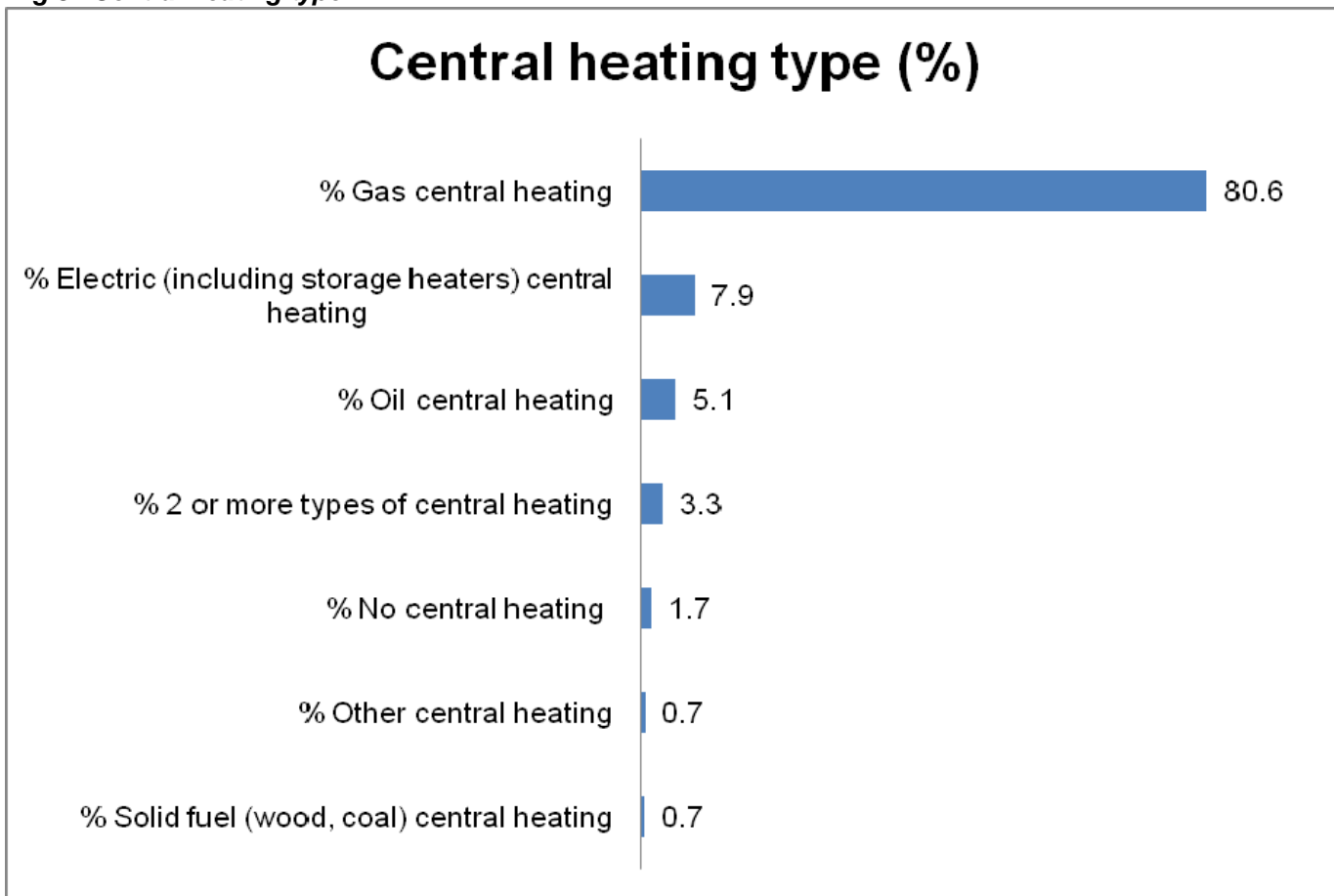
Living rent free

Thirty percent of households in Badminton (36 households) live rent free. It is likely that many of these householders are employees of the Badminton Estate (the Duke of Beaufort).

Central Heating type

The census provides the most comprehensive data on the type of central heating used by households. In South Gloucestershire, over 80% of households have gas central heating, whilst around 8% have electric central heating. Around 1,800 households (1.7%) do not have central heating. Fewer than 21,000 households – about one fifth of all households in the district - are estimated to be 'Off Gas'¹.

Fig 8. Central heating type



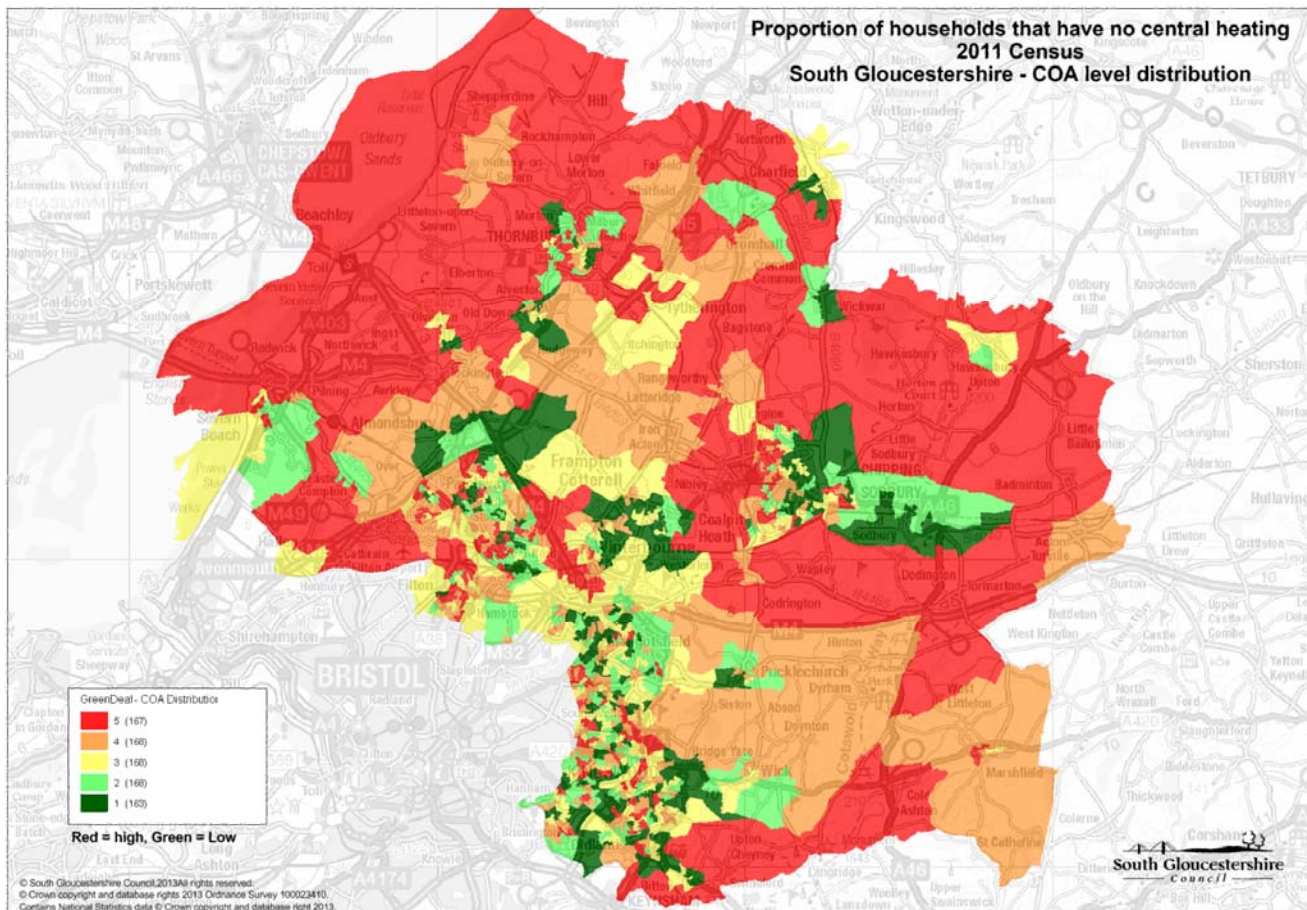
¹ 'Off gas' households are defined by aggregating the following categories of household data: No central heating, Electric (including storage heaters) central heating, Oil central heating, Solid fuel (wood, coal) central heating, Other central heating,

Households with no central heating

The parishes with the largest proportion of households with no central heating are Little Sodbury (11.8%) and Tortworth (7.5%). Yate (206) and Bradley Stoke (158) are the parishes with the highest number of households without central heating.

At more detailed COA level, the highest proportions can be found in areas of Chipping Sodbury, Bradley Stoke and Dodington, where over one in ten households do not have central heating. In over three quarters of COAs, all households have some form of central heating.

Map 9. Proportion of households that have no central heating – COA level distribution

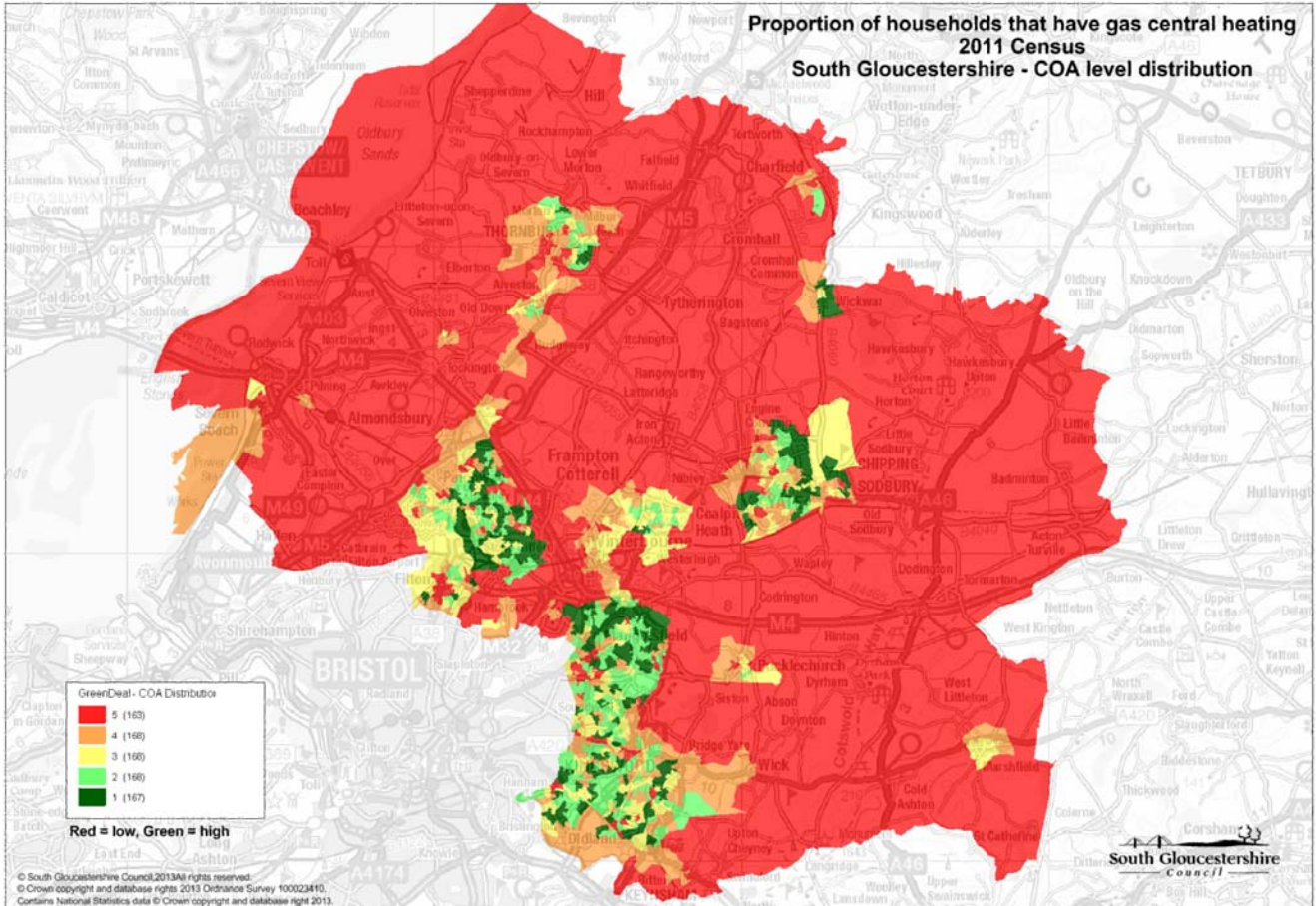


Gas central heating

The parishes with the highest proportion of households with gas central heating are Mangotsfield Rural (90.6%) and Downend & Bromley Heath (89.8%), whilst the parishes with the highest number of households with gas central heating are Yate (7,485) and Bradley Stoke (7,196).

In many COAs (usually in areas with more modern housing developments) all households have gas central heating.

Map 10. Proportion of households that have gas central heating – COA level distribution



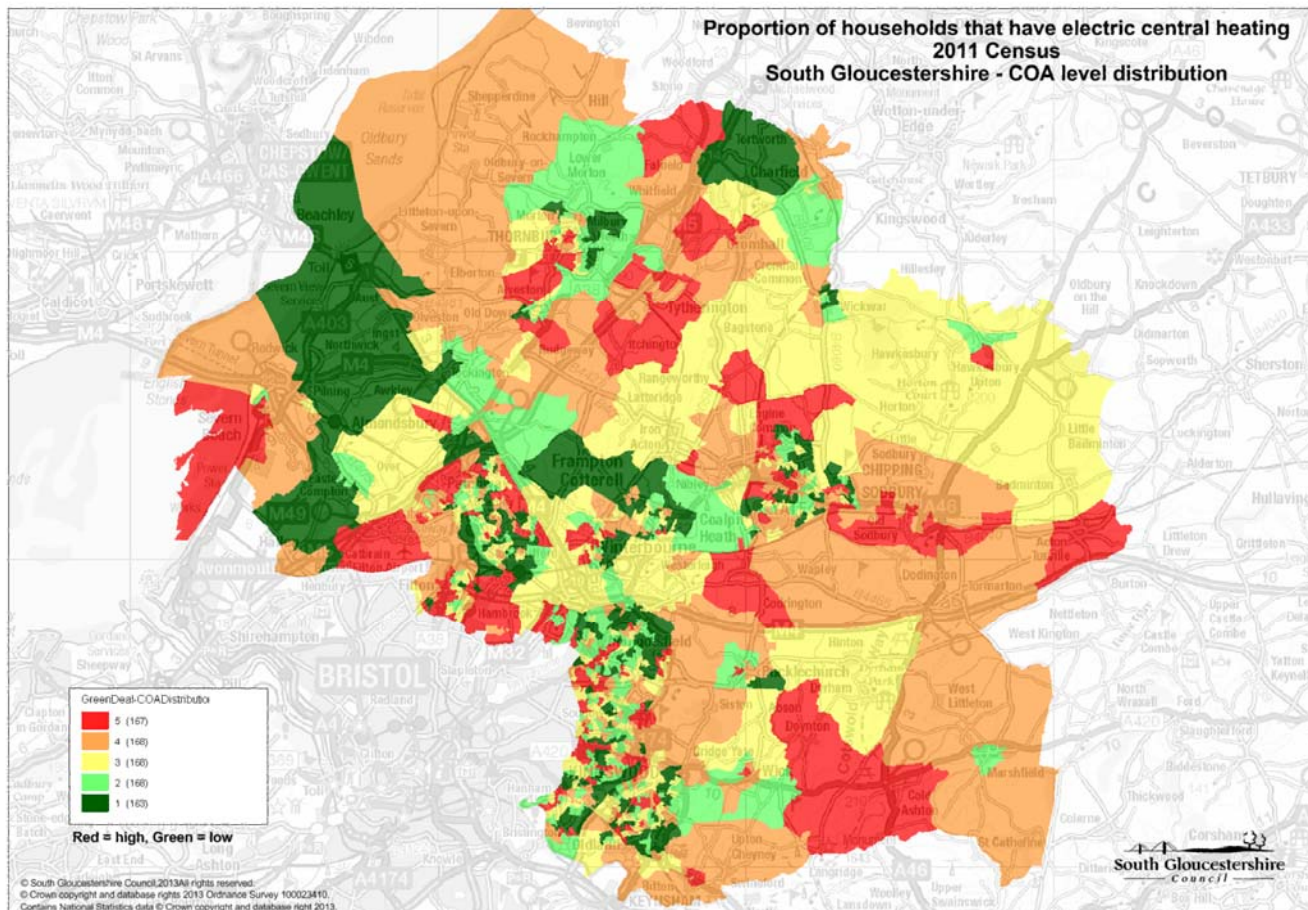
Note change in key:

- Red = Lowest proportions of households with gas central heating
- Green = Highest proportions of households with gas central heating

Electric central heating (including storage heaters)

The parishes with the highest proportion of households with electric central heating are Doynton (23.3%) and Rangeworth (21.3%), whilst the parishes with the highest number are Bradley Stoke (856) and Yate (832). At COA level, the highest proportions can be found in areas of Siston and Dodington, where over 80% of households have electric central heating.

Map 11. Proportion of households that have electric central heating – COA level distribution

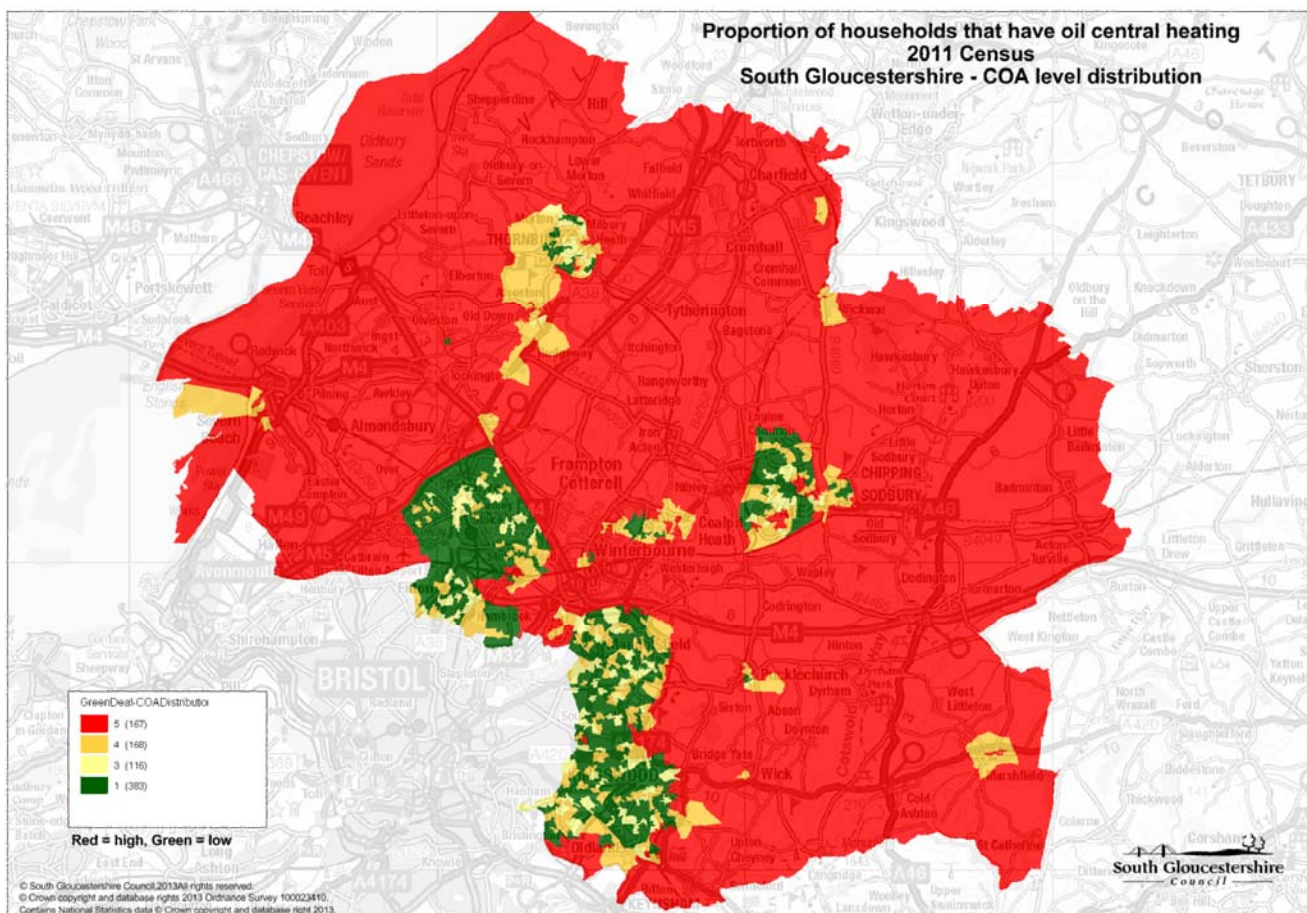


Oil Central heating

At parish level, the highest proportion of households with oil central heating are Dyrham & Hinton (70.2%) and Cold Ashton (67.7%), whilst the parishes with the highest number are Almondsbury (467), Winterbourne (366) and Hawkesbury (318).

At more detailed COA level, the highest proportions can be found in areas of Cotswold Edge, Boyd Valley and Ladden Brook, where over two thirds of households have oil central heating. Map 12 illustrates that the highest proportion of households with oil central heating are located in the rural areas of the district.

Map 12. Proportion of households that have oil central heating – COA level distribution

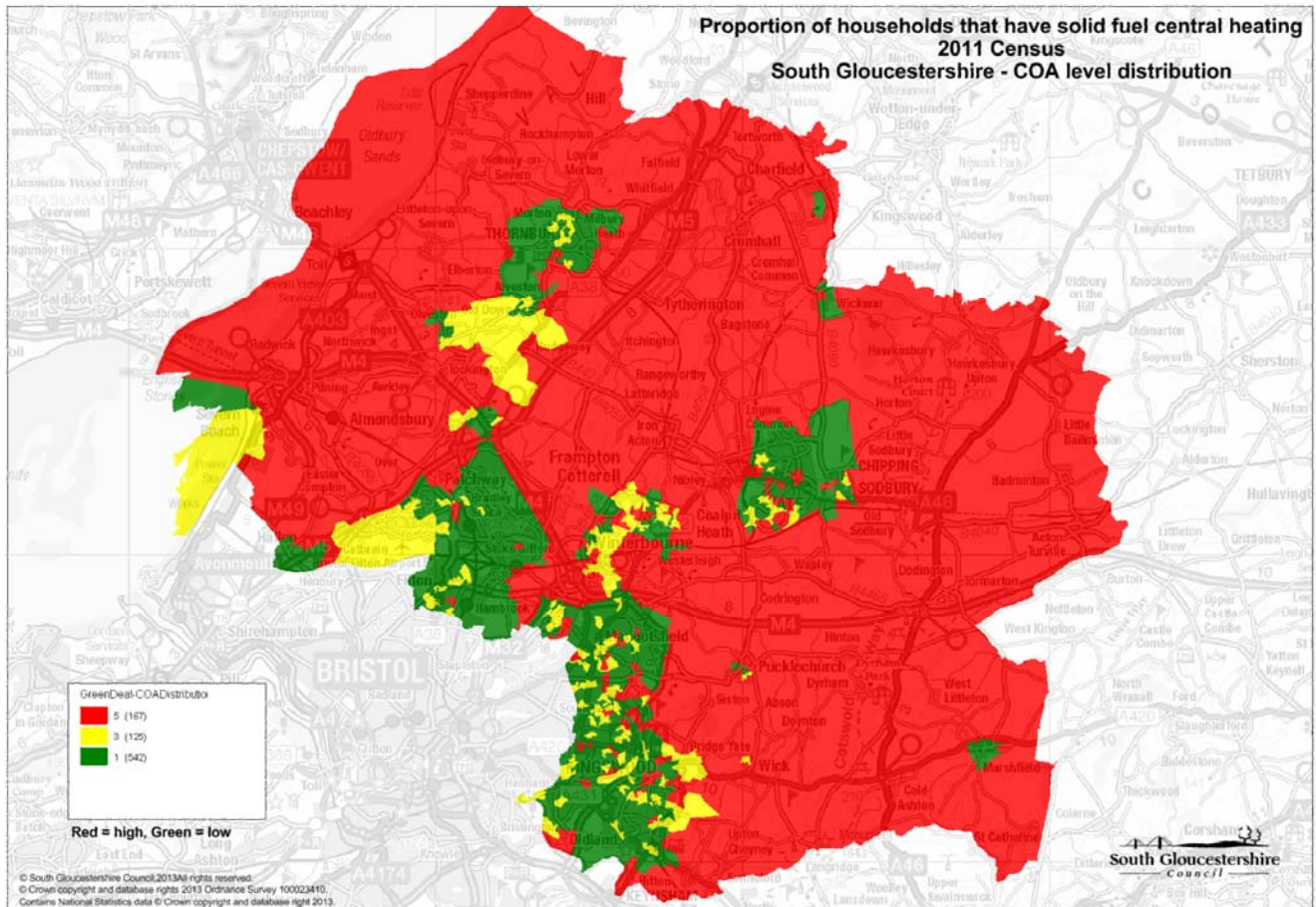


Solid fuel central heating

At parish level, the highest proportions of households with solid fuel central heating are Little Sodbury (7.8%), Hill (7.1%) and Tytherington (6.3%).

At more detailed COA level, the highest proportions can be found in areas of Boyd Valley, where over 10% of households have solid fuel central heating.

Map 13. Proportion of households that have solid fuel central heating – COA level distribution

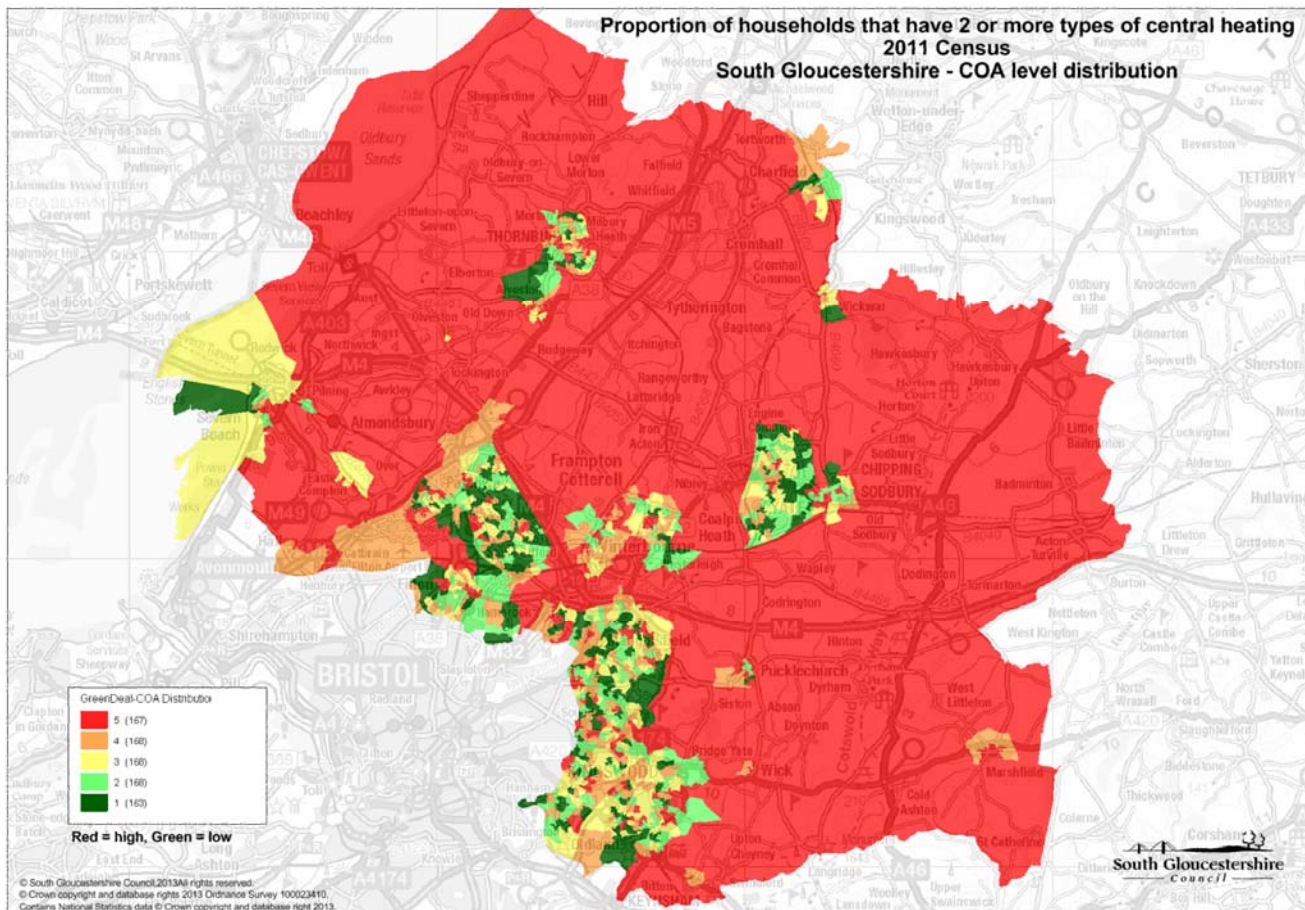


Two or more types of central heating

At parish level, the highest proportions of households with two more types of central heating are Little Sodbury (17.6%), Hill (16.7%) and Badminton (15.8%).

At more detailed COA level, the highest proportions can be found in areas of Frampton Cotterell and Ladden Brook, where around a fifth of households have two or more types of central heating.

Map 14. Proportion of households that have 2 or more types of central heating – COA level distribution

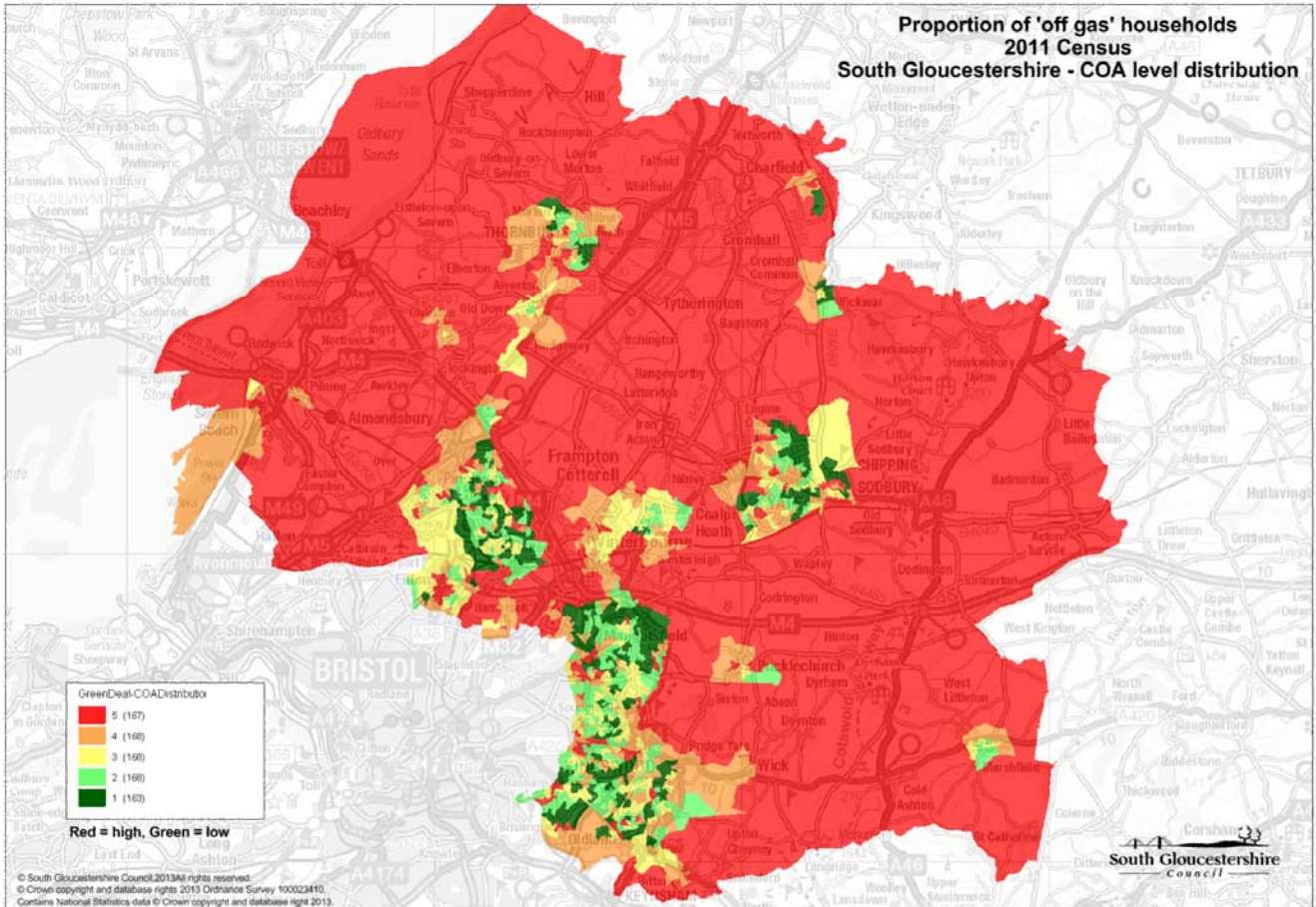


'Off-gas' households

For the purpose of this measure 'off-gas' households are defined by aggregating the following categories: No central heating, electric (including storage heaters) central heating, oil central heating, solid fuel (wood, coal) central heating, and other central heating.

Map 15 illustrates that 'off gas' households are more prevalent in the rural areas of the district. At parish level, for example, over 80% of households in Cold Ashton, Rangeworthy, Dryham and Hinton, Doynton, Horton, and Badminton are 'off-gas'. However at COA level, some of the highest concentrations of 'off-gas' households are in relatively modern housing estates in more urban areas, for example the Abbotswood area of Dodington, Yate (E00075271) where 94% of households are 'off-gas'.

Map 15. Proportion of 'off gas' households – COA level distribution



Household Income – CACI Paycheck 2013

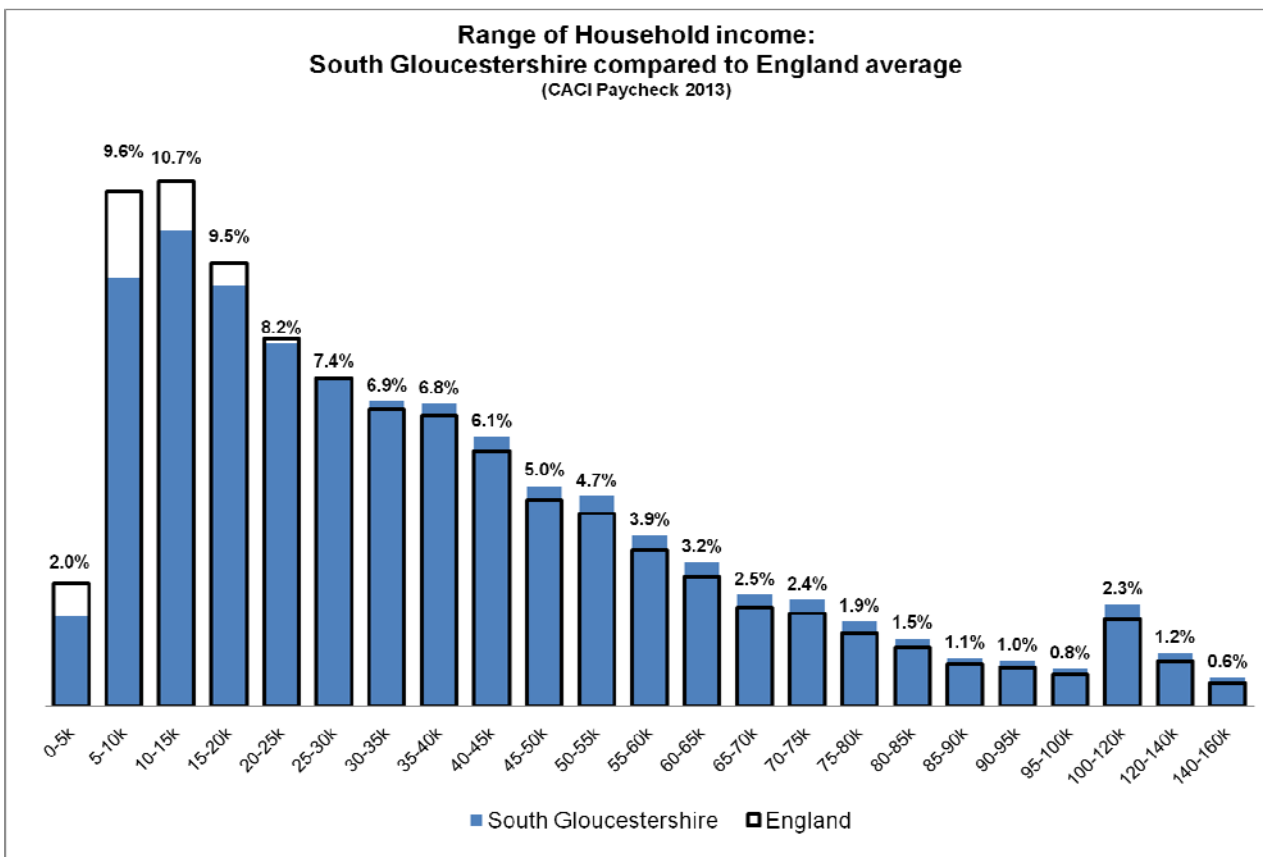
Data in this section is derived from the 'Paycheck' system, which is managed by the private sector consultancy group CACI Ltd. Paycheck provides modelled estimates of gross household income on a postcode basis. The estimates include pre-tax income from all sources including; earnings, investment income and welfare payments.

The Paycheck system is created using information from millions of households collected from lifestyle surveys, guarantee cards and census data. Because of commercial confidentiality, the actual data sources and assumptions that underpin the model are unknown; however analysis of the figures for South Gloucestershire suggests that the data are generally plausible.

Key findings for South Gloucestershire

The median household income in South Gloucestershire is £31,900, higher than the equivalent national (England) income of £28,800.

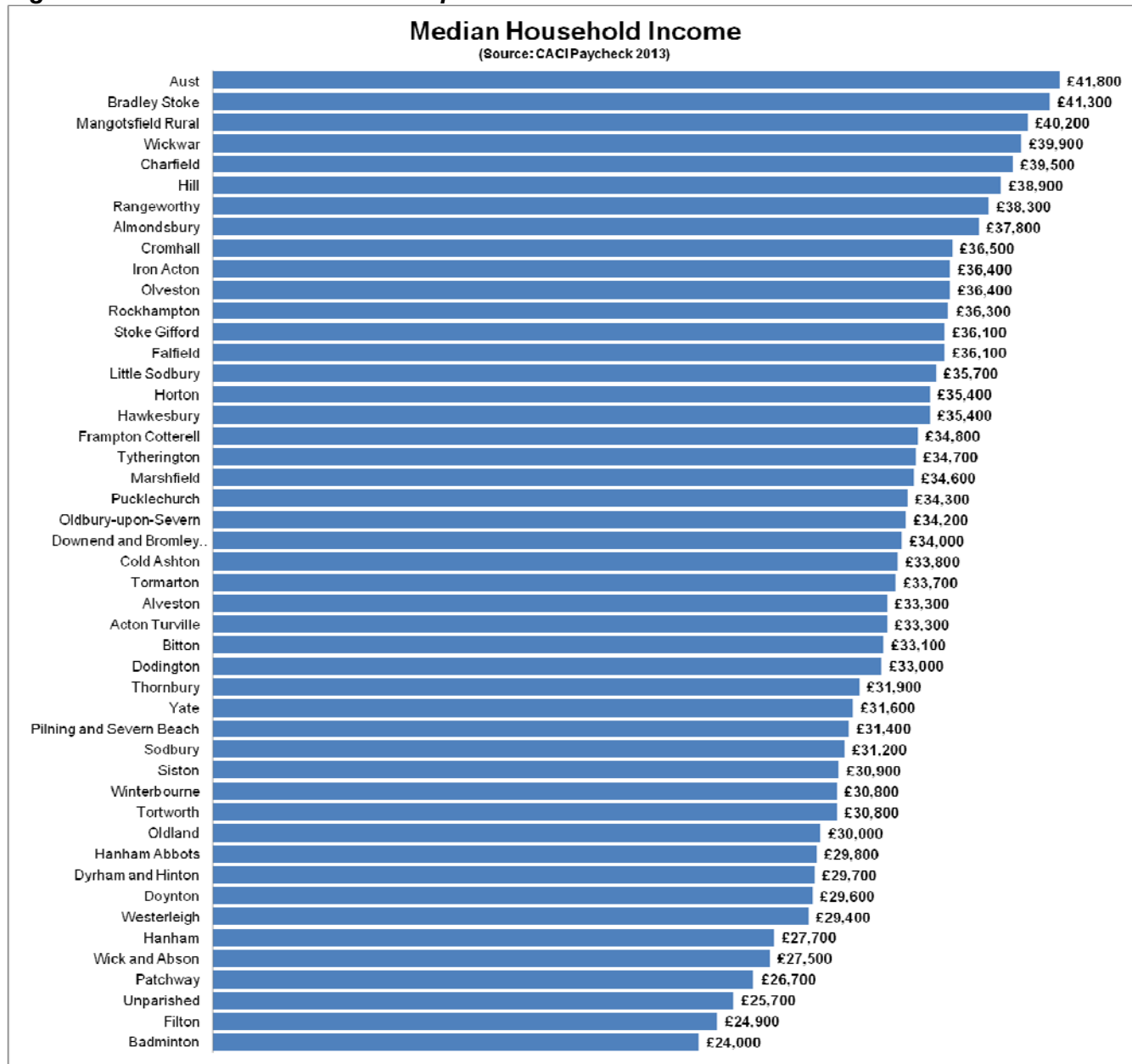
Fig 9. Range of household income in South Gloucestershire



Parish level analysis

The parishes with the highest median household income are: Aust (£41,800), Bradley Stoke (£41,300) and Mangotsfield Rural (£40,200). In contrast, the parishes with the lowest median household income are: Badminton (£24,000) and Filton (£24,900). The un-parished area in the Bristol East Fringe also has one of the lowest median household incomes (£25,700).

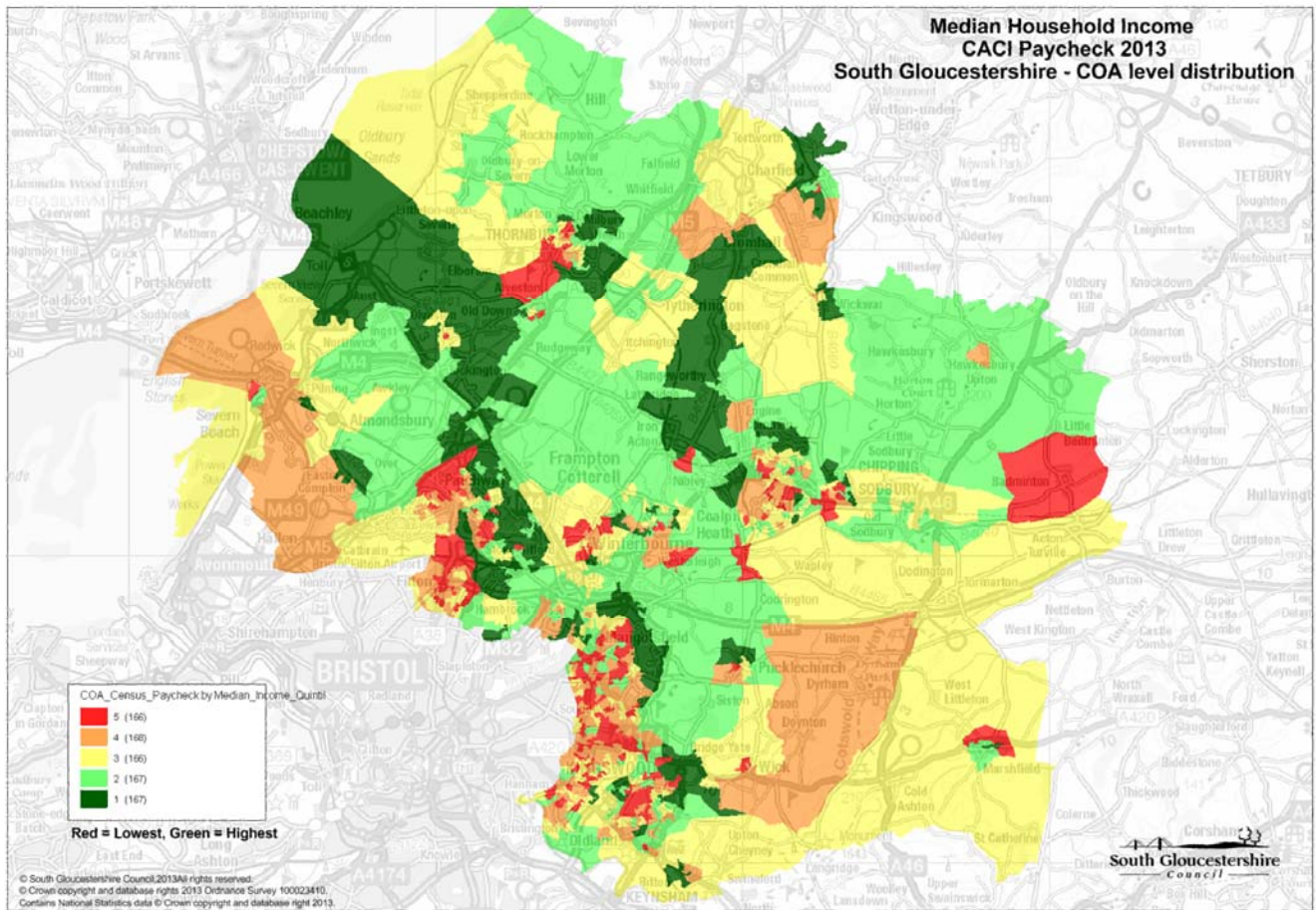
Fig 10. Median household income – parish level



COA level analysis

Spatial analysis of household income at census output area level reveals the broad range of household incomes in South Gloucestershire. Map 16 illustrates the wide distribution of incomes across the district. It shows that the COAs with the highest median household income levels are in areas of Wickwar and Bradley Stoke, whilst some of the COAs with lowest median household incomes are found within the older urban areas in the north and east fringes of Bristol.

Map 16. Distribution of median household income – COA level



Warm and Well Dataset – Severn Wye Energy Agency

Introduction

The Warm and Well advice line is managed by Severn Wye Energy Agency, a local charity and non-profit company. The charity has been providing free impartial energy advice to local households in the south west of England for over 10 years.

Over the past decade, Severn Wye Energy Agency has established a large database of the energy efficiency measures provided to households in the South Gloucestershire area (6,405 records). A depersonalised extract of this dataset has been provided to the Council to inform this project. This section of the report provides a summary analysis of this dataset.

Data processing

Prior to data analysis it was necessary to 'clean' the data. This process involved:

- Identification (and removal of) records which were not within South Gloucestershire or had insufficient postcode information to enable mapping (402 records).
- Identification and removal (where necessary) of households which received more than one energy efficiency measure (1,297 records). There were 4,706 unique property records on the database (i.e. 4,706 households had received energy advice about one or more measures).

Classification	Count
Total records provided by warm & well	6,405
Records not within South Gloucestershire or unable to map due to incomplete postcodes	402
Total records within South Gloucestershire (inc. duplicates)	6,003
Households receiving more than one measure	1,297
Unique property records in South Gloucestershire	4,706

Table 4. Summary of Warm & Well dataset

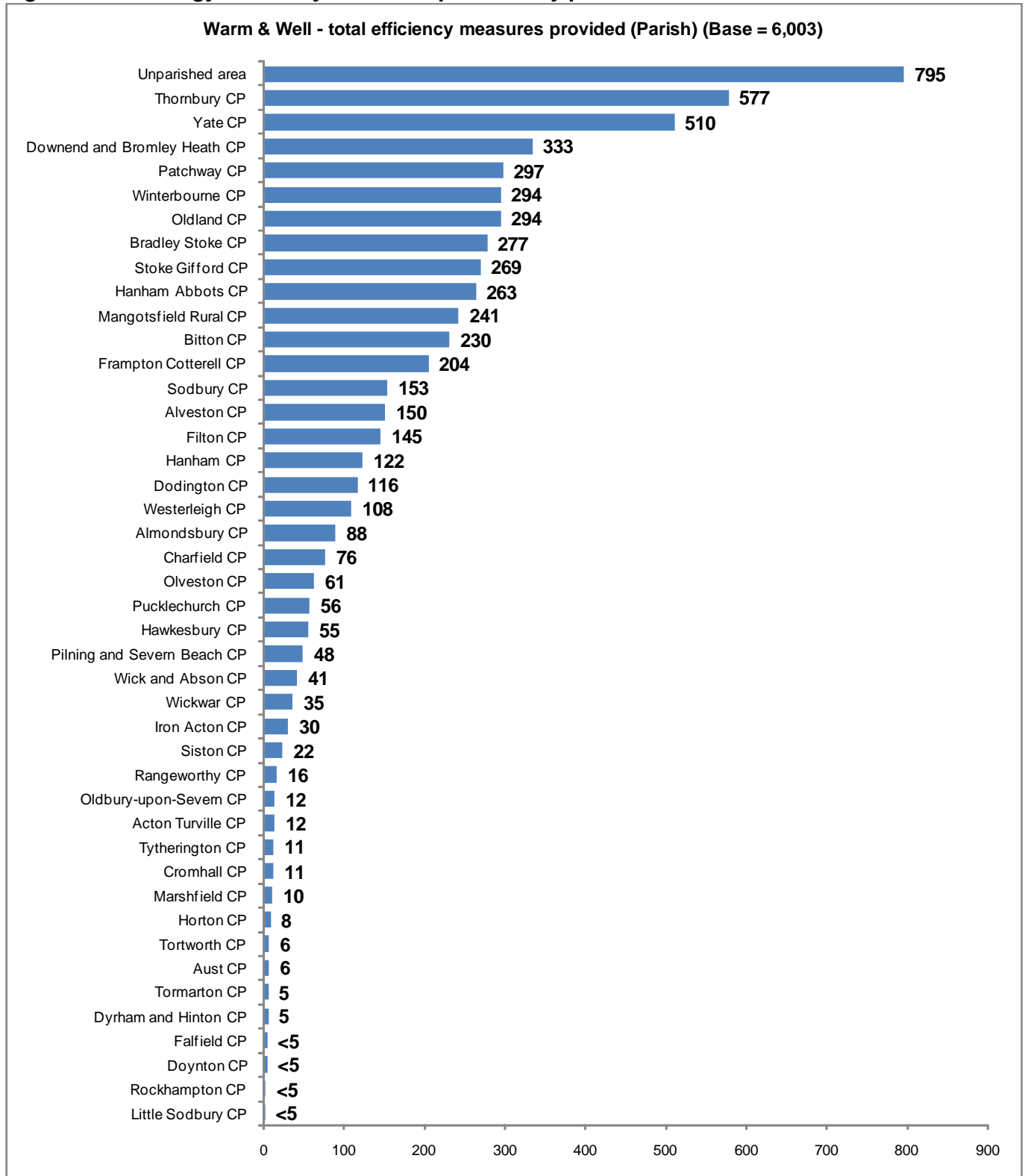
Analysis of main findings

Total energy efficiency measures provided

Between December 2004 and December 2012, the Severn Wye Energy Agency undertook 6,003 energy efficiency measures in South Gloucestershire. Analysis in this section is based on all 6,003 records (i.e. includes households which received more than one measure).

Geographical analysis at parish level (Fig 11) shows that, in numerical terms, the un-parished area (795), Thornbury (577), Yate (510) and Downend and Bromley Heath (333) where the parishes with the highest total number of energy efficiency schemes installed. The smaller parishes of Little Sodbury, Rockhampton, Downton and Falfield had the fewest (all below 5).

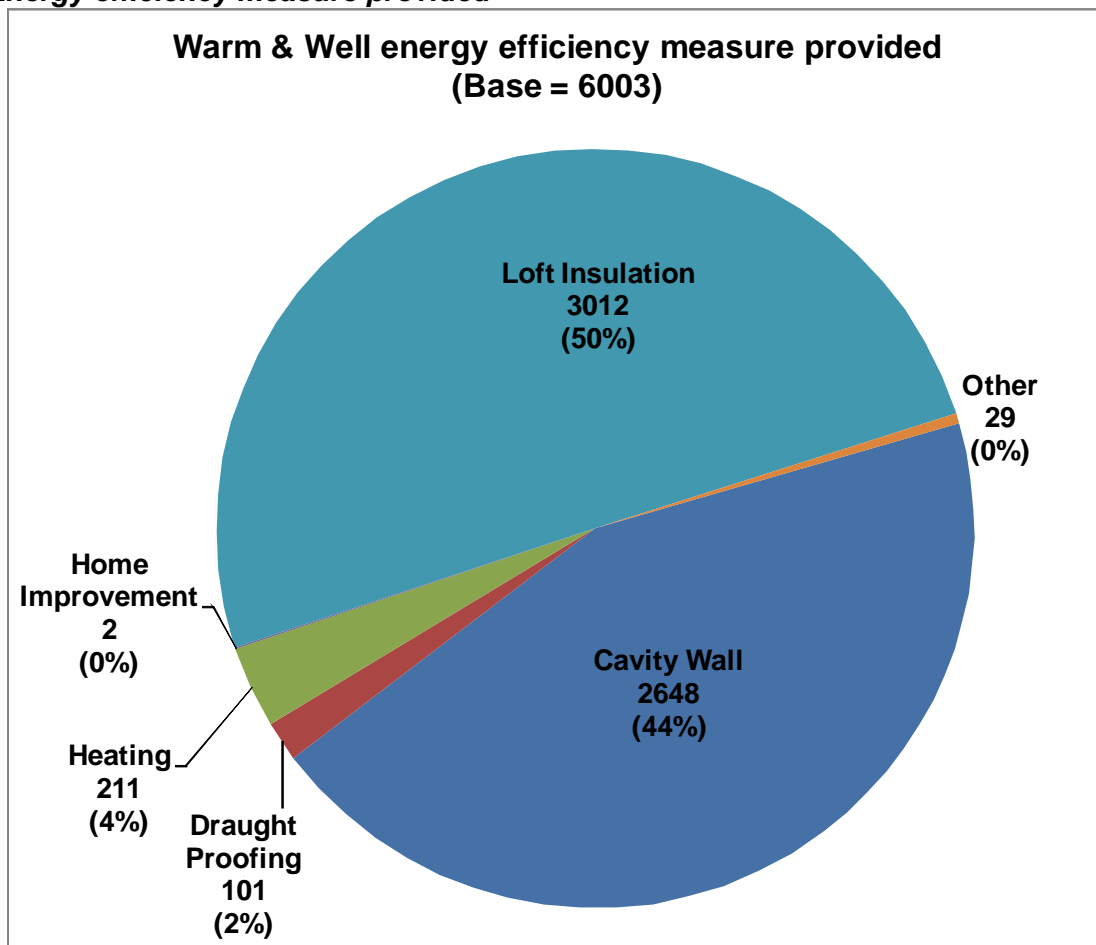
Fig 11: Total energy efficiency measures provided by parish



Energy efficiency measures installed by type

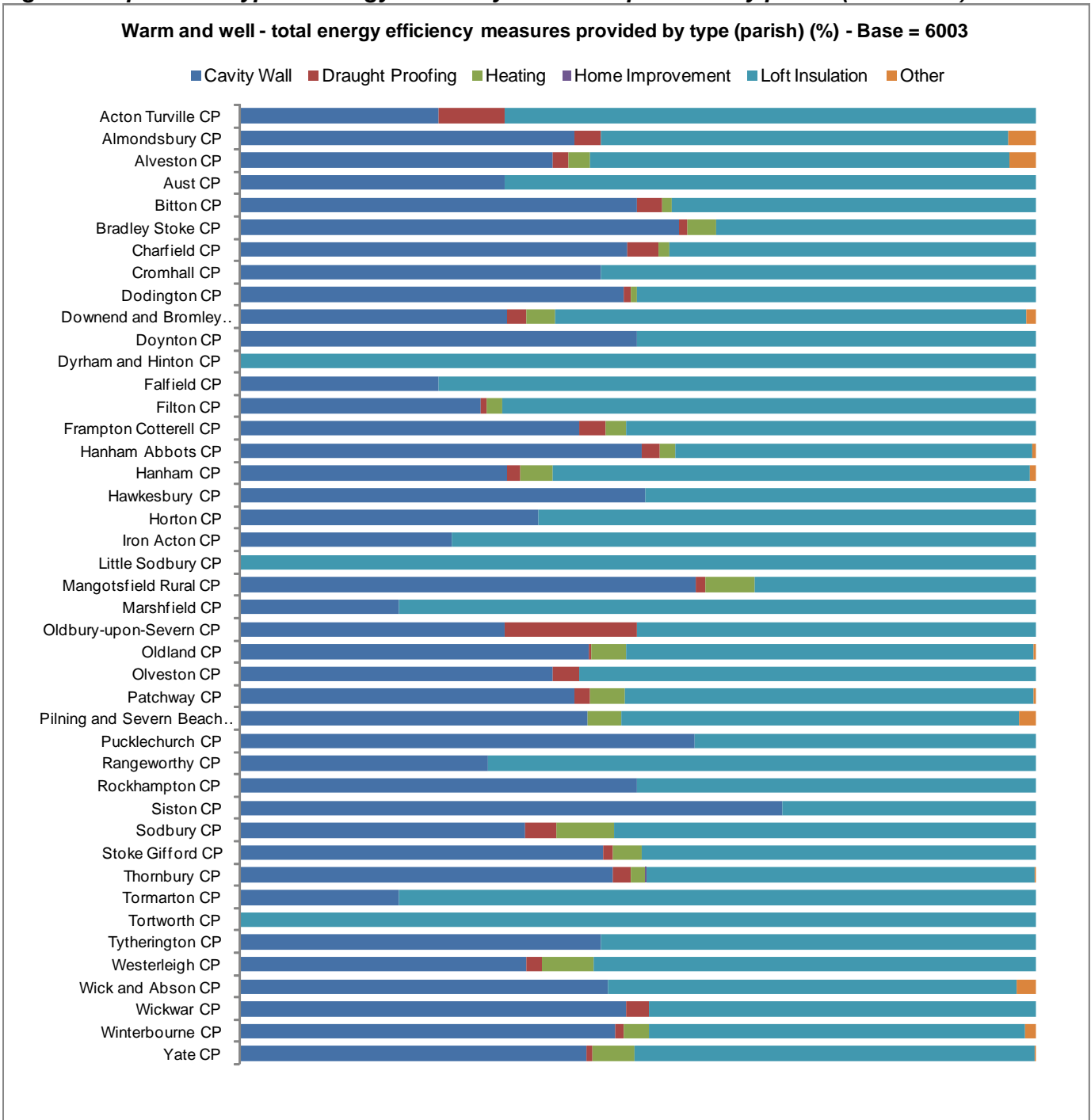
The majority of installations were for loft insulation (50%) and cavity wall insulation (44%) (Fig 12).

Fig 12. Energy efficiency measure provided



Geographical analysis at parish level shows that: Siston (68%), Mangotsfield Rural (57%), Pucklechurch (57%) and Bradley Stoke (55%) were the parishes with the highest proportion of cavity wall installations. Whilst; Dyrham & Hinton, Little Sodbury and Tortworth were the parishes with the largest proportion of loft installations.

Fig 13. Proportion – type of energy efficiency measures provided by parish (base 6003)



Households assisted by the warm and well scheme

In order to identify the number of households benefiting from the ‘Warm and Well’ scheme it is necessary to remove duplicate address records from the database (so each property is only counted once). Of the 6,003 total records within South Gloucestershire, 1,297 were ‘duplicate records’ (indicating that they had received more than one energy efficiency measure). Once these address records were removed there were 5,016 ‘unique’ property records to analyse.

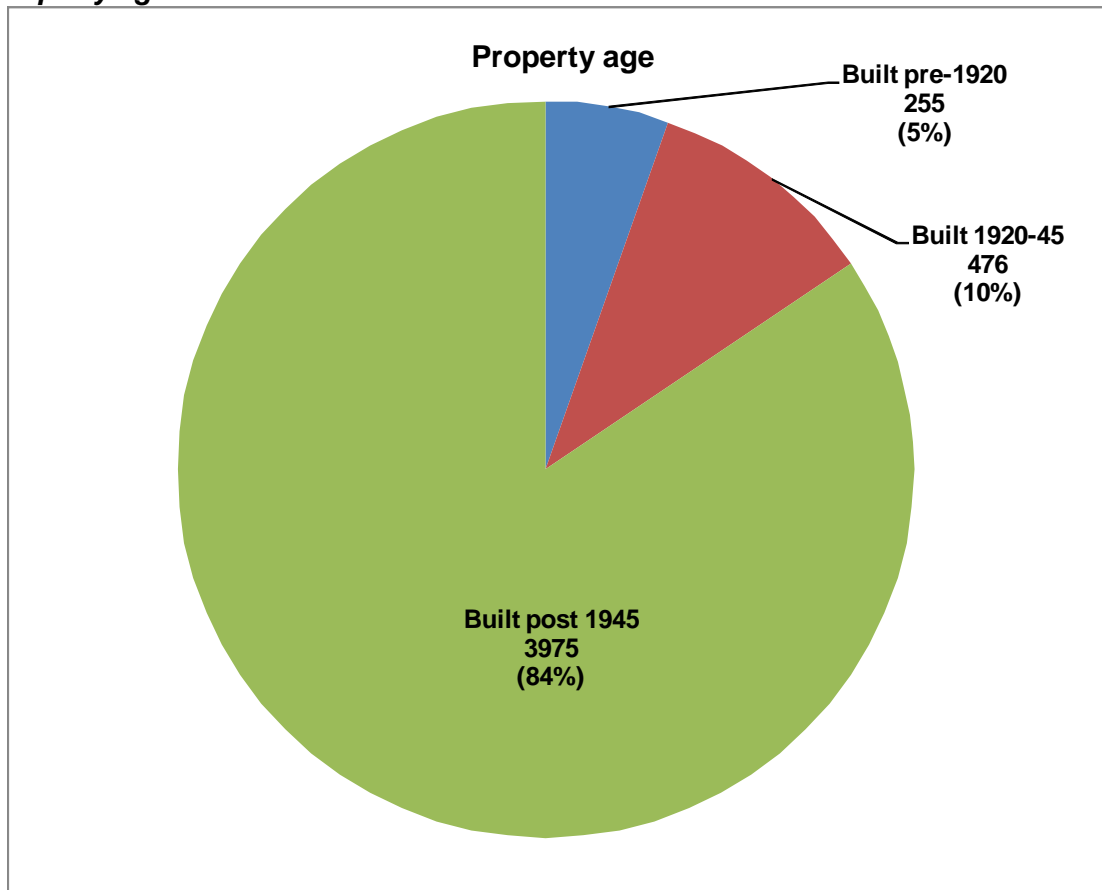
Analysis by geographical area (Table 5) shows that the highest number of households assisted by the ‘Warm and Well’ scheme were in the unparished area (635), Thornbury (434) and Yate (391). In proportional terms the parishes with the highest proportion of households assisted by the scheme (using 2011 Census as the denominator) were Tortworth (11%), Alveston (9%), Hawkesbury (9%) and Thornbury (9%).

Property age

As there is no comprehensive accessible national database of property age; the 'Warm and Well' dataset provides one of the most useful sources of data related to property age in South Gloucestershire.

The majority (84%) of properties in the 'Warm and well' dataset were constructed in the period since World War II, 10% were built 1920-45, and 5% were built prior to 1920. From a 'local knowledge' perspective these figures seem plausible.

Fig 14. Property age



Geographical analysis

Analysis by parish (Table 5) shows that:

- **Properties built prior to 1920:** Little Sodbury, Tortworth, and Dyrham & Hinton were the parishes with the highest proportion of properties (in the sample) built prior to 1920. However sample sizes are very low so these proportions should be treated with caution. In numeric terms, the unparished area (32), Winterbourne (22) and Bitton (20) were the parishes with the largest number of properties built prior to 1920.
- **Properties built 1920-45:** Filton (64%) and Hanham (30%) were the parishes with the highest proportion of properties (in the sample) built 1920-45. In numeric terms, the un-parished area (107), Filton (79) and Downend & Bromley Heath had the largest number of properties built in this period.
- **Properties built post 1945:** Over 95% of properties (in the sample) in Bradley Stoke, Dodington, Yate and Oldland were built post WWII. In numeric terms, Thornbury (413), Yate (379) Oldland (228) and Bradley Stoke (200) had the largest number of properties built in this period.

Table 5. Property age by parish

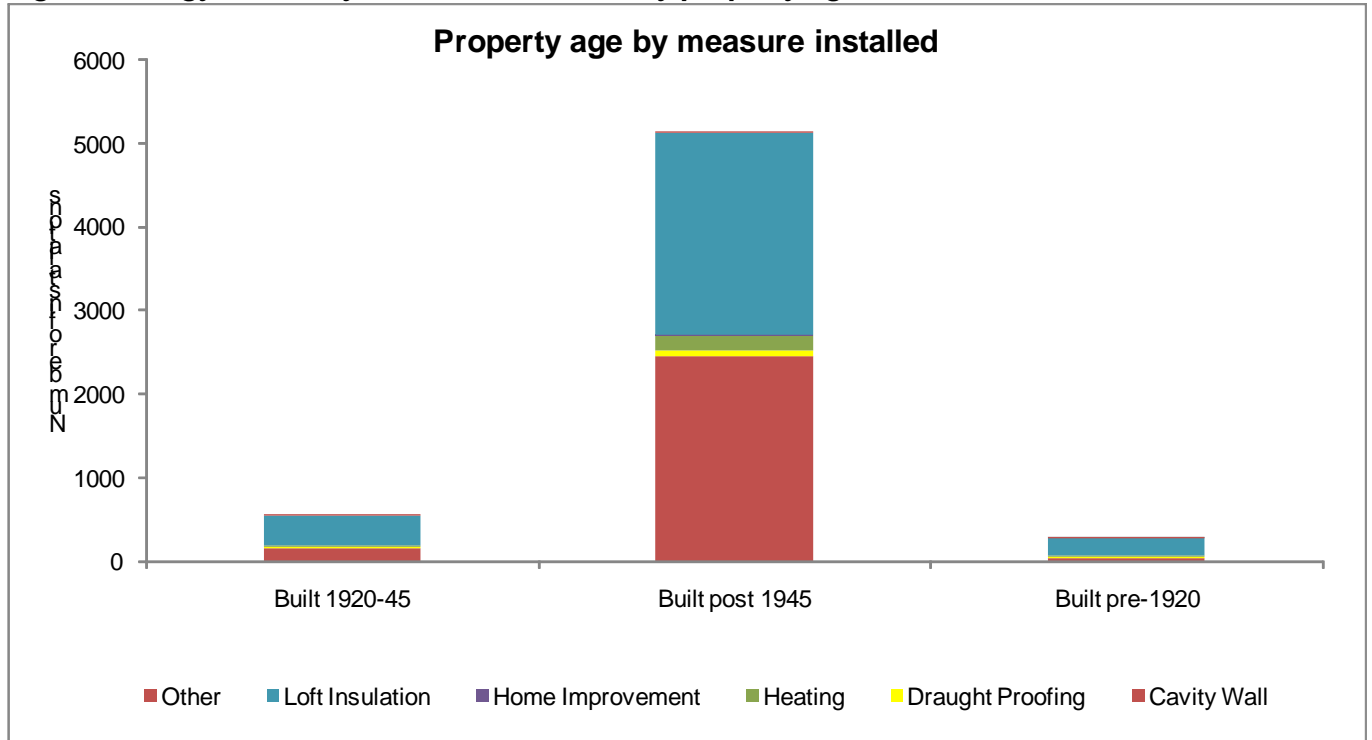
Name	All households (2011 Census)	Total assisted by 'Warm & Well'	% assisted by 'Warm and Well'	Property age (count)			Property age (% of sample)		
				# Built pre-1920	# Built 1920-45	# Built post 1945	% Built pre-1920	% Built 1920-45	% Built post 1945
Acton Turville	155	10	6%	5	0	5	50%	0%	50%
Almondsbury	1,812	71	4%	7	10	54	10%	14%	76%
Alveston	1,292	116	9%	9	3	104	8%	3%	90%
Aust	195	6	3%	3	0	3	50%	0%	50%
Badminton	120	0	0%	0	0	0	0%	0%	0%
Bitton	3,694	181	5%	20	11	150	11%	6%	83%
Bradley Stoke	8,434	201	2%	1	0	200	0%	0%	100%
Charfield	974	54	6%	3	3	48	6%	6%	89%
Cold Ashton	96	0	0%	0	0	0	0%	0%	0%
Cromhall	279	9	3%	3	0	6	33%	0%	67%
Dodington	3,072	85	3%	1	0	84	1%	0%	99%
Downend and Bromley Heath	5,044	272	5%	11	65	196	4%	24%	72%
Doynton	133	3	2%	1	0	2	33%	0%	67%
Dyrham and Hinton	121	5	4%	3	0	2	60%	0%	40%
Falfield	207	4	2%	2	0	2	50%	0%	50%
Filton	4,514	124	3%	2	79	43	2%	64%	35%
Frampton Cotterell	2,577	169	7%	19	5	145	11%	3%	86%
Hanham	2,630	93	4%	6	28	59	6%	30%	63%
Hanham Abbots	2,350	191	8%	5	13	173	3%	7%	91%
Hawkesbury	491	43	9%	6	1	36	14%	2%	84%
Hill	42	0	0%	0	0	0	0%	0%	0%
Horton	142	6	4%	2	0	4	33%	0%	67%
Iron Acton	532	24	5%	7	2	15	29%	8%	63%
Little Sodbury	51	1	2%	1	0	0	100%	0%	0%
Mangotsfield Rural	4,921	188	4%	0	9	179	0%	5%	95%
Marshfield	719	9	1%	3	0	6	33%	0%	67%
Oldbury-upon-Severn	310	10	3%	4	0	6	40%	0%	60%
Oldland	6,390	238	4%	3	7	228	1%	3%	96%
Olveston	823	53	6%	14	1	38	26%	2%	72%
Patchway	4,514	231	5%	0	55	176	0%	24%	76%
Pilning and Severn Beach	1,507	42	3%	5	5	32	12%	12%	76%
Pucklechurch	1,153	45	4%	5	2	38	11%	4%	84%
Rangeworthy	254	13	5%	2	3	8	15%	23%	62%
Rockhampton	64	2	3%	1	0	1	50%	0%	50%
Siston	1,852	21	1%	2	1	18	10%	5%	86%
Sodbury	2,225	120	5%	6	6	108	5%	5%	90%
Stoke Gifford	5,679	205	4%	1	16	188	0%	8%	92%
Thornbury	5,095	434	9%	13	8	413	3%	2%	95%
Tormarton	152	5	3%	1	1	3	20%	20%	60%
Tortworth	53	6	11%	4	0	2	67%	0%	33%
Tytherington	256	8	3%	1	0	7	13%	0%	88%
Westerleigh	1,423	88	6%	9	10	69	10%	11%	78%
Wick and Abson	803	35	4%	2	5	28	6%	14%	80%
Wickwar	709	27	4%	3	1	23	11%	4%	85%
Winterbourne	3,667	232	6%	22	12	198	9%	5%	85%
Yate	8,855	391	4%	5	7	379	1%	2%	97%
Unparished area	17,157	635	4%	32	107	496	5%	17%	78%
South Gloucestershire Total	107,538	4706	4%	255	476	3975	5%	10%	84%
Out of area / no postcode		311		45	34	232			

Energy efficiency measure installed by property age

Analysis of the energy efficiency measures installed by the age of the property shows that:

- The majority (78%) of properties (in the sample) built prior to 1920 have had loft insulation installed
- Almost two thirds (64%) of the properties (in the sample) built 1920-45 have had loft insulation installed and just over a quarter (28%) have had cavity wall insulation installed
- Of the properties (in the sample) constructed since WWII, half (50%) have had loft insulation installed and 44% have had cavity wall insulation installed

Fig 15. Energy efficiency measures installed by property age



4. Conclusions

This report has provided an overview of some of the key factors relevant to the Green Deal scheme and has investigated their geographical distribution across South Gloucestershire.

The report and accompanying appendices will provide a basis for further analysis and geographically focussed service delivery.

Key for Appendix A. See page 3 of research report for further detail.

Indicator	Detail	Source	GREEN (Map & Table Code)	RED (Map & Table Code)
% Age 65 +	% of resident population age 65yrs or over	2011 Census	1. Lowest % of older people	5. Highest % of older people
Median Age	Median age of resident population	2011 Census	1. Lowest median age	5. Highest median age
% Unemployed	% of resident population age 16-74 unemployed	2011 Census	1. Lowest % of unemployed residents	5. Highest % of unemployed residents
% Owner Occupied	% households which are owner occupied	2011 Census	1. Lowest % of owner occupied households	5. Highest % of owner occupied households
% Socially rented	% households which are socially rented	2011 Census	1. Lowest % of socially rented households	5. Highest % of socially rented households
% Private rented	% households which are privately rented	2011 Census	1. Lowest % of privately rented households	5. Highest % of privately rented households
% No central heating	% households with no central heating	2011 Census	1. Lowest % of households with no central heating	5. Highest % of households with no central heating
% Gas central heating	% households with gas central heating	2011 Census	1. Highest % of households with gas central heating	5. Lowest % of households with gas central heating
% Electric central heating	% households with electric central heating	2011 Census	1. Lowest % of households with electric central heating	5. Highest % of households with electric central heating
% Oil central heating	% households with oil central heating	2011 Census	1. Lowest % of households with oil central heating	5. Highest % of households with oil central heating
% Solid fuel central heating	% households with solid fuel central heating	2011 Census	1. Lowest % of households with solid fuel central heating	5. Highest % of households with solid fuel central heating
% Other central heating	% households with other types of central heating	2011 Census	1. Lowest % of households with other central heating	5. Highest % of households with other central heating
% 2 or more types of central heating	% households with 2 or more types of central heating	2011 Census	1. Lowest % of households with 2 or more types of central heating	5. Highest % of households with 2 or more types of central heating
% 'off gas' households	Households with: No Central Heating + Electric Central Heating + Oil Central Heating + Solid Fuel Central Heating + Other Central Heating	2011 Census	1. Lowest % of 'off gas' households	5. Highest % of 'off gas' households
Median Household Income (£)	Median household income	CACI Paycheck 2013	1. Highest median income	5. Lowest median income

		Population characteristics			Household characteristics - Tenure			Household characteristics - Central Heating								Household Income		
Code	Name	Highest	Lowest	Highest	Highest	Lowest	Highest	Highest	Lowest	Highest	Lowest	Highest	Lowest	Highest	Lowest	Highest	Highest	Lowest
		Key: Red - Green	Key: Dark Green	Key: Red - Green	Key: Red - Green	Key: Red - Green	Key: Red - Green	Key: Red - Green	Key: Red - Green	Key: Red - Green	Key: Red - Green	Key: Red - Green	Key: Red - Green	Key: Red - Green	Key: Red - Green	Key: Red - Green	Key: Red - Green	Key: Red - Green
		% Age 65 +	Median Age	% Unemployed	% Owner Occupied	% Socially rented	% Private rented	% No central heating	% Gas central heating	% Electric central heating	% Oil central heating	% Solid fuel central heating	% Other central heating	% 2 or more types of central heating	% 'off gas' areas	Median Household Income (£)		
E00075091	Almondsbury: E00075091	26.5	52.5	3.1	87.4	5.6	7.0	1.4	38.5	10.5	38.5	0.0	7.0	4.2	57.3	£28,574		
E00075093	Almondsbury: E00075093	21.1	47.0	1.5	87.2	2.1	9.2	0.0	54.6	2.8	35.5	0.7	0.7	5.7	39.7	£44,956		
E00075095	Almondsbury: E00075095	25.1	52.0	2.2	89.7	3.7	5.1	0.7	81.6	0.7	10.3	2.2	0.0	4.4	14.0	£45,768		
E00075096	Almondsbury: E00075096	24.6	47.0	1.6	78.8	10.3	9.6	2.7	13.0	11.6	64.4	1.4	1.4	5.5	81.5	£36,382		
E00075097	Almondsbury: E00075097	27.9	51.0	0.8	96.4	0.0	3.6	0.0	26.8	4.3	58.7	2.9	1.4	5.8	67.4	£37,147		
E00075098	Almondsbury: E00075098	22.3	47.0	1.9	74.8	11.4	9.8	3.3	47.2	0.0	32.5	4.9	1.6	10.6	42.3	£28,303		
E00075099	Almondsbury: E00075099	19.6	45.0	1.8	84.3	3.7	9.7	0.7	70.9	2.2	20.9	1.5	0.7	3.0	26.1	£40,749		
E00075100	Almondsbury: E00075100	17.7	43.5	2.0	76.5	8.7	14.8	1.7	47.8	4.3	33.0	6.1	0.0	7.0	45.2	£36,151		
E00173072	Almondsbury: E00173072	4.1	29.0	4.0	61.8	28.2	9.2	0.0	90.1	1.5	3.8	0.0	0.0	4.6	5.3	£44,432		
E00173074	Almondsbury: E00173074	3.7	28.0	2.4	72.4	19.0	8.6	0.0	86.2	2.6	5.2	0.9	0.9	4.3	9.5	£40,159		
E00173075	Almondsbury: E00173075	6.8	38.0	2.8	82.7	5.8	9.6	0.0	85.4	1.9	21.2	3.8	1.9	5.8	28.8	£39,539		
E00173077	Almondsbury: E00173077	19.1	41.0	1.9	68.9	18.9	12.2	2.2	78.9	5.6	7.8	1.1	1.1	3.3	17.8	£36,594		
E00173078	Almondsbury: E00173078	21.0	42.0	1.5	86.1	1.7	12.2	0.0	82.6	5.2	7.8	0.0	0.0	4.3	13.0	£39,707		
E00075111	Bitton: E00075111	20.9	46.0	1.4	81.9	0.5	14.3	7.7	20.3	7.7	47.8	1.1	1.1	3.8	65.4	£33,818		
E00075112	Bitton: E00075112	26.5	46.0	3.0	64.8	22.8	9.6	0.0	71.4	13.3	8.6	1.9	1.9	3.8	24.8	£23,437		
E00075113	Bitton: E00075113	18.3	45.0	3.0	81.1	1.6	17.3	1.6	73.2	7.1	7.9	2.4	1.0	7.8	18.9	£41,898		
E00075114	Bitton: E00075114	18.7	57.0	1.9	93.7	1.7	1.7	0.0	92.7	0.9	4.3	0.0	0.0	1.9	1.7	£37,862		
E00075115	Bitton: E00075115	45.7	60.5	0.0	93.7	1.8	4.5	0.0	80.2	0.9	16.2	0.0	1.8	0.9	18.9	£27,802		
E00075116	Bitton: E00075116	12.6	41.0	0.7	94.5	1.6	3.9	0.8	94.5	0.0	0.0	0.0	2.4	2.4	3.1	£38,041		
E00075117	Bitton: E00075117	21.3	47.5	2.0	83.0	8.0	8.9	0.0	81.3	4.5	4.5	0.0	0.9	8.9	9.8	£31,815		
E00075118	Bitton: E00075118	18.5	46.0	3.7	65.8	27.2	6.1	0.9	78.9	10.5	1.8	0.9	1.8	5.3	15.8	£28,744		
E00075119	Bitton: E00075119	22.2	43.5	1.5	82.8	5.3	10.6	4.6	88.7	1.3	0.7	0.0	0.7	4.0	7.3	£35,852		
E00075120	Bitton: E00075120	10.2	40.0	3.2	81.0	11.3	7.7	2.1	88.7	2.8	1.4	0.0	2.8	2.1	9.2	£36,438		
E00075121	Bitton: E00075121	6.0	27.0	9.0	28.5	61.8	9.7	0.7	87.5	2.8	4.2	0.7	0.7	3.5	9.0	£17,385		
E00075122	Boyd Valley: E00075122	16.3	47.0	1.2	72.9	4.2	19.8	4.2	8.3	11.5	67.7	2.1	1.0	5.2	86.5	£33,840		
E00075123	Boyd Valley: E00075123	17.8	46.0	2.6	67.7	18.0	13.5	2.3	9.8	23.3	51.9	4.5	0.8	7.5	82.7	£29,598		
E00075124	Boyd Valley: E00075124	18.6	48.0	0.8	71.9	6.6	15.7	2.5	8.3	5.0	70.2	5.8	0.0	8.3	83.5	£29,662		
E00075125	Boyd Valley: E00075125	20.5	45.0	1.3	87.6	0.0	9.6	1.7	86.5	2.2	2.2	0.0	0.0	7.3	6.2	£38,350		
E00075126	Boyd Valley: E00075126	21.5	43.0	3.8	42.3	46.3	10.6	2.4	82.9	7.3	1.6	1.6	0.8	3.3	13.8	£22,154		
E00075127	Boyd Valley: E00075127	25.1	46.0	2.0	70.4	2.6	21.7	2.6	30.4	9.6	33.0	7.8	2.6	13.9	55.7	£30,732		
E00075128	Boyd Valley: E00075128	18.2	44.0	2.2	76.4	1.8	19.4	3.0	89.1	1.8	2.4	0.0	0.0	3.6	7.3	£38,656		
E00075129	Boyd Valley: E00075129	17.6	41.0	1.8	82.6	0.7	14.5	1.4	84.8	2.2	5.1	0.0	0.0	6.5	8.7	£39,948		
E00075130	Boyd Valley: E00075130	15.6	41.0	1.4	84.5	5.5	10.0	2.7	21.8	5.5	38.2	17.3	2.7	11.8	66.4	£38,500		
E00075131	Boyd Valley: E00075131	21.9	47.0	2.5	81.7	5.8	9.6	1.0	11.5	6.7	55.8	12.5	1.9	10.6	77.9	£34,589		
E00075132	Boyd Valley: E00075132	22.6	48.0	2.2	89.9	2.0	7.4	0.7	75.0	2.7	13.5	1.4	0.0	6.8	18.2	£42,831		
E00075133	Boyd Valley: E00075133	43.5	60.0	3.7	51.8	43.0	2.6	1.8	62.3	18.4	10.5	0.0	0.9	6.1	31.6	£23,034		
E00075134	Boyd Valley: E00075134	20.9	47.0	4.4	74.6	16.2	8.5	0.8	86.2	6.2	3.1	2.3	0.0	1.5	12.3	£32,069		
E00075135	Boyd Valley: E00075135	14.7	30.0	2.9	89.3	6.1	3.1	0.0	78.6	2.3	10.7	4.6	0.0	3.8	17.6	£28,878		
E00075136	Boyd Valley: E00075136	11.0	38.0	2.6	86.3	1.5	11.5	2.3	84.7	6.1	0.0	0.0	1.5	5.3	9.9	£34,505		
E00075137	Boyd Valley: E00075137	12.8	39.5	2.4	87.7	2.2	9.4	1.4	90.6	4.3	0.7	0.7	1.4	0.7	8.7	£32,305		
E00075138	Boyd Valley: E00075138	10.6	41.0	4.2	93.2	4.8	2.0	0.7	87.1	0.7	2.0	2.0	1.4	6.1	6.8	£38,067		
E00075139	Boyd Valley: E00075139	23.5	47.0	2.0	91.2	4.4	4.4	0.7	77.2	2.9	9.6	2.2	0.0	7.4	15.4	£31,122		
E00075140	Boyd Valley: E00075140	36.1	55.0	2.7	85.4	9.8	3.3	1.6	78.9	8.1	7.3	0.8	0.0	3.3	17.9	£22,320		
E00075141	Boyd Valley: E00075141	15.3	42.0	3.2	68.9	10.6	18.9	0.8	66.7	3.0	22.0	1.5	0.8	5.3	28.0	£28,968		
E00075142	Boyd Valley: E00075142	24.6	47.0	3.7	54.8	32.5	11.1	2.4	72.2	18.3	1.6	1.6	0.0	4.0	23.8	£21,934		
E00075143	Boyd Valley: E00075143	24.0	43.0	4.8	75.9	6.8	14.3	1.5	72.2	10.5	7.5	1.5	0.8	6.0	21.8	£26,519		
E00075144	Boyd Valley: E00075144	20.9	47.0	3.8	88.2	0.0	11.1	2.0	48.4	3.9	34.6	3.3	1.3	6.5	45.1	£32,185		
E00075162	Bradley Stoke Central and Stoke Lodge: E00075162	6.1	33.0	3.6	67.2	0.0	31.4	1.5	89.8	5.8	0.0	0.0	0.0	2.9	7.3	£44,866		
E00075164	Bradley Stoke Central and Stoke Lodge: E00075164	2.5	36.0	2.1	79.6	1.9	18.4	0.0	91.3	4.9	1.0	0.0	0.0	2.9	5.8	£45,067		
E00075165	Bradley Stoke Central and Stoke Lodge: E00075165	3.3	30.0	3.5	71.4	1.6	26.2	0.0	94.4	4.0	0.0	0.0	0.0	1.6	4.0	£38,444		
E00075166	Bradley Stoke Central and Stoke Lodge: E00075166	6.3	34.0	2.8	65.9	0.7	33.3	0.0	97.0	0.0	0.0	0.0	0.7	2.2	0.7	£44,205		
E00075168	Bradley Stoke Central and Stoke Lodge: E00075168	6.9	38.0	0.8	92.6	0.8	5.0	0.0	98.3	1.7	0.0	0.0	0.0	0.0	1.7	£48,620		
E00075169	Bradley Stoke Central and Stoke Lodge: E00075169	4.3	33.0	0.6	73.5	1.2	25.3	1.2	94.0	2.4	0.0	0.0	0.0	2.4	3.6	£42,724		
E00075170	Bradley Stoke Central and Stoke Lodge: E00075170	3.2	33.0	1.8	77.3	0.8	22.0	0.0	96.2	1.5	0.0	0.0	0.8	1.5	2.3	£53,575		
E00075171	Bradley Stoke Central and Stoke Lodge: E00075171	4.9	31.0	2.4	63.9	1.4	34.7	4.2	87.5	7.6	0.0	0.0	0.0	0.7	11.8	£40,678		
E00075172	Bradley Stoke Central and Stoke Lodge: E00075172	4.1	31.0	2.8	54.1	2.5	43.4	1.6	96.7	0.0	0.0	0.0	0.0	0.8	2.5	£44,646		
E00075173	Bradley Stoke Central and Stoke Lodge: E00075173	0.4	31.0	1.0	61.9	0.0	38.1	6.2	85.8	8.0	0.0	0.0	0.0	1.2	14.2	£45,447		
E00075174	Bradley Stoke Central and Stoke Lodge: E00075174	5.6	35.0	4.6	59.3	1.2	38.4	1.2	97.7	0.0	0.0	0.0	0.0	1.2	1.2	£45,447		
E00075179	Bradley Stoke Central and Stoke Lodge: E00075179	2.2	29.0	6.3	38.1	2.6	59.4	12.3	64.3	22.6	0.0	0.0	0.0	2.6	26.4	£32,827		
E00075183	Bradley Stoke Central and Stoke Lodge: E00075183	5.0	33.0	1.8	75.9	0.3	19.3	4.4	79.3	16.4	0.0	0.0	0.0	0.0	20.7	£38,164		
E00075184	Bradley Stoke Central and Stoke Lodge: E00075184	6.2	32.5	3.0	73.8	0.8	25.4	0.8	95.3	3.3	0.0	0.0	0.0	4.1	44.8	£40,200		
E00075185	Bradley Stoke Central and Stoke Lodge: E00075185	1.1	31.0	4.8	33.0	0.9	66.0	10.4	52.8	29.2	0.0	0.0	0.9	5.7	40.6	£35,174		
E00075187	Bradley Stoke Central and Stoke Lodge: E00075187	3.0	29.0	5.6	52.4	1.4	45.5	1.4	94.4	1.4	0.7	0.0	0.0	2.1	3.5	£44,781		
E00075188	Bradley Stoke Central and Stoke Lodge: E00075188	5.1	36.0	1.8	84.9	0.7	12.9	1.4	91.4	3.6	0.0	0.0	2.2	1.4	7.2	£46,506		
E00075515	Bradley Stoke Central and Stoke Lodge: E00075515	21.8	42.0	2.7	70.8	17.7	10.8	1.5	84.6	8.5	0.0	0.0	0.6	5.4	10.0	£25,137		
E00075521	Bradley Stoke Central and Stoke Lodge: E00075521	48.1	64.0	1.1	98.4	0.8	0.8	0.0	93.6	4.0	0.8	0.0	0.8	0.8	5.6	£26,580		
E00075525	Bradley Stoke Central and Stoke Lodge: E00075525	30.0	50.0	4.6	93.0	1.6	4.7	0.0	93.8	3.1	0.8	0.0	0.0	2.3	3.9			

Code	Name	Population characteristics			Household characteristics - Tenure			Household characteristics - Central Heating								Household Income	
		Lowest	Highest	Highest	Lowest	Highest	Lowest	Lowest	Highest	Lowest	Highest	Lowest	Highest	Lowest	Highest	Lowest	Highest
		% Age 65 +	Median Age	% Unemployed	% Owner Occupied	% Socially rented	% Private rented	% No central heating	% Gas central heating	% Electric central heating	% Oil central heating	% Solid fuel central heating	% Other central heating	% 2 or more types of central heating	% 'off gas' areas	Median Household Income (£)	
E00075216	Charfield: E00075216	17.2	44.0	3.0	81.6	2.8	14.2	2.8	12.8	8.5	56.7	2.8	2.8	13.5	73.8	£43,000	
E00075217	Charfield: E00075217	13.6	43.0	2.8	82.1	1.9	60.4	7.5	32.1	0.0	47.2	3.8	0.0	9.4	58.5	£30,831	
E00075709	Charfield: E00075709	11.3	40.0	1.1	84.0	6.4	7.4	4.3	14.9	11.7	53.2	2.1	4.3	9.6	75.5	£36,852	
E00075710	Charfield: E00075710	10.3	35.0	3.4	78.8	3.5	15.0	2.7	14.2	9.7	59.3	2.7	3.5	8.0	77.9	£35,448	
E00173069	Charfield: E00173069	6.2	40.0	1.7	75.0	5.0	17.5	0.0	20.0	5.0	55.0	5.0	2.5	12.5	67.5	£33,007	
E00173071	Charfield: E00173071	18.0	44.0	1.6	68.4	18.4	11.2	4.1	12.2	23.5	44.9	6.1	1.0	8.2	79.6	£29,327	
E00075218	Chipping Sodbury: E00075218	20.1	47.0	0.0	87.7	0.8	10.0	0.8	93.8	3.1	0.0	0.0	0.8	1.5	4.6	£34,736	
E00075219	Chipping Sodbury: E00075219	17.6	37.0	1.8	90.7	1.7	7.6	0.8	92.4	4.2	0.0	0.8	0.0	1.7	5.9	£35,014	
E00075220	Chipping Sodbury: E00075220	31.2	37.0	2.0	99.1	0.0	0.9	0.0	89.0	0.0	8.3	0.0	0.0	2.8	8.3	£39,383	
E00075221	Chipping Sodbury: E00075221	13.5	42.0	2.5	91.9	1.6	6.5	1.6	95.1	1.6	0.0	0.0	0.0	1.6	3.3	£35,280	
E00075222	Chipping Sodbury: E00075222	25.9	46.0	1.4	99.8	0.8	7.4	0.0	96.7	1.6	0.0	0.0	0.8	0.8	2.5	£31,414	
E00075223	Chipping Sodbury: E00075223	17.6	39.0	0.8	90.0	0.0	10.0	0.8	97.5	0.8	0.0	0.0	0.8	0.0	2.5	£34,489	
E00075224	Chipping Sodbury: E00075224	30.5	50.0	2.6	80.6	8.2	9.7	2.2	80.6	10.4	0.0	0.0	1.5	5.2	14.2	£32,068	
E00075225	Chipping Sodbury: E00075225	40.2	57.5	2.5	89.0	0.7	7.6	0.0	86.2	3.4	0.0	0.0	0.7	4.8	9.0	£35,058	
E00075226	Chipping Sodbury: E00075226	23.9	43.0	2.8	61.9	30.8	4.2	0.8	89.0	7.6	0.0	0.0	0.0	1.7	9.3	£27,698	
E00075227	Chipping Sodbury: E00075227	12.2	40.0	1.9	77.8	0.7	21.5	0.0	98.5	0.0	1.5	0.0	0.0	0.0	1.5	£44,400	
E00075228	Chipping Sodbury: E00075228	25.8	51.0	2.9	91.3	2.6	5.3	0.0	96.6	0.9	1.8	0.0	0.0	1.8	2.6	£34,700	
E00075229	Chipping Sodbury: E00075229	20.9	46.0	2.4	57.2	1.4	39.9	6.3	72.5	15.9	1.4	1.4	0.0	2.2	25.4	£34,122	
E00075230	Chipping Sodbury: E00075230	30.3	53.0	0.8	95.7	1.4	2.8	0.0	97.9	0.0	0.7	0.0	0.0	1.4	0.7	£35,649	
E00075231	Chipping Sodbury: E00075231	26.4	55.0	1.4	93.2	0.8	5.1	0.8	81.4	1.7	11.9	0.0	0.8	3.4	15.3	£40,107	
E00075232	Chipping Sodbury: E00075232	33.8	47.0	1.9	70.4	18.5	8.3	0.9	79.6	10.2	3.7	0.0	0.0	5.6	14.8	£31,592	
E00075233	Chipping Sodbury: E00075233	23.0	41.0	5.1	55.1	35.6	8.5	3.4	88.1	4.2	1.7	0.8	0.0	1.7	10.2	£22,574	
E00075234	Chipping Sodbury: E00075234	27.2	46.0	2.5	50.5	40.6	5.9	2.0	65.3	20.8	5.0	0.0	4.0	3.0	31.7	£17,354	
E00075235	Chipping Sodbury: E00075235	25.6	44.0	3.9	76.6	12.6	7.2	4.5	56.8	23.4	6.3	4.5	0.0	4.5	38.7	£24,955	
E00075236	Chipping Sodbury: E00075236	18.3	46.0	1.0	82.0	0.8	16.4	0.0	94.5	1.6	1.6	0.0	0.0	2.3	3.1	£34,863	
E00075237	Chipping Sodbury: E00075237	46.7	63.0	0.0	47.4	44.8	6.0	1.7	58.6	37.9	0.0	0.0	0.0	1.7	39.7	£12,610	
E00075238	Chipping Sodbury: E00075238	12.8	40.0	1.1	80.0	1.7	18.3	0.0	99.1	0.0	0.0	0.0	0.0	0.9	0.0	£52,341	
E00075239	Chipping Sodbury: E00075239	21.3	53.0	2.3	92.4	1.7	3.4	0.0	95.8	0.8	0.0	0.8	0.0	2.5	1.7	£46,365	
E00075262	Chipping Sodbury: E00075262	9.9	40.0	3.7	82.6	0.9	16.5	14.8	77.4	5.2	0.0	0.9	0.9	0.9	21.7	£34,365	
E00075268	Chipping Sodbury: E00075268	15.9	42.0	1.6	94.1	0.0	5.9	0.0	97.5	0.8	0.0	0.8	0.0	0.8	1.7	£41,204	
E00075240	Cotswold Edge: E00075240	16.5	46.0	1.1	63.9	12.9	20.0	2.6	7.7	16.1	58.1	2.6	0.0	12.9	79.4	£33,331	
E00075241	Cotswold Edge: E00075241	18.5	44.0	2.4	6.7	5.0	58.3	5.0	4.2	3.3	64.2	5.8	1.7	15.8	80.0	£24,031	
E00075243	Cotswold Edge: E00075243	15.3	43.0	2.7	94.0	3.0	3.0	1.0	4.0	4.0	80.0	4.0	0.0	7.0	89.0	£37,454	
E00075244	Cotswold Edge: E00075244	23.9	53.0	2.3	60.8	1.7	30.0	5.0	13.3	4.2	52.5	5.8	1.7	17.5	69.2	£36,651	
E00075245	Cotswold Edge: E00075245	23.1	48.0	1.6	87.1	1.4	9.3	1.4	10.0	2.9	67.1	2.1	1.4	15.0	75.0	£39,890	
E00075246	Cotswold Edge: E00075246	14.4	40.0	4.1	62.6	29.0	6.9	0.8	8.4	17.6	61.8	5.3	0.8	5.3	86.3	£27,801	
E00075247	Cotswold Edge: E00075247	18.9	47.0	2.2	73.9	6.3	16.2	4.9	7.0	4.9	64.1	4.2	3.5	11.3	81.7	£35,410	
E00075248	Cotswold Edge: E00075248	17.7	47.0	1.1	62.7	2.0	29.4	11.8	11.8	9.8	39.2	7.8	2.0	17.6	70.6	£35,704	
E00075249	Cotswold Edge: E00075249	20.0	48.0	1.2	88.0	3.0	4.5	0.0	7.5	11.3	67.7	3.0	1.5	9.0	83.5	£35,731	
E00075250	Cotswold Edge: E00075250	19.9	46.0	2.1	76.7	6.8	12.0	0.8	3.0	8.3	71.4	1.5	2.3	12.8	84.2	£32,407	
E00075251	Cotswold Edge: E00075251	23.3	50.0	1.1	63.8	5.3	25.0	5.3	9.2	10.5	57.9	2.6	2.0	12.5	78.3	£33,720	
E00075252	Dodington: E00075252	7.4	33.5	2.5	87.8	0.0	12.2	1.5	80.2	8.4	4.6	2.3	1.5	1.5	18.3	£32,302	
E00075253	Dodington: E00075253	7.8	33.0	1.6	86.8	0.0	13.2	1.6	86.8	5.4	3.1	1.6	0.0	1.6	11.6	£35,878	
E00075254	Dodington: E00075254	7.9	34.0	2.7	86.2	0.8	13.1	1.5	77.7	10.8	5.4	3.1	0.0	1.5	20.8	£32,958	
E00075255	Dodington: E00075255	7.5	34.0	1.7	86.6	1.7	11.8	1.7	88.2	8.4	0.8	0.8	0.0	0.0	11.8	£30,327	
E00075256	Dodington: E00075256	8.9	35.5	2.2	80.3	0.9	18.8	2.6	79.5	6.0	7.7	0.9	0.0	3.4	17.1	£33,677	
E00075257	Dodington: E00075257	8.9	36.0	2.5	85.6	1.6	12.8	1.6	81.6	8.8	0.8	5.6	0.0	1.6	16.8	£27,236	
E00075258	Dodington: E00075258	9.3	32.0	1.1	82.0	0.0	18.0	1.5	82.0	8.3	3.8	3.0	0.8	0.8	17.3	£35,757	
E00075259	Dodington: E00075259	7.5	35.0	3.8	83.5	0.8	15.7	0.8	81.9	7.9	2.4	5.5	0.0	1.6	16.5	£31,109	
E00075260	Dodington: E00075260	6.1	31.0	0.8	77.0	2.4	19.0	0.0	95.2	2.4	1.6	0.8	0.0	0.0	4.8	£30,783	
E00075261	Dodington: E00075261	4.5	32.0	1.8	75.0	0.7	24.3	1.4	88.6	4.3	2.9	0.0	0.7	2.1	9.3	£31,103	
E00075263	Dodington: E00075263	5.7	31.0	4.3	78.1	1.6	19.5	0.8	86.7	6.3	2.3	1.6	0.8	1.6	11.7	£32,636	
E00075264	Dodington: E00075264	1.9	29.0	2.7	86.4	0.0	13.6	1.8	84.5	7.3	1.8	1.8	0.0	2.7	12.7	£33,729	
E00075265	Dodington: E00075265	4.3	31.0	3.3	85.7	1.9	12.4	0.0	95.2	1.0	1.0	0.0	0.0	2.9	1.9	£36,709	
E00075266	Dodington: E00075266	5.2	30.0	2.1	87.7	0.8	11.5	0.8	85.2	4.9	3.3	4.1	0.0	1.6	13.1	£34,588	
E00075267	Dodington: E00075267	6.6	33.0	4.8	82.2	0.0	17.8	0.8	83.1	3.4	2.5	3.4	2.5	4.2	12.7	£33,437	
E00075269	Dodington: E00075269	34.4	49.5	1.6	94.4	0.0	7.8	0.0	94.5	4.7	0.0	0.0	0.8	0.0	5.5	£38,581	
E00075270	Dodington: E00075270	10.9	38.0	5.2	79.6	2.0	18.4	12.2	80.6	5.1	0.0	0.0	0.0	2.0	17.3	£34,485	
E00075271	Dodington: E00075271	18.8	40.0	4.3	38.6	32.8	26.6	10.4	6.6	80.0	0.6	0.0	1.3	0.0	39.5	£31,892	
E00075272	Dodington: E00075272	17.6	36.5	2.8	82.8	0.6	15.3	1.8	88.3	5.5	0.6	0.6	1.7	1.9	9.8	£29,144	
E00075273	Dodington: E00075273	7.7	30.0	4.4	67.9	1.9	29.5	7.1	138.8	32.7	2.6	0.0	0.0	3.8	42.3	£28,151	
E00075842	Dodington: E00075842	8.6	34.0	3.8	84.4	1.5	14.1	0.0	80.7	8.9	14.4	0.7	0.0	2.2	17.0	£31,164	
E00075845	Dodington: E00075845	8.8	33.0	2.2	80.7	2.1	17.1	0.7	83.6	7.1	6.4	0.7	0.0	1.4	15.0	£30,600	
E00075846	Dodington: E00075846	9.3	35.0	2.6	79.8	1.7	18.5	5.0	81.5	7.6	4.2	0.0	0.0	1.7	16.8	£28,722	
E00075274	Downend: E00075274	34.4	53.0	2.8	45.0	44.2	9.3	3.1	85.3	7.0	0.8	0.8	2.3	0.8	14.0	£15,837	
E00075275	Downend: E00075275	25.6	48.0	2.1	88.7	1.0	10.3	1.0	79.4	17.5	0.0	0.0	0.0	2.1	18.6	£27,132	
E00075276	Downend: E00075276	32.7	48.0	2.3	88.4	2.0	8.8	2.7	72.1	20.4	0.7	0.7	0.7	2.7	25.2	£22,060	
E00075277	Downend: E00075277	19.2	40.0	1.4	57.7	6.1	32.5	0.0	67.5	26.4	0.6	0.0	0.6	4.9	27.6	£24,055	
E00075278	Downend: E00075278	11.6	37.0	2.8	92.3	1.6	4.9	1.1	91.3	1.6	1.1	1.6	0.5	2.7	6.0	£37,566	
E00075279	Downend: E00075279	14.4	40.0	0.4	91.5	0.8	6.9	0.0	96.2	0.8	0.0	0.8	0.0	2.3	1.5	£35,972	
E00075280	Downend: E00075280	20.1	43.0	4.2	92.1	0.0	5.0	0.0	94.3	1.4	0.0	0.0	0.0	4.3	1.4	£29,209	
E00075281	Downend: E00075281	20.4	42.0	3.3	67.7	7.1	24.4	2.4	68.								

Code	Name	Population characteristics			Household characteristics - Tenure			Household characteristics - Central Heating								Household Income	
		Lowest	Highest	Highest	Lowest	Highest	Lowest	Lowest	Highest	Highest	Lowest	Highest	Highest	Lowest	Highest	Lowest	Highest
		% Age 65 +	Median Age	% Unemployed	% Owner Occupied	% Socially rented	% Private rented	% No central heating	% Gas central heating	% Electric central heating	% Oil central heating	% Solid fuel central heating	% Other central heating	% 2 or more types of central heating	% 'off gas' areas	Median Household Income (£)	
E00075634	Emersons Green: E00075634	7.7	36.0	2.3	89.0	0.0	10.5	1.0	90.6	4.7	0.0	0.0	0.0	3.7	5.8	£51,097	
E00075644	Emersons Green: E00075644	11.3	41.0	2.7	93.5	0.0	6.5	0.0	96.4	0.0	0.7	0.0	0.0	2.9	0.7	£53,138	
E00075645	Emersons Green: E00075645	19.6	46.0	0.0	97.7	0.8	1.6	0.8	96.1	0.0	0.8	0.0	0.0	2.3	1.6	£44,764	
E00075646	Emersons Green: E00075646	17.1	43.0	1.8	95.9	0.0	4.1	0.8	93.5	2.4	0.0	0.0	0.0	3.3	3.3	£33,218	
E00075647	Emersons Green: E00075647	10.8	36.0	4.0	76.2	0.8	22.2	0.8	91.3	5.6	0.0	0.8	0.0	1.6	7.1	£43,829	
E00173044	Emersons Green: E00173044	2.4	32.0	1.6	75.8	0.0	23.4	0.0	82.8	13.3	0.0	0.0	0.8	3.1	14.1	£48,565	
E00173046	Emersons Green: E00173046	1.0	29.5	3.6	38.6	0.0	60.6	0.0	82.7	13.4	0.0	0.0	0.0	3.9	13.4	£43,737	
E00173047	Emersons Green: E00173047	6.5	38.0	1.6	94.0	0.7	5.3	0.7	98.0	0.0	0.0	0.0	0.0	1.3	0.7	£54,320	
E00173049	Emersons Green: E00173049	3.7	31.0	2.5	77.6	15.6	6.1	0.0	97.3	1.4	0.0	0.0	0.0	1.4	1.4	£44,845	
E00173050	Emersons Green: E00173050	6.1	38.0	1.7	79.2	1.7	19.2	0.0	93.3	3.3	2.5	0.0	0.0	0.8	5.8	£55,769	
E00173052	Emersons Green: E00173052	3.7	30.0	2.6	28.5	0.0	70.8	3.6	19.0	77.4	0.0	0.0	0.0	0.0	81.0	£45,205	
E00173054	Emersons Green: E00173054	0.5	34.0	1.4	15.0	3.1	81.9	0.0	96.1	0.0	0.0	0.0	0.0	3.9	0.0	£52,377	
E00075308	Filton: E00075308	16.7	35.0	2.0	81.0	1.5	16.8	1.5	93.4	1.5	0.0	3.5	0.0	2.2	4.4	£31,837	
E00075309	Filton: E00075309	19.9	45.0	3.4	84.4	0.8	13.1	0.8	89.3	3.3	2.5	0.0	0.0	4.1	6.6	£31,204	
E00075310	Filton: E00075310	17.2	38.0	3.7	76.4	7.1	16.5	1.6	89.3	9.4	0.0	0.0	0.0	0.0	11.0	£28,104	
E00075311	Filton: E00075311	16.8	42.0	4.4	85.4	1.5	11.7	2.2	89.8	3.6	0.7	0.0	1.5	2.2	8.0	£29,387	
E00075312	Filton: E00075312	17.7	39.0	1.8	75.6	7.6	16.0	8.1	88.5	4.6	0.0	0.8	0.0	3.1	8.4	£24,723	
E00075313	Filton: E00075313	17.4	37.0	3.4	86.4	1.6	11.2	0.8	91.2	4.8	0.8	0.0	0.0	2.4	6.4	£33,523	
E00075314	Filton: E00075314	15.7	39.0	2.4	85.1	0.7	14.2	0.7	92.9	2.8	0.0	0.0	1.4	2.1	5.0	£28,430	
E00075315	Filton: E00075315	15.3	40.0	1.2	82.1	3.3	13.8	3.3	88.6	3.3	0.0	0.8	0.0	4.1	7.3	£32,029	
E00075316	Filton: E00075316	15.2	37.0	1.6	64.0	10.8	24.5	0.7	92.1	2.9	0.0	0.0	0.7	3.6	4.3	£25,093	
E00075317	Filton: E00075317	17.7	31.5	12.6	11.4	63.4	21.1	0.8	62.6	28.5	1.6	0.0	1.6	4.9	32.5	£14,874	
E00075318	Filton: E00075318	10.6	29.0	6.9	45.6	44.0	10.4	0.8	67.2	27.2	1.6	0.8	0.0	2.4	30.4	£38,361	
E00075319	Filton: E00075319	14.0	34.0	1.5	80.9	0.7	18.4	1.5	91.2	0.7	0.0	0.7	1.5	4.4	4.4	£29,549	
E00075320	Filton: E00075320	12.2	30.0	6.6	38.0	33.1	27.0	2.5	78.5	12.9	0.6	0.0	0.6	4.9	16.6	£18,530	
E00075321	Filton: E00075321	61.6	68.0	0.9	92.5	2.8	2.8	0.9	96.2	0.0	0.0	0.0	0.0	2.8	0.9	£14,232	
E00075322	Filton: E00075322	14.4	33.0	3.9	76.3	1.5	19.1	3.8	88.5	3.8	0.0	0.8	0.0	3.1	8.4	£28,366	
E00075323	Filton: E00075323	10.9	35.0	3.1	50.4	23.2	25.6	3.2	60.8	32.0	0.8	0.0	1.6	1.6	37.6	£24,603	
E00075324	Filton: E00075324	15.5	36.0	2.3	75.4	0.7	22.4	4.5	86.6	6.0	0.0	0.0	0.7	2.2	11.2	£30,379	
E00075325	Filton: E00075325	50.0	64.0	0.0	12.3	81.6	4.4	0.0	60.5	31.6	0.0	0.9	7.0	0.0	39.5	£9,155	
E00075326	Filton: E00075326	18.3	35.0	2.0	37.0	45.2	15.6	3.0	54.8	38.5	0.0	0.0	0.7	3.0	42.2	£18,588	
E00075327	Filton: E00075327	12.0	30.0	1.8	64.2	2.0	31.8	3.3	88.1	4.6	0.0	0.0	0.0	4.0	7.9	£31,905	
E00075328	Filton: E00075328	11.1	34.0	7.1	69.6	1.4	29.0	2.2	94.2	2.2	0.0	0.0	0.0	1.4	4.3	£30,906	
E00075329	Filton: E00075329	28.2	42.0	3.4	50.8	32.2	15.3	1.7	63.6	33.1	0.0	0.0	0.0	1.7	34.7	£17,727	
E00075330	Filton: E00075330	22.4	44.5	1.9	90.6	2.4	7.1	0.8	94.5	0.8	0.0	0.8	0.8	2.4	3.1	£30,697	
E00075331	Filton: E00075331	41.0	56.5	6.6	46.3	36.6	17.1	0.8	89.4	7.3	0.8	0.0	1.6	0.0	10.6	£16,108	
E00075332	Filton: E00075332	20.7	37.0	3.7	66.9	2.2	29.4	2.2	89.0	5.1	0.7	0.0	0.0	2.9	8.1	£23,292	
E00075333	Filton: E00075333	16.6	34.0	3.7	77.0	0.8	21.4	2.4	88.9	4.0	0.0	0.0	1.6	3.2	7.9	£28,083	
E00075334	Filton: E00075334	17.0	39.0	3.9	74.0	2.0	23.3	0.7	74.0	20.0	1.3	0.7	0.0	3.3	22.7	£34,482	
E00075335	Filton: E00075335	20.4	43.0	1.9	76.3	0.6	20.0	1.3	79.4	17.5	0.6	0.0	0.0	1.3	19.4	£29,154	
E00075336	Filton: E00075336	15.4	35.0	2.2	66.9	1.3	31.2	1.3	81.2	13.0	0.6	0.0	1.3	2.6	16.2	£30,452	
E00075337	Filton: E00075337	6.0	26.0	4.1	48.6	6.9	44.6	2.3	81.7	11.4	0.6	0.6	0.6	2.9	15.4	£25,596	
E00075338	Filton: E00075338	10.0	33.0	4.0	67.9	1.4	30.0	3.6	87.1	5.0	0.0	0.0	0.0	4.3	8.6	£33,585	
E00075339	Filton: E00075339	12.8	29.0	5.4	47.6	25.7	23.3	3.9	85.0	5.3	0.0	0.0	0.5	5.3	9.7	£19,232	
E00075340	Filton: E00075340	17.1	34.0	3.6	71.3	14.7	12.5	4.4	75.7	14.7	0.7	0.0	1.5	2.9	21.3	£21,741	
E00075341	Frampton Cotterell: E00075341	22.3	44.0	1.2	87.0	2.2	9.4	0.0	89.9	2.2	5.1	0.0	0.0	2.9	7.2	£39,725	
E00075342	Frampton Cotterell: E00075342	34.6	53.0	2.7	94.6	1.6	2.3	0.0	86.8	0.8	5.4	0.8	0.0	6.2	7.0	£38,789	
E00075343	Frampton Cotterell: E00075343	30.6	50.0	0.0	93.8	0.7	4.8	0.0	81.4	1.4	13.8	0.7	0.7	2.1	16.6	£35,790	
E00075344	Frampton Cotterell: E00075344	21.5	44.0	1.3	95.3	0.8	3.9	0.8	90.6	4.7	0.0	1.6	0.0	2.4	7.1	£37,349	
E00075345	Frampton Cotterell: E00075345	19.8	41.0	2.1	91.6	0.0	8.4	0.8	88.5	6.1	1.5	0.8	0.8	1.5	9.9	£31,900	
E00075346	Frampton Cotterell: E00075346	22.3	39.0	2.7	89.7	4.0	4.0	0.0	87.3	3.2	6.3	0.8	0.8	1.6	11.1	£31,844	
E00075347	Frampton Cotterell: E00075347	16.8	47.0	3.0	88.9	2.4	8.7	0.8	93.7	0.8	4.0	0.0	0.0	0.8	5.6	£41,853	
E00075348	Frampton Cotterell: E00075348	18.7	42.0	1.7	93.8	0.0	5.6	0.6	87.0	1.2	6.2	0.6	0.0	4.3	8.7	£36,337	
E00075349	Frampton Cotterell: E00075349	19.9	49.0	2.1	90.9	0.7	7.7	1.4	86.0	2.8	3.5	1.4	0.0	4.9	9.1	£38,070	
E00075350	Frampton Cotterell: E00075350	17.3	45.0	2.7	85.7	4.3	9.3	0.0	91.3	4.3	1.2	0.6	0.0	2.5	6.2	£39,821	
E00075351	Frampton Cotterell: E00075351	13.1	39.0	3.8	46.2	6.2	6.2	0.0	89.2	7.7	10.0	0.8	0.0	2.3	8.5	£27,218	
E00075352	Frampton Cotterell: E00075352	22.7	47.0	1.7	88.9	0.7	10.4	0.7	89.6	1.4	3.5	1.4	0.0	3.5	6.9	£34,781	
E00075353	Frampton Cotterell: E00075353	18.5	40.0	3.3	52.5	40.8	2.5	0.0	92.5	0.8	2.5	0.0	0.8	3.3	4.2	£39,685	
E00075354	Frampton Cotterell: E00075354	30.7	51.0	1.2	96.2	1.5	2.3	0.0	89.5	1.5	3.0	0.0	0.0	6.0	4.5	£31,593	
E00075355	Frampton Cotterell: E00075355	29.9	46.0	1.7	96.7	47.4	8.3	0.0	78.4	19.9	10.0	0.0	0.8	4.1	21.5	£35,380	
E00075356	Frampton Cotterell: E00075356	19.7	44.0	1.7	88.6	7.6	6.3	0.0	93.9	2.3	1.5	0.0	0.8	1.5	4.5	£37,372	
E00075357	Frampton Cotterell: E00075357	6.9	40.0	1.8	78.7	12.5	8.1	0.0	94.1	0.0	2.2	0.0	0.0	3.7	2.2	£47,752	
E00075358	Frampton Cotterell: E00075358	21.2	46.0	1.3	86.7	1.3	10.0	1.3	94.0	0.7	20.7	2.7	2.0	8.7	27.2	£38,964	
E00075359	Frampton Cotterell: E00075359	24.7	48.0	1.0	81.5	11.3	6.5	1.6	79.0	7.3	7.3	0.8	0.0	4.0	16.9	£33,898	
E00075427	Frampton Cotterell: E00075427	18.3	48.0	2.8	82.2	2.2	13.3	2.2	8.9	4.4	60.0	2.2	2.2	20.0	71.1	£38,680	
E00075428	Frampton Cotterell: E00075428	17.0	44.0	3.3	78.8	1.5	15.2	4.5	13.6	6.1	66.7	1.5	1.5	6.1	80.3	£46,767	
E00075430	Frampton Cotterell: E00075430	15.0	46.0	3.0	86.7	1.6	7.8	2.3	10.9	3.1	60.2	6.3	4.7	12.5	76.6	£49,879	
E00075431	Frampton Cotterell: E00075431	15.8	35.0	5.9	51.2	40.5	6.0	4.8	13.1	29.8	36.9	4.8	2.4	8.3	78.6	£19,589	
E00075689	Frenchay and Stoke Park: E00075689	3.9	33.0	3.6	68.9	2.0	28.4	1.4	96.6	0.7	0.0	0.0	0.0	1.4	2.0	£41,617	
E00075691	Frenchay and Stoke Park: E00075691	5.6	29.0	2.1	23.7	9.6	66.7	3.5	38.6	54.4	0.0	0.0	0.0	3.5	57.9	£35,964	
E00075692	Frenchay and Stoke Park: E00075692	4.6	28.0	5.4	47.6	23.6	27.1	1.8	69.3	19.1	7.1	0.0	0.9	1.8	28.9	£44,084	
E00075768	Frenchay and Stoke Park: E00075768	38.6	54.0	2.9	68.7	1.3	27.3	2.7	46.7	47.3	1.3	0.7	0.7				

FINAL

Code	Name	Population characteristics			Household characteristics - Tenure			Household characteristics - Central Heating								Household Income	
		Lowest	Highest	Lowest	Lowest	Highest	Lowest	Lowest	Highest	Lowest	Highest	Lowest	Highest	Lowest	Highest	Lowest	Highest
		% Age 65 +	Median Age	% Unemployed	% Owner Occupied	% Socially rented	% Private rented	% No central heating	% Gas central heating	% Electric central heating	% Oil central heating	% Solid fuel central heating	% Other central heating	% 2 or more types of central heating	% 'off gas' areas	Median Household Income (£)	
E00075518	Patchway: E00075518	22.2	36.5	4.7	42.3	44.5	13.1	0.7	54.7	38.0	0.0	0.0	1.5	5.1	40.1	£18,258	
E00075519	Patchway: E00075519	11.3	39.0	4.0	87.2	3.2	8.0	3.2	90.4	5.6	0.0	0.0	0.0	0.8	8.8	£38,491	
E00075520	Patchway: E00075520	17.4	36.5	4.5	65.1	30.2	4.0	3.2	84.1	8.7	0.0	0.0	0.0	4.0	11.9	£24,130	
E00075522	Patchway: E00075522	11.1	41.0	3.7	94.3	0.8	4.9	0.8	88.5	4.1	0.0	0.0	0.0	2.5	4.1	£36,444	
E00075523	Patchway: E00075523	12.7	34.0	5.4	45.1	45.1	7.7	2.1	76.8	14.1	0.0	2.8	0.7	3.5	19.7	£20,365	
E00075524	Patchway: E00075524	13.6	33.0	2.9	53.6	36.4	7.1	0.0	91.4	5.7	0.0	0.0	0.7	2.1	6.4	£19,552	
E00075526	Patchway: E00075526	12.2	36.0	3.9	82.6	8.3	8.3	2.5	91.7	2.5	0.8	0.0	0.0	2.5	5.8	£31,867	
E00075528	Patchway: E00075528	14.4	39.0	5.4	88.0	4.3	6.8	1.7	90.6	6.0	0.0	0.0	0.0	1.7	7.7	£31,764	
E00075529	Patchway: E00075529	12.9	34.0	6.3	53.5	32.3	12.3	0.6	87.7	9.0	0.0	0.0	0.0	2.6	9.7	£26,081	
E00075531	Patchway: E00075531	35.0	34.0	3.1	12.2	75.6	5.7	4.1	28.8	56.7	0.0	0.0	0.8	1.6	71.5	£9,778	
E00075532	Patchway: E00075532	9.0	34.0	3.4	79.5	1.6	18.0	4.1	88.5	4.1	0.0	0.8	0.0	2.5	9.0	£29,628	
E00075533	Patchway: E00075533	16.0	41.5	0.5	69.4	15.3	14.4	2.7	88.3	6.3	0.0	0.0	0.0	2.7	9.0	£38,562	
E00075534	Patchway: E00075534	12.7	37.0	3.2	85.2	2.6	11.3	2.6	89.6	6.1	0.9	0.0	0.0	0.6	9.6	£32,679	
E00075536	Patchway: E00075536	18.7	42.0	4.2	71.9	5.6	18.4	1.9	88.1	3.1	0.6	0.0	0.0	3.8	8.1	£26,418	
E00075537	Patchway: E00075537	10.2	36.5	4.8	90.6	3.1	5.5	2.3	89.8	3.9	1.6	0.8	0.8	0.8	9.4	£33,904	
E00075538	Patchway: E00075538	12.2	37.0	4.8	78.5	3.0	18.5	4.4	92.6	0.7	0.0	0.7	0.7	0.7	6.7	£29,998	
E00075539	Patchway: E00075539	13.0	41.0	3.8	73.4	23.8	3.8	1.4	90.2	7.7	0.0	0.0	0.0	0.7	9.1	£27,648	
E00075540	Patchway: E00075540	6.7	30.0	3.5	69.2	13.0	16.6	1.8	84.6	5.9	0.0	0.6	0.6	4.5	8.9	£31,693	
E00075541	Patchway: E00075541	16.6	41.5	4.2	76.9	9.8	11.2	1.4	93.0	5.6	0.0	0.0	0.0	0.0	7.0	£28,063	
E00075542	Patchway: E00075542	16.3	33.0	5.5	60.2	3.4	34.7	5.9	76.3	11.0	0.0	0.0	2.5	4.2	19.5	£27,538	
E00075543	Patchway: E00075543	16.7	38.0	2.6	71.9	14.0	13.2	0.8	90.9	3.3	0.8	0.0	0.8	3.3	5.8	£32,233	
E00075544	Patchway: E00075544	12.3	40.0	0.5	71.2	13.6	15.3	4.2	55.9	34.7	0.8	0.0	0.8	3.4	40.7	£30,390	
E00075545	Patchway: E00075545	9.8	33.0	2.9	66.4	27.4	5.3	2.7	73.5	19.5	0.0	0.0	0.9	3.5	23.0	£25,204	
E00075547	Pilning and Severn Beach: E00075547	8.9	38.0	1.8	86.0	1.5	12.5	0.7	83.1	5.1	7.4	1.5	0.0	2.2	14.7	£42,472	
E00075548	Pilning and Severn Beach: E00075548	13.1	35.0	5.4	56.3	2.2	40.7	5.9	60.7	28.9	3.7	0.0	0.7	0.0	39.3	£33,785	
E00075549	Pilning and Severn Beach: E00075549	14.1	37.0	4.4	81.7	0.0	16.7	0.8	84.9	2.4	8.7	1.6	0.0	1.6	13.5	£38,901	
E00075550	Pilning and Severn Beach: E00075550	13.3	42.0	2.5	82.5	2.1	15.4	5.6	19.6	0.7	56.6	3.5	1.4	12.6	67.8	£32,485	
E00075551	Pilning and Severn Beach: E00075551	18.4	41.0	4.8	81.7	9.2	5.6	4.2	49.0	6.3	40.1	3.5	0.0	2.8	54.2	£29,648	
E00075552	Pilning and Severn Beach: E00075552	17.9	40.0	3.2	88.1	2.4	9.5	2.4	69.0	7.1	9.5	3.2	0.8	7.9	23.0	£29,308	
E00075553	Pilning and Severn Beach: E00075553	37.5	58.0	3.1	85.5	8.6	5.3	3.3	89.5	3.3	1.3	1.3	0.7	0.7	9.9	£22,600	
E00075554	Pilning and Severn Beach: E00075554	6.2	33.0	4.1	75.3	3.2	21.4	8.4	63.6	18.8	1.3	3.2	0.6	3.9	32.5	£35,156	
E00075555	Pilning and Severn Beach: E00075555	12.3	41.0	3.3	81.6	4.4	12.5	1.5	74.3	13.2	4.4	0.7	2.9	2.9	22.8	£33,025	
E00075556	Pilning and Severn Beach: E00075556	21.5	45.0	3.6	89.6	3.0	6.0	0.7	67.2	7.5	15.7	3.0	0.7	5.2	27.6	£24,881	
E00075557	Pilning and Severn Beach: E00075557	17.9	47.0	2.0	72.4	20.3	5.7	4.9	64.2	23.6	3.3	1.6	2.8	1.6	34.1	£25,941	
E00075558	Rodway: E00075558	20.3	42.0	3.6	70.3	18.1	10.9	1.4	94.2	2.2	0.0	0.0	0.0	2.2	3.6	£23,676	
E00075559	Rodway: E00075559	24.4	42.0	4.5	49.6	41.9	7.8	0.8	96.1	0.8	0.0	0.0	0.8	1.6	2.3	£18,985	
E00075560	Rodway: E00075560	14.7	40.0	1.5	88.0	2.1	9.2	1.4	91.5	2.1	1.4	0.0	0.0	3.5	4.9	£35,607	
E00075561	Rodway: E00075561	11.5	41.0	3.5	88.9	5.6	5.6	0.8	94.4	1.6	0.0	0.8	0.0	2.4	3.2	£29,751	
E00075562	Rodway: E00075562	15.3	38.0	3.3	67.7	20.8	9.2	0.8	94.6	1.5	0.8	0.0	0.0	2.3	3.1	£25,905	
E00075563	Rodway: E00075563	12.6	36.0	3.8	51.8	33.3	9.2	1.4	80.9	15.6	0.0	0.0	0.0	2.1	17.0	£18,835	
E00075564	Rodway: E00075564	19.6	44.5	3.2	77.7	12.3	9.2	0.8	95.4	0.0	0.8	0.8	1.5	0.8	3.8	£26,569	
E00075565	Rodway: E00075565	28.1	45.0	2.7	53.5	34.9	8.5	1.6	83.7	3.1	0.0	0.0	7.0	4.7	11.6	£18,480	
E00075566	Rodway: E00075566	14.4	35.5	2.7	70.8	8.4	18.8	1.9	90.3	3.9	0.6	1.3	0.0	1.9	7.8	£32,894	
E00075567	Rodway: E00075567	15.8	40.5	3.1	65.3	6.3	25.7	2.1	88.9	4.2	1.4	0.0	0.0	3.5	7.6	£30,234	
E00075568	Rodway: E00075568	19.4	36.5	4.2	62.6	26.7	10.7	0.8	93.9	1.5	0.0	0.0	0.8	3.1	3.1	£19,903	
E00075569	Rodway: E00075569	19.9	41.0	5.1	60.2	31.3	7.8	0.0	93.8	3.9	0.8	0.0	0.0	1.6	4.7	£22,953	
E00075570	Rodway: E00075570	22.3	44.0	2.0	87.7	4.1	7.0	0.6	91.2	2.9	2.3	0.0	0.0	2.9	5.8	£34,548	
E00075571	Rodway: E00075571	24.0	40.0	4.7	23.9	74.3	2.1	0.7	89.3	7.1	0.0	0.0	2.1	0.7	10.0	£10,952	
E00075572	Rodway: E00075572	23.6	45.5	0.9	92.6	1.5	5.9	1.5	88.9	4.4	1.5	0.7	0.7	2.2	8.9	£25,332	
E00075573	Rodway: E00075573	26.7	50.0	2.2	86.0	0.0	3.2	0.0	96.0	1.6	0.8	0.8	0.0	0.8	3.2	£29,835	
E00075574	Rodway: E00075574	24.7	45.0	5.0	93.2	1.6	7.2	1.6	89.6	4.0	0.0	1.6	1.6	1.6	8.8	£26,683	
E00075575	Rodway: E00075575	29.3	47.0	6.8	69.8	17.5	9.5	4.0	89.7	4.0	0.0	0.8	0.0	1.6	8.7	£25,883	
E00075576	Rodway: E00075576	25.3	45.0	2.1	87.3	2.4	8.7	1.6	86.5	4.0	0.0	0.8	1.6	5.6	7.9	£27,933	
E00075577	Rodway: E00075577	24.2	45.0	4.3	89.2	2.3	5.5	1.6	92.2	0.8	0.0	0.8	0.8	3.9	3.9	£25,354	
E00075578	Rodway: E00075578	16.5	42.0	5.0	89.5	1.5	8.3	0.0	92.5	2.3	0.0	0.0	1.5	3.8	3.8	£33,018	
E00075579	Rodway: E00075579	25.0	46.0	1.7	90.6	0.8	7.0	1.6	93.0	0.8	0.8	0.8	0.0	3.1	3.9	£24,895	
E00075580	Rodway: E00075580	25.6	44.0	2.6	93.7	1.4	4.9	0.7	95.8	1.4	0.0	0.0	0.7	1.4	2.8	£24,613	
E00075581	Rodway: E00075581	19.8	41.0	1.2	93.8	1.5	3.8	0.8	92.3	3.1	0.0	2.3	0.0	1.5	6.2	£27,533	
E00075582	Rodway: E00075582	20.3	45.0	1.7	94.4	0.0	4.8	3.2	91.2	0.0	0.0	0.0	2.4	1.6	7.2	£34,245	
E00075583	Rodway: E00075583	21.4	40.0	2.2	86.6	3.1	9.4	2.4	87.7	7.9	0.8	0.8	0.0	1.6	11.8	£25,316	
E00075584	Rodway: E00075584	28.0	48.0	6.2	70.0	22.2	4.2	0.8	84.2	8.3	0.0	0.8	0.8	0.8	10.8	£20,067	
E00075585	Rodway: E00075585	16.0	38.5	2.6	89.8	1.5	6.9	0.8	93.1	1.5	0.8	0.0	2.9	1.5	5.3	£29,496	
E00075588	Rodway: E00075588	17.8	43.0	1.8	90.7	2.4	7.9	1.6	88.1	3.2	3.2	1.5	0.8	1.6	10.3	£36,744	
E00075627	Rodway: E00075627	33.0	48.0	2.1	89.8	2.4	4.7	0.0	96.9	0.8	0.8	0.0	0.8	2.4	21.843		
E00075628	Rodway: E00075628	14.1	38.0	5.3	45.6	46.5	7.0	0.0	92.1	1.8	0.0	0.9	0.9	4.4	3.5	£19,917	
E00075632	Rodway: E00075632	15.7	38.0	2.1	80.3	0.6	18.5	0.0	93.6	2.5	0.0	0.6	0.6	2.5	3.8	£40,382	
E00075633	Rodway: E00075633	22.5	44.0	2.0	54.3	1.3	4.4	0.6	94.3	2.5	0.0	0.0	0.6	1.9	3.8	£28,746	
E00075589	Severn: E00075589	12.4	41.0	1.8	75.6	3.8	17.9	6.4	20.5	1.3	47.4	3.5	5.1	15.4	64.1	£40,933	
E00075590	Severn: E00075590	24.2	47.0	0.9	84.6	1.7	13.7	3.4	13.7	8.5	58.1	4.3	0.9	11.1	75.2	£42,332	
E00075591	Severn: E00075591	12.0	39.0	0.0	40.5	2.4	54.8	4.8	7.1	7.1	57.1	7.1	0.0	16.7	76.2	£38,902	
E00075592	Severn: E00075592	16.4	45.0	1.8	71.8	4.9	22.7	5.5	17.2	9.8	49.1	2.5	5.5	10.4	72.4	£31,254	
E00075593	Severn: E00075593	26.2	52.0	2.3	93.8	0.0	7.5	2.7	17.0	7.5	51.0	4.1	1.4	16.3	66.7	£37,422	
E00075594																	

Code	Name	Population characteristics			Household characteristics - Tenure			Household characteristics - Central Heating								Household Income	
		Lowest	Highest	Lowest	Lowest	Highest	Lowest	Lowest	Highest	Lowest	Highest	Lowest	Highest	Lowest	Highest	Lowest	Highest
		% Age 65 +	Median Age	% Unemployed	% Owner Occupied	% Socially rented	% Private rented	% No central heating	% Gas central heating	% Electric central heating	% Oil central heating	% Solid fuel central heating	% Other central heating	% 2 or more types of central heating	% 'off gas' areas	Median Household Income (£)	
E00075154	Stoke Gifford: E00075154	9.3	42.0	3.6	91.5	1.2	7.3	0.0	98.8	0.0	0.0	0.0	0.0	1.2	0.0	£47,876	
E00075155	Stoke Gifford: E00075155	6.0	41.0	1.8	97.1	0.0	2.9	0.0	98.1	0.0	0.0	0.0	1.0	1.0	0.0	£55,075	
E00075157	Stoke Gifford: E00075157	5.9	35.0	2.2	82.5	0.7	16.1	0.0	96.5	0.0	0.0	0.0	0.7	2.8	0.7	£42,675	
E00075673	Stoke Gifford: E00075673	10.5	38.0	4.1	64.9	11.7	22.7	0.6	84.4	14.3	0.0	0.0	0.0	0.6	14.9	£36,585	
E00075674	Stoke Gifford: E00075674	8.1	37.0	2.1	81.3	0.0	18.8	0.0	94.8	4.2	0.0	0.0	0.0	1.0	4.2	£45,111	
E00075675	Stoke Gifford: E00075675	15.7	46.0	2.7	89.6	0.6	9.7	0.6	97.4	1.3	0.0	0.0	0.0	0.6	1.9	£40,966	
E00075676	Stoke Gifford: E00075676	9.0	40.0	2.6	83.2	1.3	14.2	5.8	88.4	5.2	0.0	0.0	0.0	0.6	11.0	£35,565	
E00075677	Stoke Gifford: E00075677	10.0	37.0	1.0	79.4	0.9	17.8	0.0	94.4	1.9	0.0	0.0	0.5	2.8	2.8	£38,536	
E00075678	Stoke Gifford: E00075678	3.8	34.0	2.1	82.0	1.1	13.5	0.0	95.5	1.1	1.1	0.0	1.1	1.1	3.4	£43,959	
E00075679	Stoke Gifford: E00075679	19.6	46.0	0.4	87.4	1.4	9.8	0.7	97.2	0.0	0.0	0.0	0.0	2.1	0.7	£34,239	
E00075680	Stoke Gifford: E00075680	14.7	41.0	1.5	84.3	1.6	14.2	3.9	89.0	5.5	0.0	0.0	0.8	0.8	10.2	£30,902	
E00075681	Stoke Gifford: E00075681	7.9	37.0	1.1	87.5	1.6	10.9	0.8	94.5	1.6	1.6	0.0	0.0	1.6	3.9	£38,858	
E00075682	Stoke Gifford: E00075682	16.5	36.0	2.2	62.8	21.7	11.6	0.8	87.6	7.0	0.0	3.6	0.8	2.3	10.1	£28,485	
E00075683	Stoke Gifford: E00075683	12.5	34.0	1.8	71.9	0.7	27.4	0.7	89.5	4.4	0.0	0.0	0.7	4.4	5.9	£32,242	
E00075684	Stoke Gifford: E00075684	8.6	37.0	2.2	83.1	1.5	14.7	2.9	89.7	2.2	1.5	0.0	0.7	2.9	7.4	£44,923	
E00075685	Stoke Gifford: E00075685	21.0	46.0	2.2	88.3	3.1	6.3	0.0	92.2	3.1	3.1	0.0	0.0	0.8	7.0	£37,042	
E00075686	Stoke Gifford: E00075686	17.4	46.0	4.3	88.4	1.7	5.8	0.0	96.7	0.0	1.7	0.0	0.8	0.8	2.5	£38,156	
E00075687	Stoke Gifford: E00075687	11.5	35.0	3.4	63.2	0.8	35.3	4.0	84.8	7.2	0.0	0.0	0.8	3.2	12.0	£40,671	
E00075688	Stoke Gifford: E00075688	24.7	45.5	4.3	90.4	3.5	1.7	0.0	93.9	0.9	4.3	0.0	0.0	0.0	5.2	£48,793	
E00075693	Stoke Gifford: E00075693	12.3	35.0	1.7	88.5	1.6	9.8	0.0	95.1	1.6	0.0	0.0	0.0	3.3	1.6	£34,660	
E00075694	Stoke Gifford: E00075694	17.4	40.0	3.8	48.3	38.1	11.0	1.7	69.5	22.9	0.8	0.0	1.7	3.4	27.1	£21,288	
E00075695	Stoke Gifford: E00075695	10.5	39.0	3.4	93.7	0.0	6.3	2.7	91.9	0.9	0.0	0.9	0.0	3.6	4.5	£38,976	
E00075696	Stoke Gifford: E00075696	12.1	36.0	3.1	89.8	1.6	8.7	2.4	92.1	3.1	0.0	0.0	0.0	2.4	5.5	£31,249	
E00075697	Stoke Gifford: E00075697	19.1	42.0	3.5	86.0	5.0	8.3	2.5	90.1	2.5	0.0	0.0	0.0	5.0	5.0	£27,653	
E00075698	Stoke Gifford: E00075698	13.2	39.0	2.2	84.9	3.3	10.5	2.0	95.4	1.3	0.0	0.0	0.0	1.3	3.3	£42,824	
E00075699	Stoke Gifford: E00075699	12.9	34.0	6.4	50.0	43.8	5.5	2.1	90.4	4.8	0.0	0.0	0.0	2.7	6.8	£20,805	
E00075700	Stoke Gifford: E00075700	5.2	33.0	1.3	82.2	1.7	15.3	5.1	88.1	5.9	0.0	0.0	0.0	0.8	11.0	£39,120	
E00075701	Stoke Gifford: E00075701	16.0	37.0	1.9	68.1	17.2	12.9	3.4	73.3	19.8	0.0	0.0	0.9	2.6	24.1	£26,563	
E00075702	Stoke Gifford: E00075702	15.2	40.0	2.9	64.2	20.1	14.9	1.5	92.5	2.2	0.0	0.0	0.7	3.0	4.5	£25,558	
E00075703	Stoke Gifford: E00075703	30.5	47.0	10.7	9.5	84.5	5.2	0.9	50.0	47.4	0.0	0.0	0.0	0.9	49.1	£15,821	
E00075704	Stoke Gifford: E00075704	18.4	35.0	5.6	47.8	39.8	10.6	5.3	84.1	4.4	0.0	0.0	0.0	6.2	9.7	£19,338	
E00075705	Stoke Gifford: E00075705	21.4	42.5	5.7	86.7	4.2	8.3	4.2	91.7	2.5	0.0	0.0	0.0	1.7	6.7	£27,396	
E00075706	Stoke Gifford: E00075706	12.3	44.0	1.5	95.3	0.8	3.9	0.0	94.5	0.8	2.4	0.0	0.8	1.6	3.9	£48,313	
E00075707	Stoke Gifford: E00075707	19.3	43.5	3.7	75.8	18.3	5.8	1.7	95.0	0.0	0.0	0.0	0.0	3.3	1.7	£23,270	
E00075708	Stoke Gifford: E00075708	2.6	37.0	1.3	85.2	2.5	12.3	0.0	94.3	2.5	0.0	0.0	0.0	2.5	3.3	£53,650	
E00173068	Stoke Gifford: E00173068	1.3	30.5	3.2	50.4	18.6	30.1	0.0	95.6	1.8	0.0	0.0	0.9	1.8	2.7	£40,394	
E00173086	Stoke Gifford: E00173086	6.0	34.0	3.1	80.6	7.4	10.2	0.0	91.7	1.9	1.9	0.9	0.9	2.8	5.6	£42,616	
E00173088	Stoke Gifford: E00173088	2.1	31.0	3.1	55.5	18.2	25.5	0.0	93.6	0.0	1.8	0.0	0.9	3.6	2.7	£39,304	
E00075711	Thornbury North: E00075711	15.5	45.0	2.2	84.3	0.8	15.0	3.1	92.1	1.6	0.8	0.0	0.8	1.6	6.3	£40,174	
E00075712	Thornbury North: E00075712	23.8	54.0	0.5	84.5	1.4	12.7	3.5	88.0	4.2	2.1	0.0	0.0	2.1	9.9	£37,931	
E00075713	Thornbury North: E00075713	14.1	46.0	3.1	89.5	0.8	8.9	1.6	92.7	1.6	1.6	0.0	0.0	2.4	4.8	£49,398	
E00075714	Thornbury North: E00075714	25.8	51.0	1.0	85.8	0.0	9.4	3.8	14.2	2.8	58.5	2.8	1.9	16.0	69.8	£36,922	
E00075715	Thornbury North: E00075715	9.9	40.5	0.9	89.7	1.6	6.3	0.0	92.9	0.0	0.8	0.0	0.8	5.6	1.6	£38,454	
E00075716	Thornbury North: E00075716	48.9	64.0	2.0	51.4	39.4	8.3	0.9	67.9	26.8	0.0	0.0	0.0	4.6	27.5	£19,050	
E00075717	Thornbury North: E00075717	32.6	51.0	3.0	90.1	1.7	6.6	0.0	90.1	5.8	1.7	0.0	0.8	1.7	8.3	£35,774	
E00075718	Thornbury North: E00075718	24.2	56.0	2.5	84.4	0.8	13.3	7.8	82.8	7.8	0.0	0.0	0.8	0.8	16.4	£39,284	
E00075719	Thornbury North: E00075719	18.8	40.0	4.4	85.2	0.8	14.1	0.0	96.9	2.3	0.0	0.0	0.0	0.8	2.3	£39,595	
E00075720	Thornbury North: E00075720	14.9	42.0	2.4	85.2	0.0	14.8	4.1	82.8	9.8	0.8	0.0	0.0	2.5	14.8	£38,093	
E00075721	Thornbury North: E00075721	23.6	52.0	0.9	82.5	0.8	16.7	0.0	92.1	3.2	0.8	0.8	0.0	3.2	4.8	£46,579	
E00075722	Thornbury North: E00075722	32.7	52.0	2.6	94.2	0.0	5.0	0.0	92.8	2.2	0.0	0.7	0.0	4.3	2.9	£36,052	
E00075723	Thornbury North: E00075723	24.1	47.0	2.8	90.3	0.7	8.2	0.7	91.0	3.7	1.5	0.0	0.7	2.2	6.7	£33,883	
E00075724	Thornbury North: E00075724	24.0	42.0	2.9	46.6	44.3	8.4	5.3	68.7	22.1	1.5	0.0	1.5	0.8	30.5	£17,049	
E00075725	Thornbury North: E00075725	10.4	34.0	5.1	48.9	40.6	9.0	0.8	86.5	3.8	3.0	0.8	0.8	4.5	9.0	£17,688	
E00075726	Thornbury North: E00075726	22.8	45.0	1.6	75.0	0.0	21.2	7.1	80.1	3.2	3.2	0.0	0.0	6.4	13.5	£31,461	
E00075727	Thornbury North: E00075727	16.8	43.0	0.7	86.2	0.7	11.0	0.7	78.6	0.7	13.1	0.0	0.7	6.2	15.2	£42,388	
E00075728	Thornbury North: E00075728	24.2	45.5	1.3	99.9	1.6	1.6	1.6	86.9	1.6	2.5	0.0	0.8	6.6	6.6	£35,204	
E00075729	Thornbury North: E00075729	34.9	49.0	1.2	85.0	1.3	13.7	0.0	81.7	14.4	0.7	0.7	0.0	2.6	4.7	£29,841	
E00075730	Thornbury North: E00075730	22.8	43.0	1.3	94.3	0.0	5.7	0.0	91.9	3.3	0.8	0.0	0.0	4.1	15.1	£35,158	
E00075731	Thornbury North: E00075731	26.2	50.0	1.0	99.9	0.8	2.7	3.3	81.0	6.6	10.0	0.8	0.0	6.8	10.7	£31,358	
E00075732	Thornbury North: E00075732	29.1	52.0	4.3	89.8	2.2	8.0	4.4	83.9	6.6	0.0	0.0	0.7	3.6	12.4	£33,529	
E00075733	Thornbury North: E00075733	29.9	46.5	0.7	35.5	38.7	19.4	0.0	57.3	40.3	0.0	0.0	0.8	1.6	11.1	£21,119	
E00075740	Thornbury North: E00075740	22.4	46.0	0.8	92.1	0.0	7.2	1.4	91.4	3.6	0.7	0.0	0.0	2.9	5.8	£30,380	
E00075742	Thornbury North: E00075742	41.7	56.0	3.3	38.8	49.6	7.9	3.6	54.0	37.4	2.9	0.0	1.4	0.7	45.3	£11,621	
E00075101	Thornbury South and Alveston: E00075101	39.2	59.0	1.5	97.6	0.0	2.4	0.0	85.5	0.0	8.3	0.0	0.0	5.6	8.9	£41,461	
E00075102	Thornbury South and Alveston: E00075102	26.6	52.0	2.2	85.5	8.9	4.0	0.0	78.2	11.3	2.4	0.8	0.0	7.3	14.5	£35,384	
E00075103	Thornbury South and Alveston: E00075103	15.8	49.0	1.6	65.4	10.0	20.0	2.3	28.5	7.7	40.8	3.1	2.3	15.4	56.2	£37,005	
E00075104	Thornbury South and Alveston: E00075104	31.5	54.0	2.6	86.9	0.7	11.7	1.5	83.9	5.1	2.2	0.7	0.0	6.6	9.5	£35,804	
E00075105	Thornbury South and Alveston: E00075105	28.0	45.0	2.8	45.3	46.0	6.0	0.7	64.0	27.3	3.3	0.7	1.3	2.7	33.3	£19,336	
E00075106	Thornbury South and Alveston: E00075106	32.1	51.0	1.0	95.0	0.0	3.4	2.5	79.0	2.5	5.9	1.7	2.5	5.9	15.1	£35,913	
E00075107	Thornbury South and Alveston: E00075107	32.2	54.0	4.0	92.9												

		Population characteristics			Household characteristics - Tenure			Household characteristics - Central Heating								Household Income	
Code	Name	Lowest	Highest	Lowest	Lowest	Highest	Lowest	Lowest	Highest	Lowest	Highest	Lowest	Highest	Lowest	Highest	Lowest	Highest
		% Age 65 +	Median Age	% Unemployed	% Owner Occupied	% Socially rented	% Private rented	% No central heating	% Gas central heating	% Electric central heating	% Oil central heating	% Solid fuel central heating	% Other central heating	% 2 or more types of central heating	% 'off gas' areas	Median Household Income (£)	
E00075794	Woodstock: E00075794	16.0	38.0	6.7	69.5	7.3	19.2	5.3	78.8	9.9	0.0	1.3	0.7	4.0	17.2	E27,330	
E00075795	Woodstock: E00075795	36.0	51.0	1.6	88.3	6.3	4.7	2.3	87.5	5.5	0.0	0.0	0.0	4.7	7.8	E29,471	
E00075796	Woodstock: E00075796	19.2	42.0	2.8	88.0	13.6	4.8	2.0	93.2	2.0	0.0	0.0	0.0	2.7	4.1	E28,429	
E00075797	Woodstock: E00075797	20.0	44.0	4.5	58.4	29.6	8.0	0.0	94.4	1.6	0.8	0.0	0.0	3.2	2.4	E22,281	
E00075798	Woodstock: E00075798	9.7	35.0	3.2	81.3	8.4	9.6	0.0	94.0	1.8	0.0	1.2	0.0	3.0	3.0	E34,173	
E00075799	Woodstock: E00075799	13.0	42.0	3.6	61.7	25.8	10.9	1.6	78.9	16.4	0.0	0.0	0.8	2.3	18.8	E28,973	
E00075800	Woodstock: E00075800	21.1	42.0	2.5	72.5	8.1	18.8	2.0	94.0	3.4	0.0	0.0	0.0	0.7	5.4	E22,177	
E00075801	Woodstock: E00075801	5.0	33.0	2.1	81.4	11.4	5.7	0.0	95.7	1.4	0.7	0.7	0.7	0.7	3.6	E34,939	
E00075802	Woodstock: E00075802	32.1	50.0	2.2	48.1	36.4	12.4	2.3	77.5	5.4	2.3	0.0	10.4	2.3	20.2	E16,609	
E00075803	Woodstock: E00075803	22.5	45.0	1.6	99.9	1.5	6.6	0.0	97.1	1.5	0.7	0.0	0.0	0.7	2.2	E26,199	
E00075804	Woodstock: E00075804	7.1	37.0	3.8	85.0	8.3	6.8	0.0	96.2	0.0	0.0	0.0	0.8	3.0	0.8	E31,330	
E00075805	Woodstock: E00075805	14.3	39.0	5.4	68.6	17.5	13.1	0.7	87.6	8.0	1.5	0.0	0.0	2.2	10.2	E32,546	
E00075806	Woodstock: E00075806	11.5	35.0	6.6	74.7	2.7	22.0	3.3	88.7	4.7	0.0	0.0	1.3	2.0	9.3	E30,526	
E00075807	Woodstock: E00075807	5.0	31.0	1.8	72.8	8.6	17.3	4.3	83.3	7.4	0.0	0.6	1.2	3.1	13.6	E24,048	
E00075808	Woodstock: E00075808	11.1	38.0	2.7	90.8	2.1	7.1	3.5	90.8	1.4	0.0	0.0	0.0	4.3	5.0	E37,705	
E00075809	Woodstock: E00075809	22.3	44.5	2.9	92.5	3.3	3.3	0.8	94.2	0.8	0.0	0.8	0.0	3.3	2.5	E35,060	
E00075810	Woodstock: E00075810	18.6	41.0	2.4	91.5	0.8	5.9	0.8	90.7	2.5	0.8	0.8	0.0	4.2	5.1	E31,932	
E00075811	Woodstock: E00075811	18.6	45.0	3.3	83.2	12.0	4.8	0.0	95.2	0.8	0.0	0.0	0.8	3.2	1.6	E31,939	
E00075813	Woodstock: E00075813	20.2	41.0	6.4	64.9	27.2	7.9	0.7	80.8	11.9	0.0	0.0	0.7	6.0	13.2	E32,940	
E00075814	Woodstock: E00075814	14.9	34.0	6.6	37.9	34.6	23.5	2.0	73.9	19.0	0.0	1.3	2.0	2.0	24.2	E21,553	
E00075815	Woodstock: E00075815	7.2	31.0	4.1	47.4	19.1	30.9	2.2	91.3	2.2	0.0	0.0	0.0	4.3	4.3	E29,103	
E00075816	Woodstock: E00075816	18.1	41.0	2.4	72.0	17.5	9.8	0.0	93.7	1.4	1.4	0.0	0.7	2.8	3.5	E27,917	
E00075817	Woodstock: E00075817	13.2	33.0	5.9	55.5	13.0	31.5	2.1	81.5	15.1	0.0	0.0	1.4	0.0	18.5	E27,209	
E00075818	Woodstock: E00075818	18.8	39.0	3.0	59.2	10.3	30.5	0.4	62.8	34.1	0.4	0.0	0.0	2.2	35.0	E33,080	
E00075819	Woodstock: E00075819	19.9	42.0	2.0	88.2	0.8	9.2	2.5	89.1	4.2	0.0	0.8	0.8	2.5	8.4	E25,605	
E00075820	Woodstock: E00075820	14.8	30.5	4.2	40.8	46.9	6.9	1.5	76.9	16.9	0.0	0.8	0.0	3.8	19.2	E16,911	
E00075822	Woodstock: E00075822	23.4	48.0	2.5	81.3	2.2	16.5	0.0	97.1	0.0	0.0	0.0	0.0	2.9	0.0	E28,416	
E00075823	Woodstock: E00075823	13.1	38.0	3.8	80.7	6.7	12.6	2.2	95.6	2.2	0.0	0.0	0.0	0.0	4.4	E32,556	
E00075824	Woodstock: E00075824	14.3	36.0	1.8	65.9	3.2	29.4	0.0	90.5	3.2	0.8	0.0	0.0	5.6	4.0	E27,065	
E00075825	Woodstock: E00075825	23.1	45.0	3.8	87.5	2.1	10.4	0.7	90.3	4.2	1.4	0.7	0.7	2.1	7.6	E29,933	
E00075826	Woodstock: E00075826	11.8	34.5	2.9	82.2	1.4	16.4	2.1	89.7	2.1	2.1	0.0	0.7	3.4	6.8	E30,972	
E00173061	Woodstock: E00173061	5.7	29.0	5.5	51.8	19.1	28.4	4.3	76.6	15.6	0.0	0.0	0.7	2.8	20.6	E22,331	
E00173063	Woodstock: E00173063	8.2	29.0	3.8	73.0	5.7	21.3	0.7	73.0	23.4	0.0	0.0	2.1	0.7	26.2	E27,480	
E00075828	Yate Central: E00075828	21.2	45.0	4.8	72.5	18.1	7.2	0.7	88.4	8.7	0.0	0.0	0.0	2.2	9.4	E26,962	
E00075829	Yate Central: E00075829	10.1	36.5	3.4	50.4	40.7	6.2	2.7	87.6	5.3	0.9	0.0	0.0	3.5	8.8	E24,233	
E00075830	Yate Central: E00075830	30.1	49.0	1.5	86.3	7.3	5.6	1.6	89.5	8.1	0.0	0.0	0.0	0.8	9.7	E24,355	
E00075831	Yate Central: E00075831	21.5	44.0	0.4	94.4	1.6	4.0	2.4	93.6	0.8	0.8	0.0	0.0	2.4	4.0	E29,389	
E00075832	Yate Central: E00075832	47.8	64.0	1.8	54.3	35.3	6.0	0.0	56.0	43.1	0.0	0.0	0.9	0.0	44.0	E13,948	
E00075833	Yate Central: E00075833	43.4	60.0	4.1	51.9	35.7	12.4	0.0	79.1	12.4	0.8	1.6	5.4	0.8	20.2	E17,496	
E00075834	Yate Central: E00075834	8.5	43.0	3.0	96.5	0.0	3.5	0.0	97.2	1.4	0.0	0.0	1.4	1.4	4.0	E40,620	
E00075835	Yate Central: E00075835	26.1	43.5	1.4	86.0	0.8	13.2	0.8	91.5	3.1	0.8	1.6	0.0	2.3	6.2	E26,769	
E00075836	Yate Central: E00075836	26.4	51.0	1.7	95.4	0.0	4.6	0.0	90.8	2.3	2.3	1.5	0.0	3.1	6.2	E27,939	
E00075837	Yate Central: E00075837	20.5	43.0	2.5	82.9	0.7	15.1	0.7	93.8	3.4	0.0	0.7	0.0	1.4	4.8	E25,588	
E00075838	Yate Central: E00075838	13.2	35.5	2.3	84.1	2.4	11.9	1.6	94.4	0.8	0.0	0.0	0.0	3.2	2.4	E28,379	
E00075839	Yate Central: E00075839	22.2	39.0	3.3	85.7	5.3	9.0	0.0	82.7	6.8	7.5	0.0	0.0	3.0	14.3	E22,217	
E00075840	Yate Central: E00075840	15.9	37.0	2.2	87.2	0.8	12.0	3.2	93.6	2.4	0.0	0.0	0.0	0.8	5.6	E27,449	
E00075841	Yate Central: E00075841	13.7	38.0	3.5	84.2	2.5	12.5	0.8	92.5	2.5	0.8	0.8	0.0	2.5	5.0	E31,689	
E00075843	Yate Central: E00075843	45.9	64.0	2.2	94.7	0.0	4.6	0.0	97.7	0.8	0.8	0.0	0.0	0.8	1.5	E20,963	
E00075844	Yate Central: E00075844	15.6	35.0	2.9	86.2	0.8	12.3	0.0	85.4	7.7	2.3	0.0	1.5	3.1	11.5	E32,089	
E00075847	Yate Central: E00075847	21.2	42.0	3.5	87.6	0.0	11.5	1.8	87.6	8.0	0.0	1.8	0.0	0.9	11.5	E26,543	
E00075848	Yate Central: E00075848	18.0	44.0	2.7	72.2	3.0	23.3	6.0	63.2	26.3	1.5	0.0	0.0	3.0	33.8	E29,838	
E00075849	Yate Central: E00075849	11.7	41.0	1.1	78.8	6.8	13.7	3.4	84.2	5.5	0.7	1.4	0.0	4.8	11.0	E32,919	
E00075852	Yate Central: E00075852	10.0	39.0	3.4	71.9	27.1	1.0	0.0	95.8	1.0	0.0	0.0	1.0	2.1	2.1	E32,746	
E00075853	Yate Central: E00075853	25.4	48.0	1.9	75.6	18.1	3.9	0.0	95.3	3.1	0.0	0.0	0.0	1.6	3.1	E25,652	
E00075854	Yate Central: E00075854	22.5	41.0	7.1	45.9	47.1	5.9	0.0	81.2	15.3	1.2	0.0	0.0	2.4	16.5	E14,615	
E00075855	Yate Central: E00075855	25.2	48.0	2.2	79.3	0.0	19.8	0.0	95.5	1.8	1.8	0.0	0.0	0.9	3.6	E37,579	
E00075856	Yate Central: E00075856	14.0	43.0	0.9	73.7	2.6	21.9	2.6	86.0	11.4	0.0	0.0	0.0	0.0	14.0	E32,056	
E00075857	Yate Central: E00075857	30.6	46.0	2.9	92.4	2.9	4.8	0.0	76.2	7.6	13.3	3.0	0.0	1.9	21.9	E34,941	
E00075871	Yate Central: E00075871	17.8	40.0	3.1	78.0	18.9	3.3	0.8	94.9	1.6	1.6	0.0	0.0	1.6	4.1	E25,240	
E00075872	Yate Central: E00075872	15.4	44.0	2.1	89.8	2.6	5.9	1.3	92.1	1.8	0.7	0.0	2.0	2.6	5.3	E38,281	
E00075850	Yate North: E00075850	8.7	39.0	2.2	78.6	0.7	20.7	1.4	82.1	15.7	0.0	0.0	0.0	0.7	17.1	E46,692	
E00075851	Yate North: E00075851	18.1	42.0	3.0	82.3	1.2	15.9	0.0	93.3	3.0	0.0	0.0	0.6	3.0	7.7	E49,094	
E00075858	Yate North: E00075858	23.9	48.0	2.3	72.1	0.0	24.6	5.6	33.0	45.9	16.4	1.5	0.0	6.6	30.5	E36,467	
E00075859	Yate North: E00075859	5.1	38.0	1.3	79.7	1.6	18.7	0.0	98.4	0.8	0.0	0.0	0.0	0.8	0.8	E44,092	
E00075860	Yate North: E00075860	8.3	37.0	2.3	84.8	1.0	14.3	0.0	95.2	1.9	0.0	0.0	0.0	2.9	1.9	E43,581	
E00075861	Yate North: E00075861	4.8	33.0	1.8	54.7	1.4	43.2	3.4	60.1	33.1	1.4	0.0	0.0	2.0	37.8	E38,268	
E00075862	Yate North: E00075862	9.6	41.0	1.2	94.1	0.0	4.6	1.3	96.7	0.7	0.0	0.0	0.0	1.3	2.0	E52,120	
E00075863	Yate North: E00075863	8.9	45.0	2.1	97.1	0.0	2.9	0.0	99.0	0.0	0.0	0.0	0.0	1.0	0.0	E52,697	
E00075864	Yate North: E00075864	12.0	44.5	0.8	96.5	0.0	3.5	0.0	98.3	0.0	0.9	0.0	0.0	0.9	0.9	E57,242	
E00075865	Yate North: E00075865	13.0	39.0	1.3	94.7	0.0	5.3	0.0	96.5	0.9	0.9	0.0	0.0	1.8	1.8	E45,042	
E00075866	Yate North: E00075866	17.6	48.0	1.9	96.6	0.8	2.5	0.0	95.8	3.4	0.0	0.0	0.0	0.8	3.4	E49,166	
E00075867	Yate North: E00075867	22.3	45.0	1.6	94.8	1.0	2.1	0.0	100.0	0.0	0.0	0.0	0.0	0.0	0.0	E31,706	
E00075868	Yate North: E00075868	23.5	50.0	2.4	97.6	0.0	2.4	0.8	98.4	0.8	0.0						